



Apartment Three-bedroom (4+kk)

Rented

156 m², Praha 6, Bubeneč, Gotthardská





Apartment Three-bedroom (4+kk)

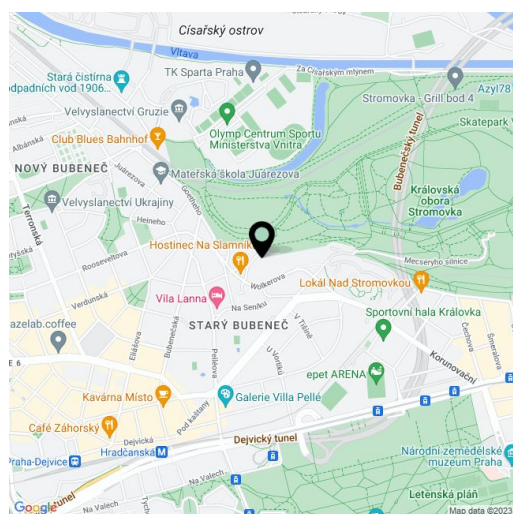
Rented156 m², Praha 6, Bubeneč, Gotthardská

Total area	156 m ²
Parking	Parking available at CZK 2,500/month.
Cellar	-
PENB	F
Reference number	10627
Available from	Immediately

Greatly benefiting from the location right next to the Stromovka Park, this is a fully newly renovated, fully air-conditioned 3-bedroom 3-bathroom split-level attic apartment with park views, on the fourth floor of a completely refurbished 19th century building with a new lift. Located in a quiet cul-de-sac in the prestigious embassy district of Bubeneč, a few min. walk to a bus stop, and a short walk to Hradčanská and Dejvická metro stations with full amenities in the immediate vicinity. Conveniently located for the international schools in Prague 6 and the airport.

The lower level features a living room with a dining area and a fully fitted open plan kitchen, 2 bedrooms with en-suite bathrooms (bathtub / walk-in shower, toilet, bidet shower), an additional separate toilet with a bidet shower, and an entrance hall. The upper floor includes a 3rd bedroom, a shower room with a toilet and a bidet shower, and a utility room.

Park views, solid wood parquet floors, tiles, security entry door, washing machine, dishwasher, induction cooktop, microwave oven, gas boiler, satellite reception. The apartment can be fully furnished at a higher rent. Deposit for service charges and water: CZK 3,000/month. Electricity and gas will be transferred to the tenant.



* Area of the unit according to the Civil Code. The area consists of the sum total area of the entire unit bounded by perimeter walls.



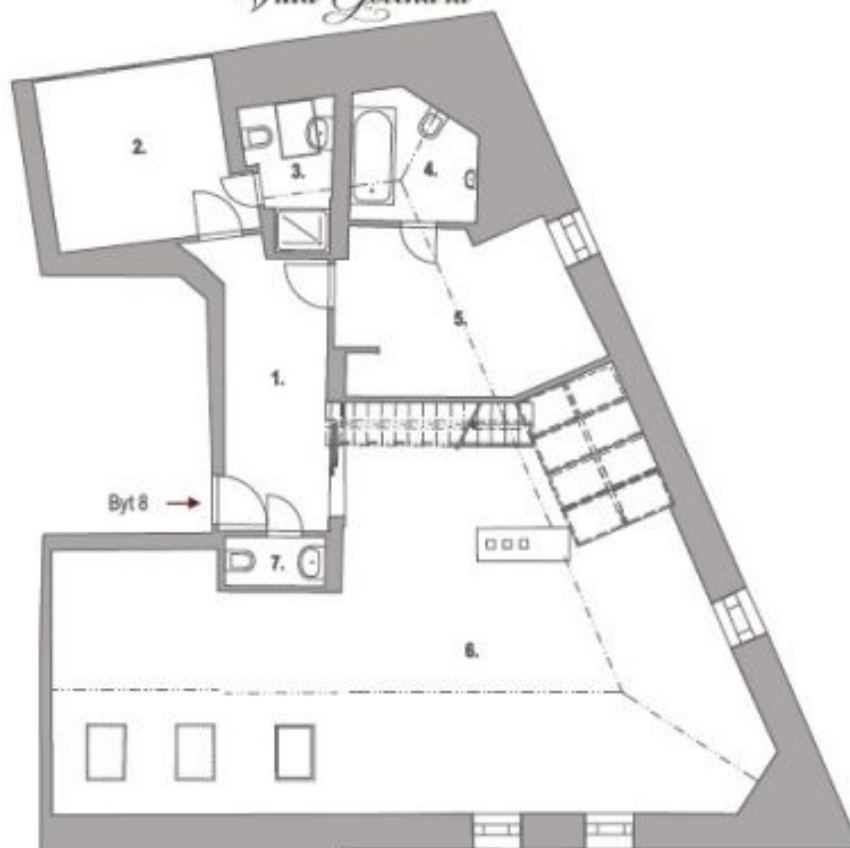
Apartment Three-bedroom (4+kk)

156 m², Praha 6, Bubeneč, Gotthardská

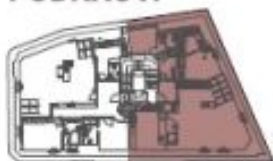
Rented



Villa Gellhard



PODKROVÍ



BYT 8a 4+kk



Byt 8a	6.NP
1. chodba	9,8 m ²
2. pokoj	9,7 m ²
3. koupelna	4,0 m ²
4. koupelna	4,8 m ²
5. pokoj	13,0 m ²
6. obýv.pokoj s jídelnou	73,3 m ²
7. WC	1,6 m ²
Celková užitná plocha bytu	146,7 m²
Celková podlahová plocha	155,7 m²



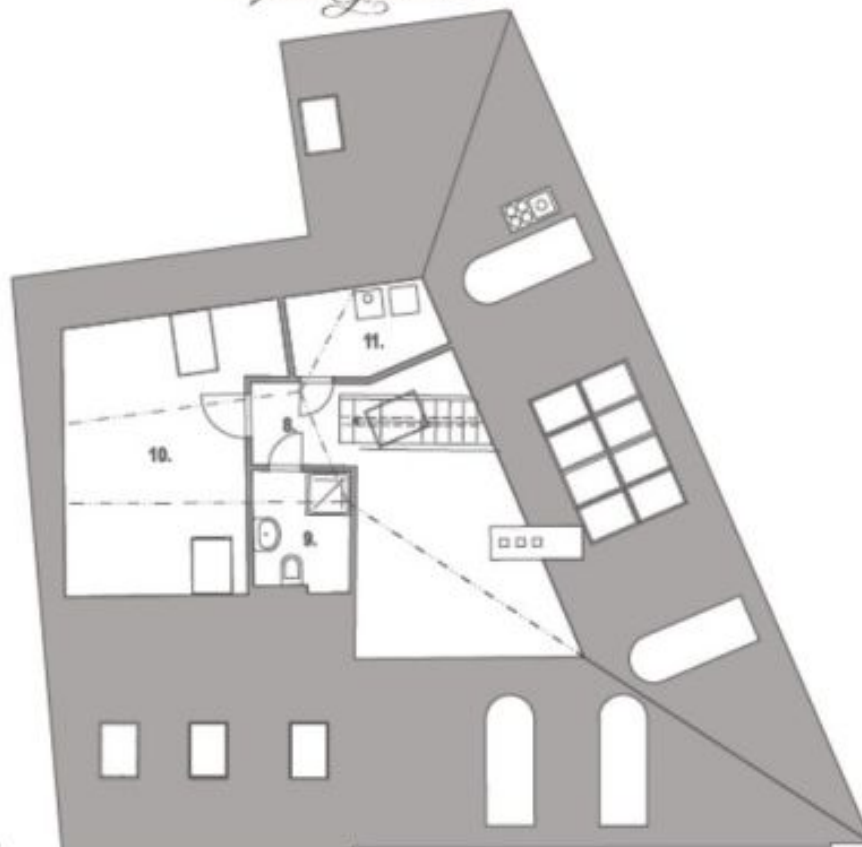
Apartment Three-bedroom (4+kk)

Rented

156 m², Praha 6, Bubeneč, Gotthardská



Villa Gotthard



GALERIE



BYT 8b 4+kk



Byt 8b	podkroví
8. chodba	4,3 m ²
9. koupelna	3,1 m ²
10. pokoj	18,8 m ²
11. komora	4,3 m ²
Celková užitná plocha bytu	146,7 m²
Celková podlahová plocha	155,7 m²