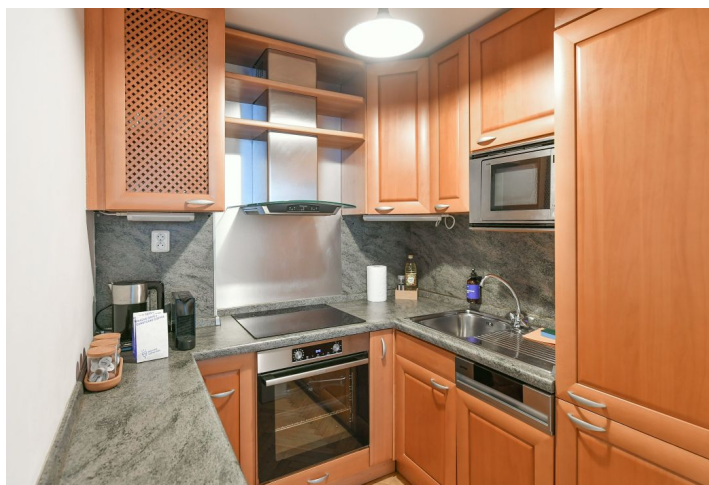
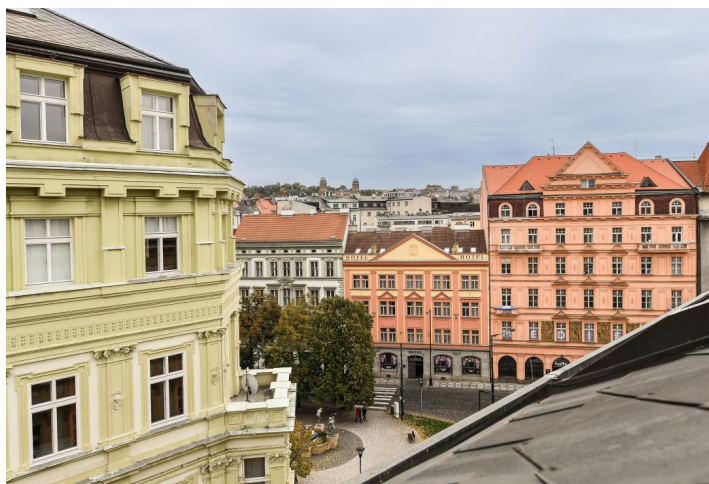




Apartment One-bedroom (2+1)

€ 423 092 | CZK 10 700 000

47 m², Praha 1, Nové Město, Senovážné náměstí





Apartment One-bedroom (2+1)

€ 423 092 | CZK 10 700 000

47 m², Praha 1, Nové Město, Senovážné náměstí

Total area	47 m ²
Parking	-
Cellar	Yes
PENB	G
Reference number	106298

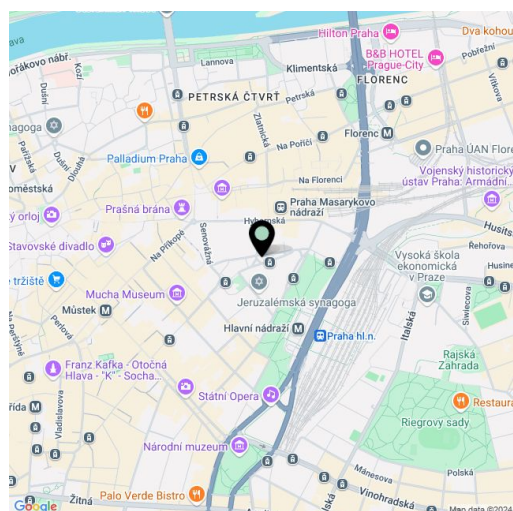
The apartment on the top floor of a very well-maintained historic apartment building in the very center of the metropolis in New Town, near the square with a park and close to Masaryk and the Main Train Stations.

The practical layout of the 4th floor apartment consists of a living room, a separate kitchen, 1 bedroom, a bathroom (bathtub, toilet, sink, washing machine) and an anteroom. The windows of the apartment are south-facing towards the square with a nice park landscaping and a fountain with a sculpture of Czech musicians.

Facilities include **wooden windows**, **refurbished parquet floors** and tiles. Heating is provided by a central boiler, the apartment has a portable air conditioner. The building has well-maintained common areas and a **modern elevator**.

The location allows for **excellent accessibility**, either by metro, tram or train. The neighborhood is full of restaurants, cafes, shops, services and cultural institutions, and the **Old Town** and **Wenceslas Squares** as well as the **Republic Square** are within walking distance.

Floor area 47.1 m², cellar 3.27 m².



* Size of the unit according to the Housing Act.
The area consists of the sum total of the internal area of every room.