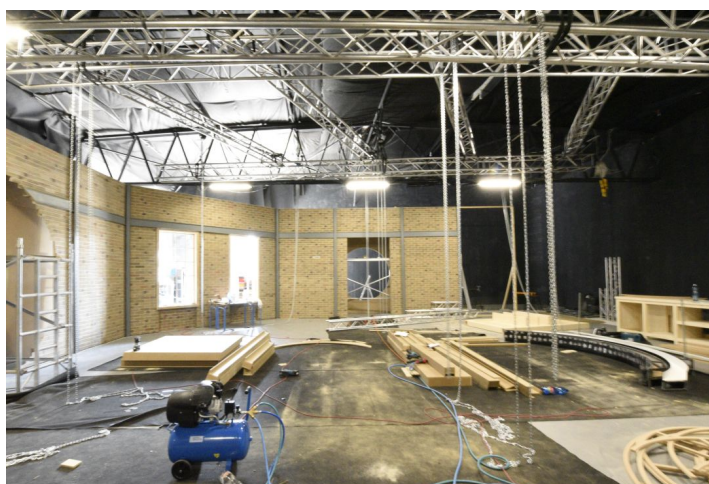
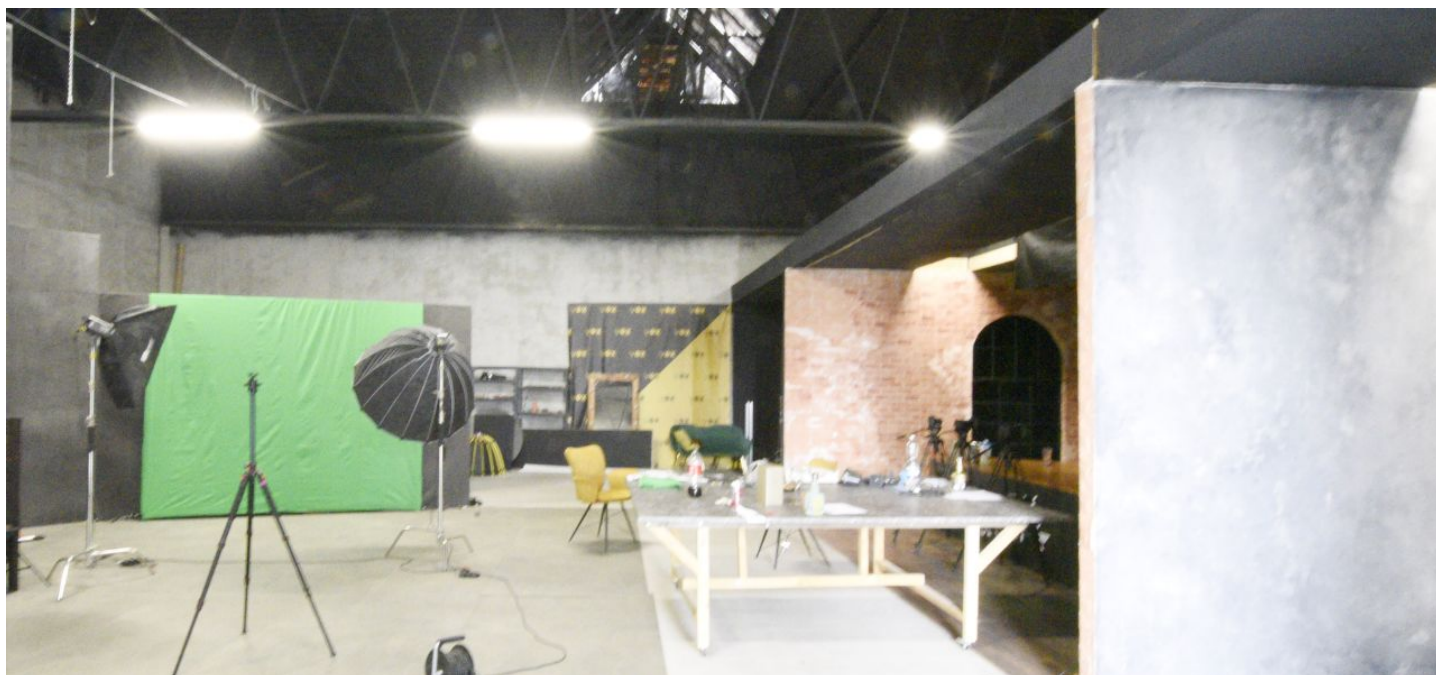




# Logistic park

961 m<sup>2</sup>, Praha-východ, Klecany, Dolní Kasárna

Ask for price





## Logistic park

961 m<sup>2</sup>, Praha-východ, Klecany, Dolní Kasárna

**Ask for price**

|                         |                               |
|-------------------------|-------------------------------|
| Total area              | 961 m <sup>2</sup>            |
| Available area for rent | 961 m <sup>2</sup>            |
| Ceiling height          | —                             |
| Floor loading capacity  | —                             |
| Column grid structure   | —                             |
| Structure               | Reinforced concrete structure |
| PENB                    | G                             |
| Reference number        | 106302                        |

Production and logistics complex offers for rent warehouse, production, office space and outdoor areas in Klecany near D8. There is a hall A with an area of 430 sq.m, hall B with an area of 234 sq.m, facilities including offices with an area of 297 sq.m and 2 paved areas with an area of 13,000 sq.m and 15,000 sq.m, which are suitable for parking, outdoor storage or placement of containers. The halls are currently used as studios for filming. The offered premises can be used for light production and storage.

### Location:

The premises are on the site of the former barracks in Klecany and are located 2.5 km from Exit 1 on the D8 motorway.

### Facilities and services:

- Sufficient parking area.

### Storage/production space:

- Floor loading capacity 5,5 t/sq.m





| Výrobně logistický areál Klecany |  |                       |     |  |  |
|----------------------------------|--|-----------------------|-----|--|--|
| Místnost, hala                   |  | Výměra m <sup>2</sup> |     |  |  |
| 2 Chodba                         |  | 11.419                |     |  |  |
| 3 Chodba                         |  | 23.789                |     |  |  |
| 3 Chodba                         |  | 10.245                |     |  |  |
| 4 Vstup                          |  | 6.509                 |     |  |  |
| 5 Sklad techniky                 |  | 19.099                |     |  |  |
| 6 Kancelář                       |  | 14.603                |     |  |  |
| 7 Kuchyň                         |  | 14.751                |     |  |  |
| 7 Fundus + maskérna              |  | 21.78                 |     |  |  |
| 7 Jidelna + catering             |  | 51.78                 |     |  |  |
| 8 Denní místnost - zázemí        |  | 30.007                |     |  |  |
| 9 Pokoj                          |  | 14.751                |     |  |  |
| 9 Pokoj                          |  | 14.751                |     |  |  |
| 10 WC                            |  | 6.875                 |     |  |  |
| 11 Sprcha                        |  | 3.96                  |     |  |  |
| 12 Zvuková režie                 |  | 19.21                 |     |  |  |
| 13 Nahrávání                     |  | 23.676                |     |  |  |
| 14 Sklad                         |  | 10.245                |     |  |  |
| <b>Celkem</b>                    |  | <b>297.45</b>         |     |  |  |
| 1 Hala A                         |  | 430                   |     |  |  |
| Hala B                           |  | 234                   |     |  |  |
| Fundus a maskérna 2              |  | 15.9                  |     |  |  |
| Sklad techniky 2                 |  | 18                    | cca |  |  |
| Propojovací tubus do zázemí      |  | 18                    | cca |  |  |
| <b>celkem</b>                    |  | <b>715.9</b>          |     |  |  |