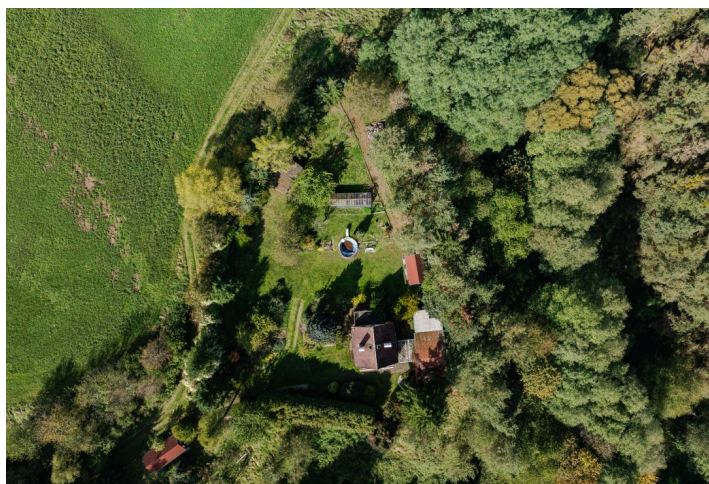




Land

9 175 m², Příbram, Kamýk nad Vltavou

€ 512 719 | CZK 13 000 000





Land

9 175 m², Příbram, Kamýk nad Vltavou

€ 512 719 | CZK 13 000 000

Price per sq. m.	1 417 CZK
Total area	9 175 m ²
Land type	Housing
Reference number	106308

This vast plot of land, surrounded by forests and meadows, is situated in a secluded place above the village of Kamýk nad Vltavou. The plot on which the cottage with its own sauna and garden gazebo is located is intended for recreational purposes and after the approval of the authorities, other recreational facilities can only be added to it.

A cottage protected by a remote-controlled **alarm**, a **garden gazebo**, and a greenhouse stand on a slightly sloping plot of land, in the lower part of which flows a **stream**. The land has a septic tank, a **water well**, and a municipal water supply is at its border. It is surrounded only by forests and meadows, around which the **asphalt road** leads to Kamýk nad Vltavou.

According to the zoning plan, the **plot is used for recreation** and, after approval by the building authority, or hydrologist, it is possible to divide it and **implement the construction** of other **recreational facilities**, including new access roads, sumps and drilled wells.

The Benešovská highlands, a tourist-attractive area between the **Slapy and Orlík** dams on the border of the Sedlčany and Příbram regions, is an ideal place for camping, cycling, or wandering along the hiking trails winding through the wooded landscape. A new recreational **port for small vessels** is being built in **Kamýk nad Vltavou**, about 40 minutes away from Prague by car. The nearby **Zduchovice equestrian resort** has several riding areas and is one of the leading organizers of races in the Czech Republic. Celebrations are held every year at the nearby **ruins of Vrškamýk**, and the nearby **Hříměždice quarry**, which is also a beautiful place for swimming, hosts the **World High Jump Championship** every summer.

Total area 9,175 m².

