



Logistic park

2 860 m², Plzeň-město, Plzeň, Železniční

Ask for price





Logistic park

2 860 m², Plzeň-město, Plzeň, Železniční

Ask for price

Total area	2 860 m ²
Available area for rent	2 860 m ²
Ceiling height	10 m
Floor loading capacity	—
Column grid structure	—
Structure	Reinforced concrete structure
PENB	B
Reference number	106389

The renovated former industrial site offers 2,860 sq.m of space for lease for up to 5 individual tenants. The main part consists of office building A with a dominant lobby, which is connected to a large warehouse hall B, which is connected to a smaller hall C. The premises are suitable for warehousing or commercial activities.

Location:

The premises are located in the Pilsen-Slovany district, close to the Pilsen main railway station and close to the main roads to Prague, Karlovy Vary, České Budějovice and Germany.

Production/warehouse premises:

- Clear height 6 m

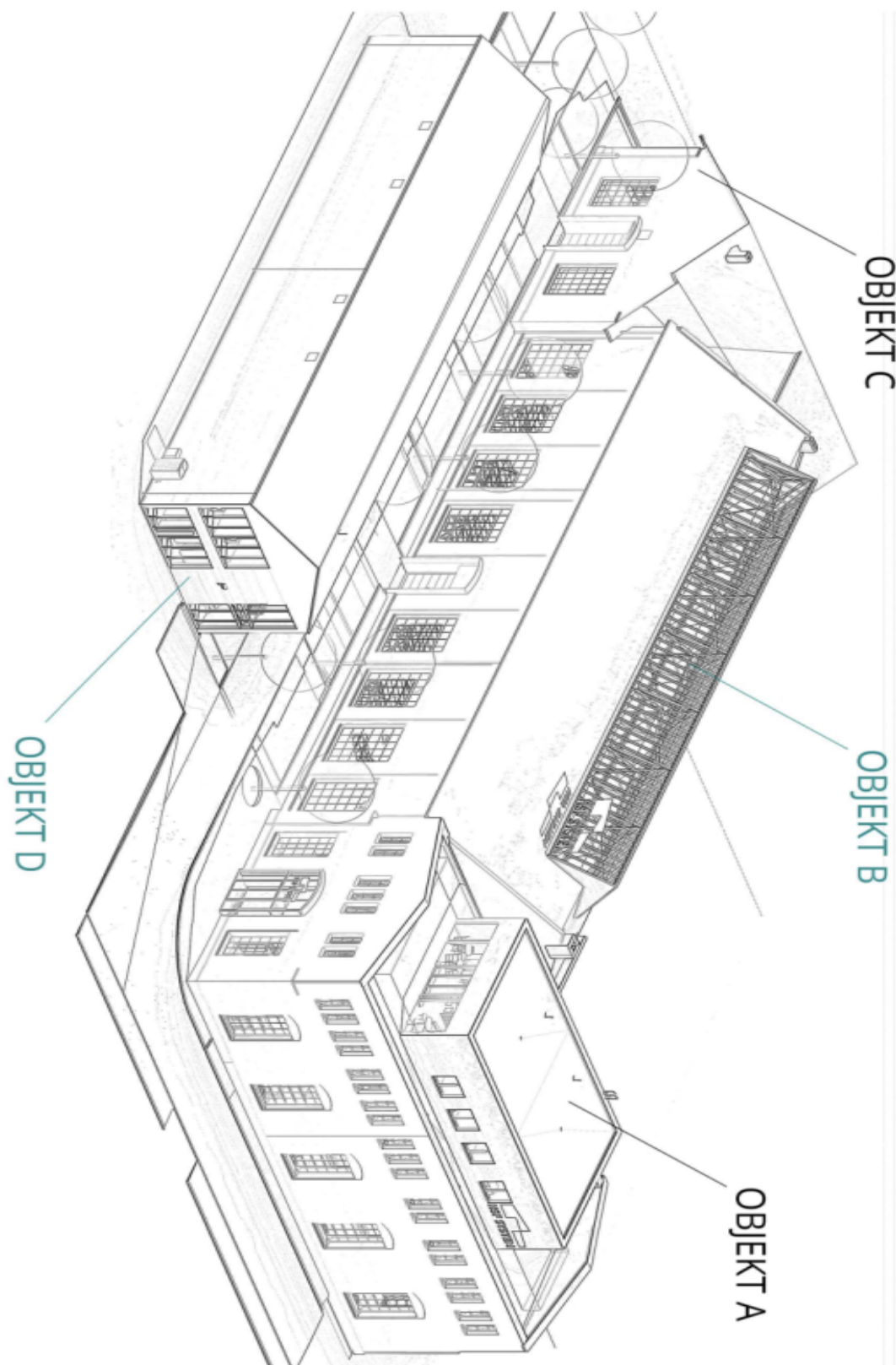
Tenant does not pay commission.



Logistic park

2 860 m², Plzeň-město, Plzeň, Železniční

Ask for price

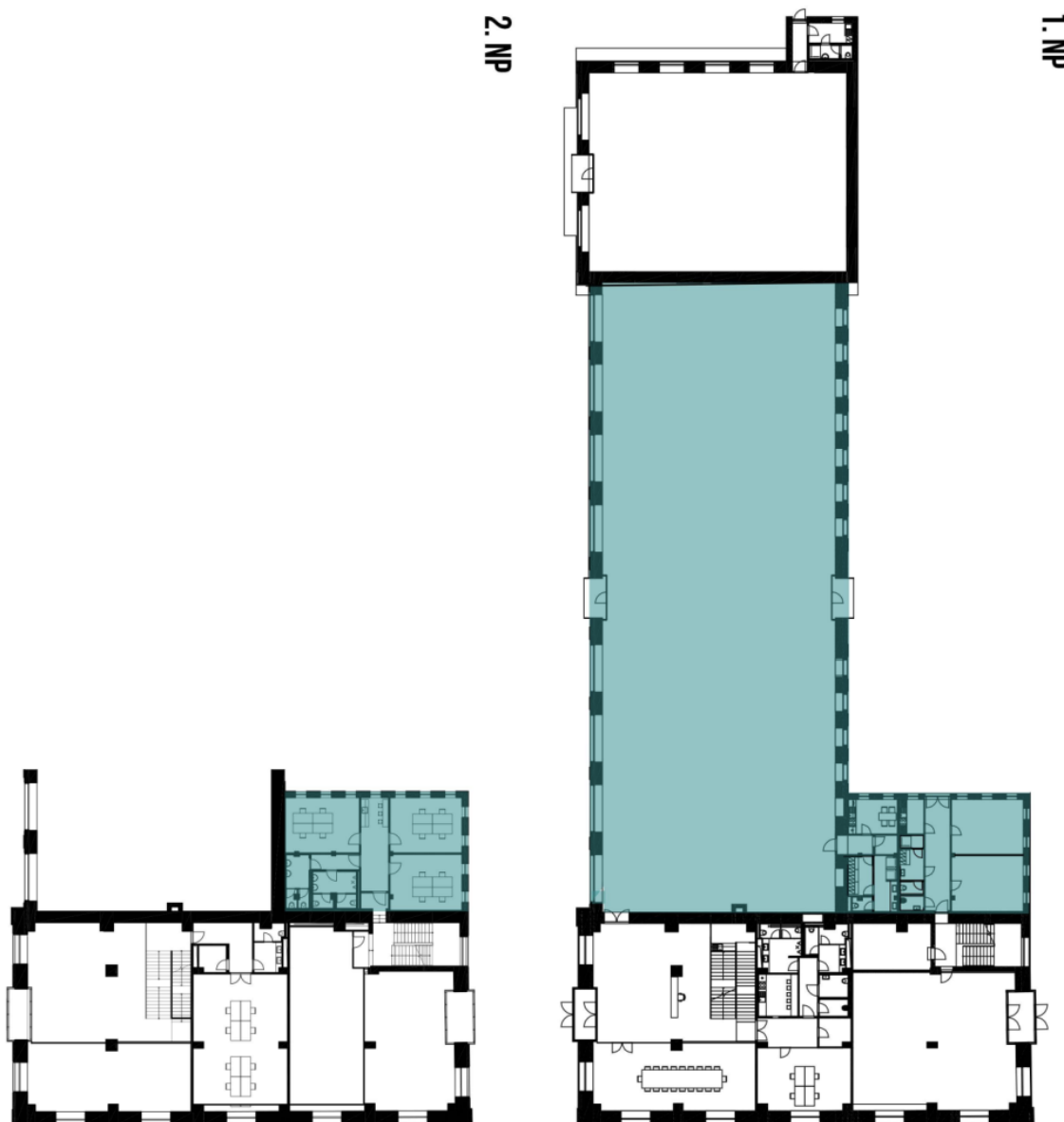




Logistic park

2 860 m², Plzeň-město, Plzeň, Železniční

Ask for price





Logistic park

2 860 m², Plzeň-město, Plzeň, Železniční

Ask for price

