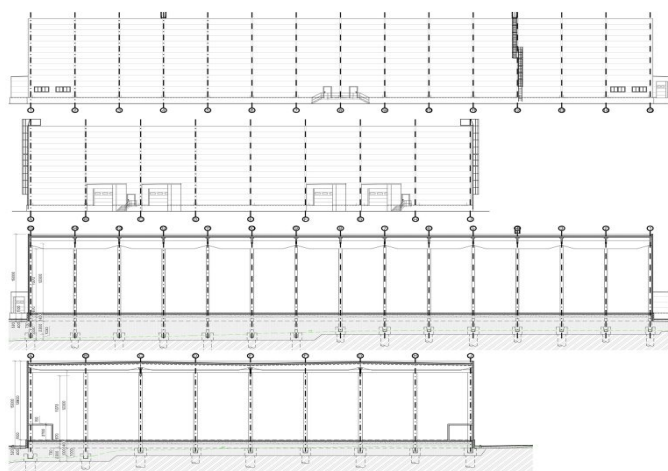




Warehouse space

€ 6.80 - 9.00 / m² | CZK 172 - 228 / m²

5 000 m², Třebíč, Kožichovice, Žďárského





Warehouse space

€ 6.80 - 9.00 / m² | CZK 172 - 228 / m²

5 000 m², Třebíč, Kožichovice, Žďárského

Service price	1 EUR monthly per m ²
Total area	5 000 m ²
Available area for rent	5 000 m ²
Min. area	1 200 m ²
Ceiling height	12 m
Floor loading capacity	5 t/m ²
Column grid structure	—
Structure	Reinforced concrete structure
PENB	B
Reference number	106410

5,000 sq.m. of warehouse, industrial, office space and social facilities in the area located in the industrial zone in the southern part of the city of Třebíč in the locality of Kožichovice. The hall has a total of 7 hydraulic ramps and the area can be divided into up to 4 separate storage or production units. It is possible to place administrative and social annexes in the hall according to the tenant's requirements.

Location:

The park is located approximately 20 km from D1 Exit 141 and Exit 146 near the town of Náchod and 20 km from the planned D11 motorway. The area is part of an industrial zone located outside the city. Excellent accessibility for employees by train and bus.

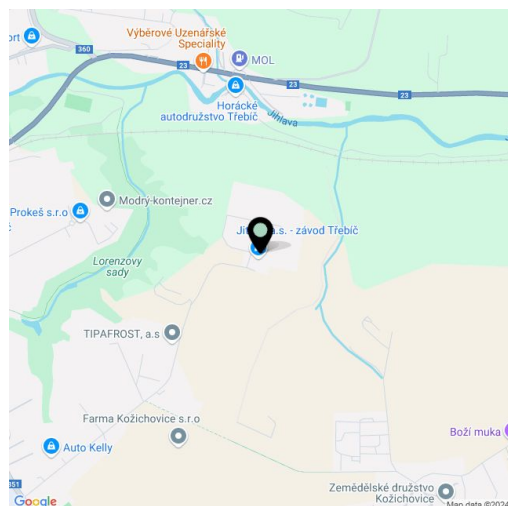
Facilities and services:

- the area is fully fenced and guarded
- the premises are accessible 24/7
- utilities - sewerage, water supply, electric network 230 V/ 400 V, heating system
- sufficient capacity of the electricity network
- outdoor handling areas for unloading and loading

Industrial/warehouse space:

- 4 separate units - each 1,200 sq.m. industrial, warehouse space + 50 sq.m. background
- 7 hydraulic ramps
- ceiling clearance of 12 m
- floor load capacity 5 t/sq.m.
- sanitary and office facilities

The tenant does not pay commission.

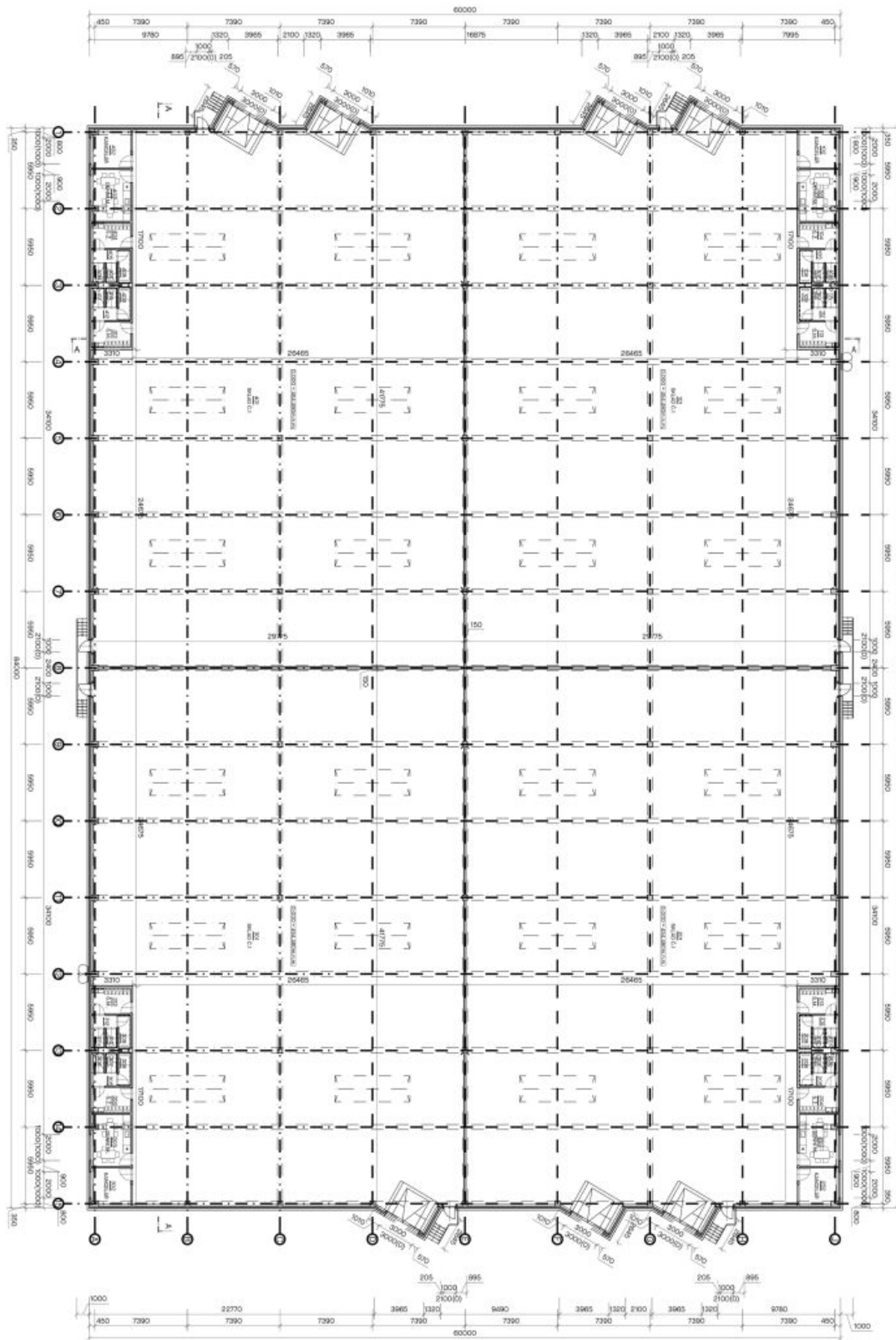




Warehouse space

€ 6.80 - 9.00 / m² | CZK 172 - 228 / m²

5 000 m², Třebíč, Kožichovice, Žďárského





Warehouse space

€ 6.80 - 9.00 / m² | CZK 172 - 228 / m²

5 000 m², Třebíč, Kožichovice, Žďárského

