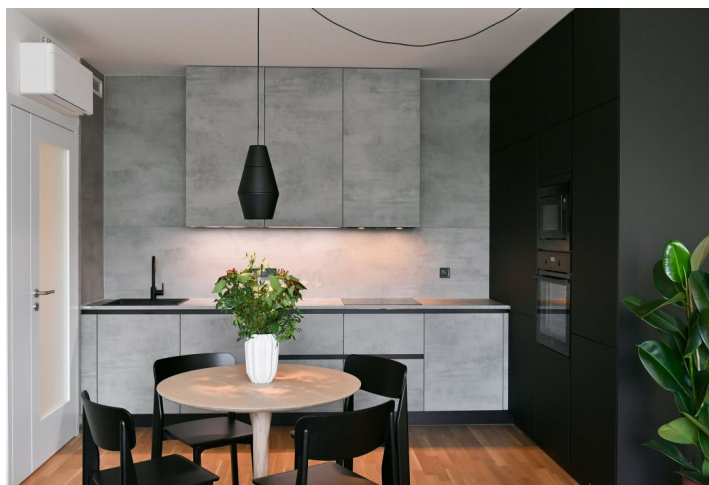
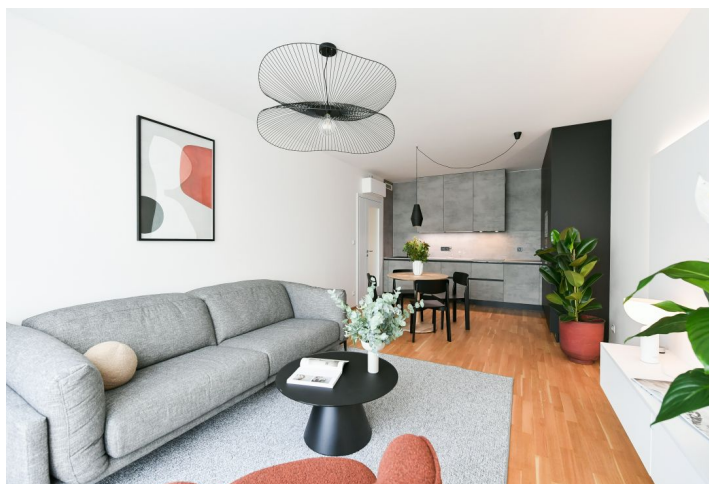




Apartment Two-bedroom (3+kk)

€ 2 080 | CZK 52 250

87.1 m², Prague 5, Smíchov, Albrightové





Apartment Two-bedroom (3+kk)

€ 2 080 | CZK 52 250

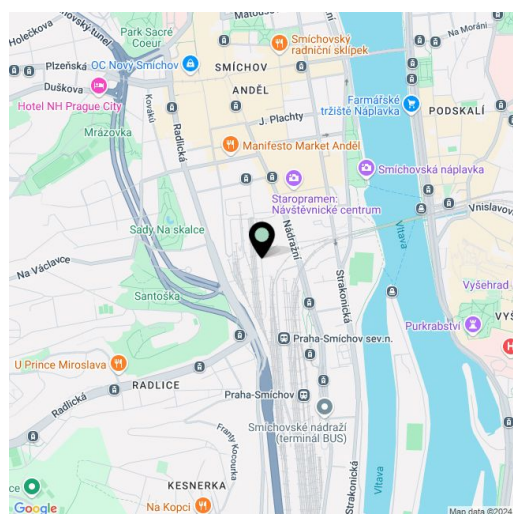
87.1 m², Prague 5, Smíchov, Albrightové

Total area	107 m ²
Floor area*	87 m ²
Terrace	20 m ²
Parking	Garage parking.
Garage	Yes
Cellar	5 m ²
Service price	Monthly deposit for services, water, and heating: CZK 6,500 for one person, extra person CZK 800. Electricity is billed separately.
PENB	B
Reference number	106422
Available from	Immediately

This brand-new fully furnished apartment with 2 terraces is situated on the 5th floor in the Smíchov City residence - a new building with an elevator and parking. Located close to the Anděl commercial center in Smíchov, in a newly arising district with a pedestrian zone, with great accessibility by metro and tram, and easy reach of the French School, the Smíchov and Výtoň embankments, several sports grounds, rich amenities and services, the Anděl metro station, and the Na Knížecí bus terminal.

The interior features a living room with a fully fitted open plan kitchen and shared **terrace**, a master bedroom with a fitted **walk-in closet** and **terrace** facing the quiet courtyard, a bedroom with built-in wardrobes and access to the shared terrace, a bathroom (bathtub), a separate toilet, and an entrance hall with built-in wardrobes.

Air-conditioning, heat recovery ventilation, hardwood floors, tiles, French windows, central heating, dishwasher, induction cooktop, microwave oven, cellar. A garage parking space is included.



* Area of the unit according to the Civil Code. The area consists of the sum total area of the entire unit bounded by perimeter walls.