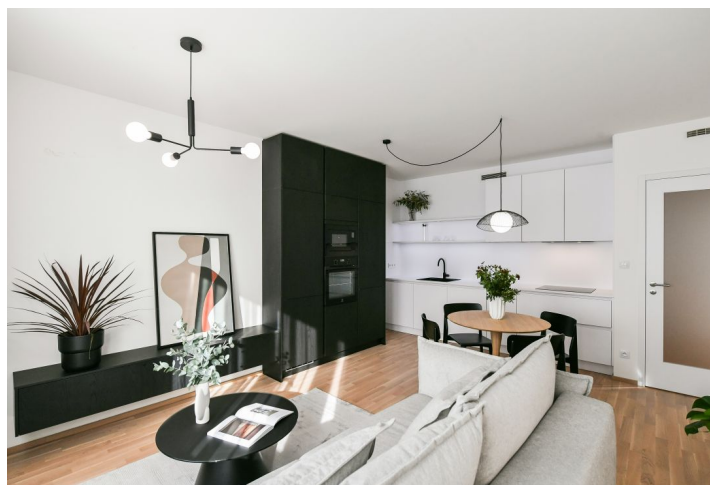
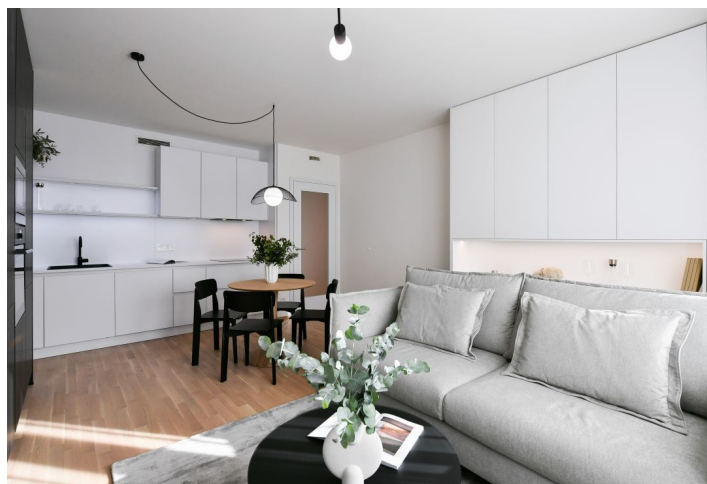




Apartment One-bedroom (2+kk)

€ 1 430 | CZK 36 136

62.3 m², Prague 5, Smíchov, Albrightové





Apartment One-bedroom (2+kk)

€ 1 430 | CZK 36 136

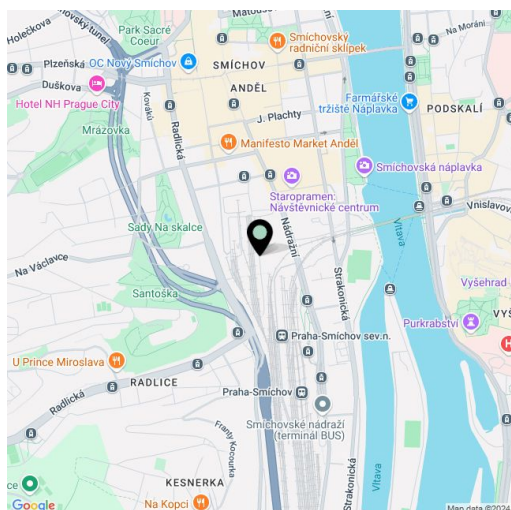
62.3 m², Prague 5, Smíchov, Albrightové

Total area	62 m ²
Parking	Garage parking.
Garage	Yes
Cellar	3 m ²
Service price	Monthly deposit for services, water, and heating: CZK 5,200 for one person, extra person CZK 800. Electricity is billed separately.
PENB	B
Reference number	106436
Available from	Immediately

This brand-new fully-furnished apartment is situated on the 3rd floor of the Smíchov City residence - a new building with an elevator and parking. Located close to the Anděl commercial center in Smíchov, in a newly arising district with a pedestrian zone, with great accessibility by metro and tram, and easy reach of the French School, the Smíchov and Výtoň embankments, several sports grounds, rich amenities and services, the Anděl metro station, and the Na Knížecí bus terminal.

The interior features a living room with a fully fitted open plan kitchen and dining area, a bedroom with built-in wardrobes, a bathroom (walk-in shower, toilet), and an entrance hall with built-in wardrobes.

Heat recovery ventilation, hardwood floors, tiles, French windows, central heating, dishwasher, induction cooktop, microwave oven, cellar. A garage parking space is included.



* Area of the unit according to the Civil Code. The area consists of the sum total area of the entire unit bounded by perimeter walls.