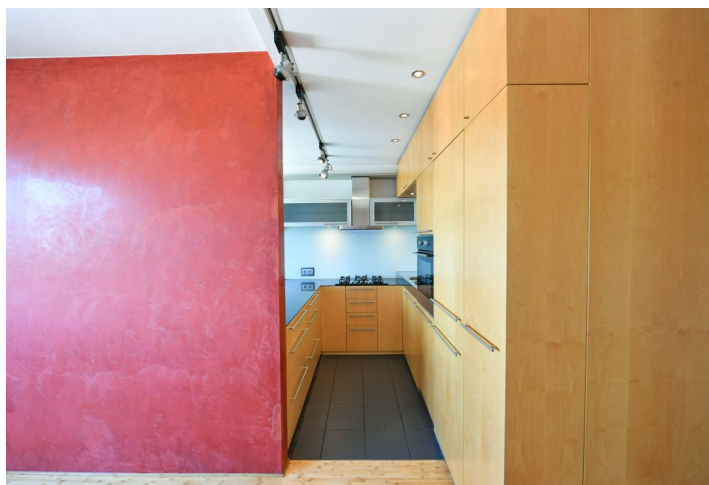
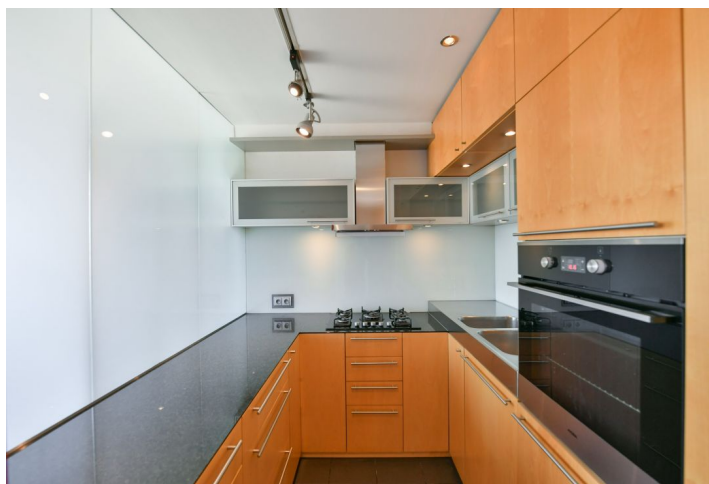




Apartment Four-bedroom (5+kk)

€ 1 393 | CZK 35 000

118 m², Prague 10, Strašnice, Krupská





Apartment Four-bedroom (5+kk)

€ 1 393 | CZK 35 000

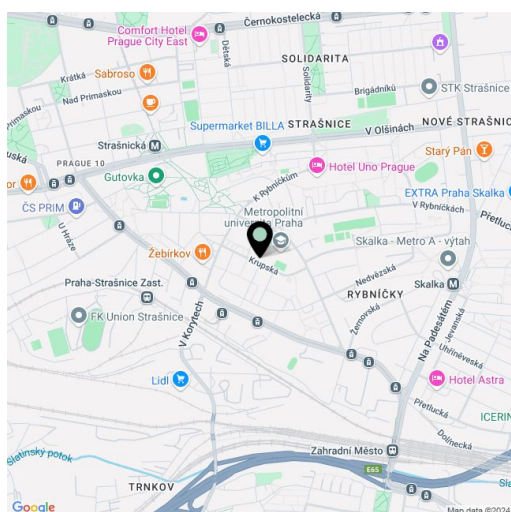
118 m², Prague 10, Strašnice, Krupská

Total area	123 m ²
Floor area*	118 m ²
Loggia	5 m ²
Parking	Garage parking.
Garage	Yes
Cellar	12 m ²
Service price	Monthly deposit for services, water, and heating: CZK 8,000. Electricity is billed separately.
PENB	G
Reference number	106443
Available from	Immediately

This renovated apartment is on the 5th floor of a well-maintained apartment building with an elevator situated in Strašnice, Prague 10, near Gutovka Park, the Slavia swimming pool, and Strašnická metro station. Complete amenities and services are available within walking distance, and the nearby Gutovka Park, Eden winter stadium, a sports hall, a swimming pool, football and rugby pitches, and an athletics stadium offer rich opportunities for sports activities. A tram stop is a short distance from the building. You can quickly connect to the South Connection Road by car.

The interior features a living room with a fully fitted open plan kitchen and dining area, a spacious master bedroom with a glass **enclosed balcony**, a bedroom with a built-in wardrobe, a third bedroom, a small study, a bathroom (bathtub, walk-in shower, bidet), a separate toilet, a utility room, and an entrance hall with a large built-in wardrobe.

Hardwood floors, tiles, original built-in wardrobes, central heating, washing machine, dryer, dishwasher, video entry phone, **cellar**. A **garage parking** space is available at CZK 2,000/month.



* Size of the unit according to the Housing Act.
The area consists of the sum total of the internal area of every room.



Apartment Four-bedroom (5+kk)

€ 1 393 | CZK 35 000

118 m², Prague 10, Strašnice, Krupská

