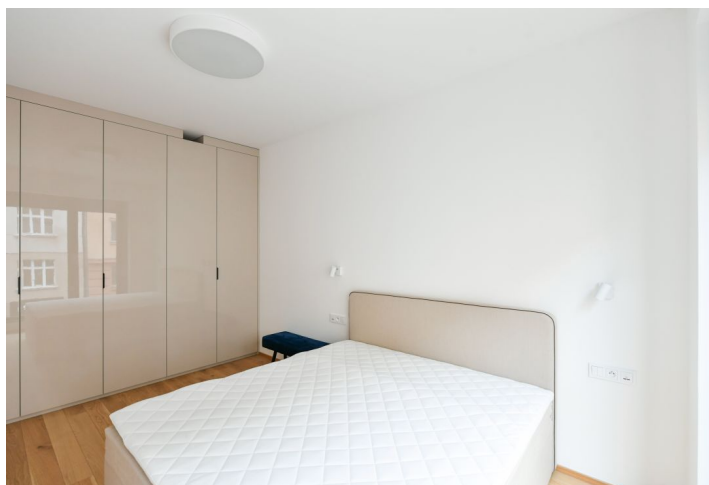




## Apartment One-bedroom (2+kk)

€ 1 503 | CZK 38 000

62.2 m<sup>2</sup>, Praha 6, Bubeneč, Vítězné náměstí





## Apartment One-bedroom (2+kk)

€ 1 503 | CZK 38 000

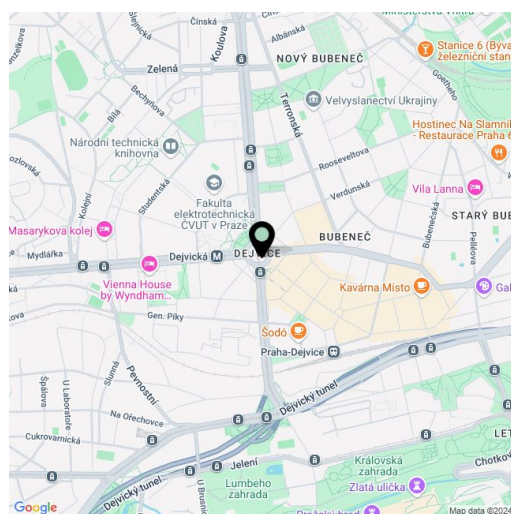
62.2 m<sup>2</sup>, Praha 6, Bubeneč, Vítězné náměstí

Total area	67 m <sup>2</sup>
Floor area*	62 m <sup>2</sup>
Loggia	5 m <sup>2</sup>
Parking	Garage parking.
Garage	Yes
Cellar	Yes
Service price	Monthly deposit for services, water, and heating: CZK 7,000. Electricity is billed separately.
PENB	B
Reference number	106451
Available from	Immediately

This brand-new furnished apartment with an enclosed balcony is on the 2nd floor of the Victoria Palace - a newly built high-end residence by the Jakub Cigler Architekti architectural studio. Amenities include a 24/7 reception and security, parking, and a shared landscaped courtyard garden with a fountain and relaxation areas with benches. Located in the popular neighbourhood of Bubeneč with a wide range of amenities and services, a few steps from the Dejvická metro station, bus, and tram links, and the Czech Technical University campus. Within easy reach of the Stromovka and Letenské Sady parks as well as Prague Castle, conveniently located for the airport and Prague 6 international schools.

The interior features a living room with a fully fitted open plan kitchen and an enclosed balcony facing the street, a bedroom with a large built-in wardrobe, a fitted walk-in closet, a bathroom (bathtub, toilet, bidet shower), and an entrance hall with built-in wardrobes.

Heat recovery ventilation, smart home system, hardwood floors, tiles, automatic exterior blinds, central heating, underfloor heating, custom-made Hanák kitchen, dishwasher, induction stove top, microwav oven, washer, dryer, cellar. A garage parking space is included.



\* Area of the unit according to the Civil Code. The area consists of the sum total area of the entire unit bounded by perimeter walls.