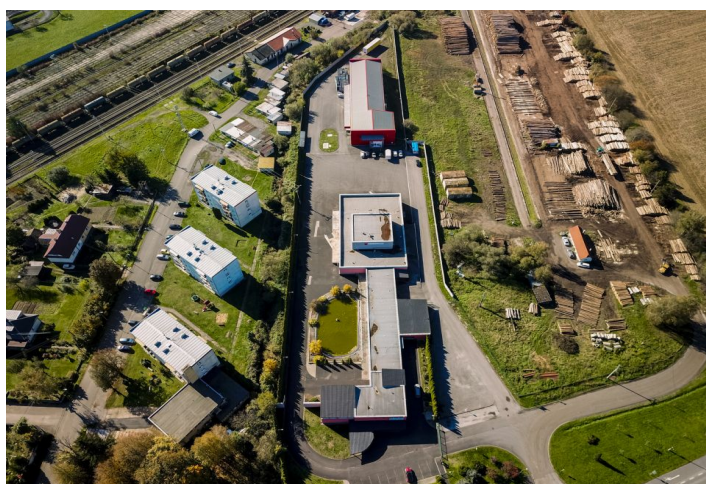




Industrial park

13 061 m², Vígfaš, Detva

Ask for price





Industrial park

13 061 m², Vígľaš, Detva[Ask for price](#)

Total area	13 061 m ²
Ceiling height	—
Floor loading capacity	—
Column grid structure	—
Structure	—
PENB	B
Reference number	106474

Industrial complex for sale consisting of three parts is located in Vígľaša in the Banská Bystrica region and stands on a plot of 13 061 m². The building was renovated in 2011, is insulated and ready for immediate operation.

The production-operational area was approved in 2005 and reconstructed in 2011. The total floor area is **2 894 m²**. The building is divided into three parts with separate entrances.

Front part:

Commercial premises on the ground floor (130 m²)

Service 4-room apartment on the first floor (450 m², kitchen, bathroom, toilet, underfloor heating)

Middle part:

Office space (150 sqm), hall (152 sqm)

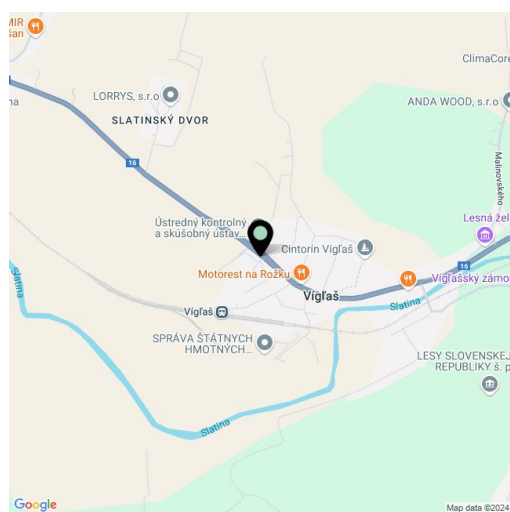
Rear part:

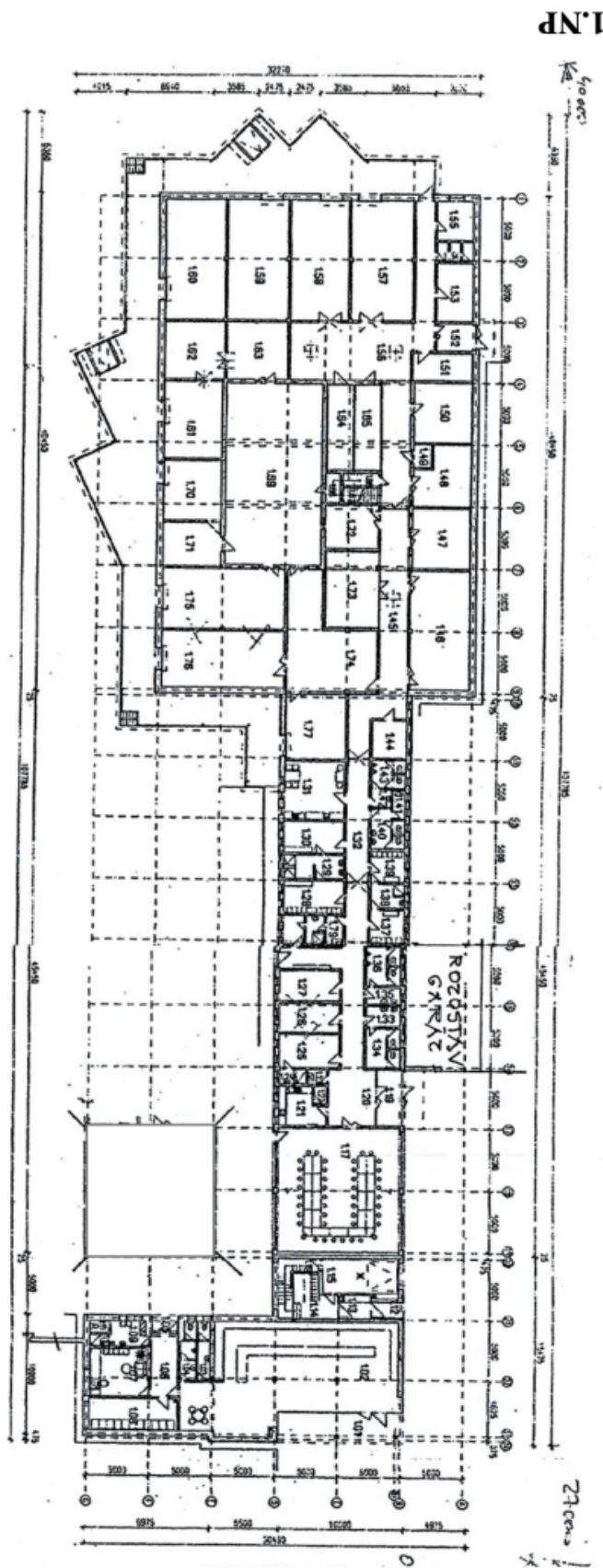
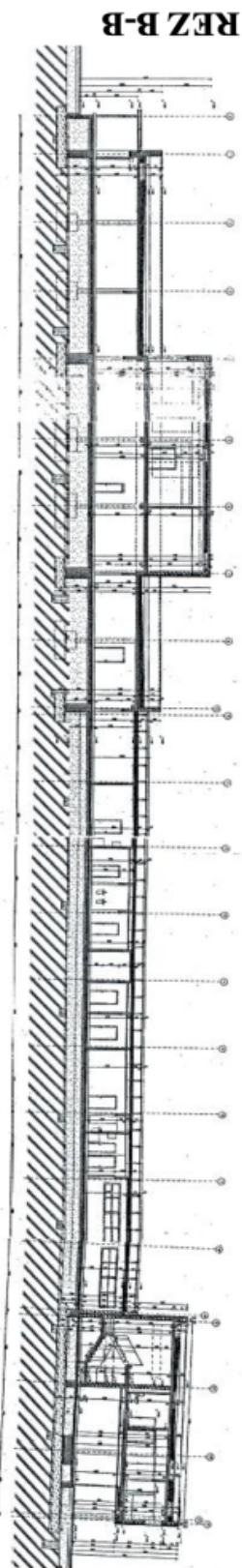
Production premises with facilities (**800 m²**), boiler room (3x Buderus gas boiler). The production area has tiled walls, several loading ramps, refrigeration, air conditioning and ventilation. The premises are suitable for the production and storage of food. Ceiling height 2,4 m. Possibility of extension, superstructure or raising the ceiling.

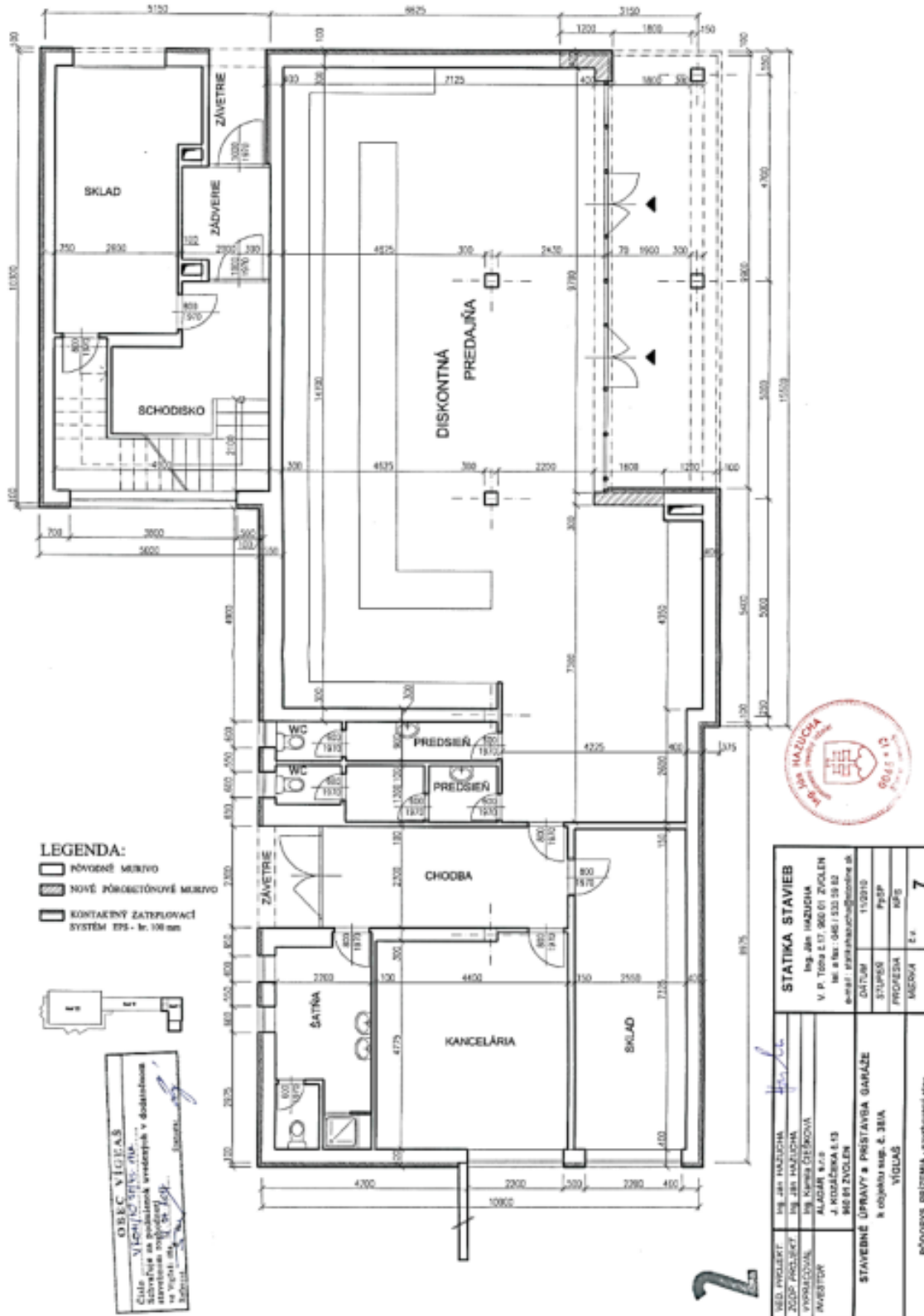
The premises are enclosed by a **concrete fence** and have an automatic sliding gate. **Security cameras**, alarm, security service. Each building has its own connection to utilities (gas pipeline, sewerage, public water supply + own well, electricity - own transformer station). Doors and windows are plastic with double glazing. In the area there is an artificial pond with a fountain. Outside parking has capacity for 25 cars.

The industrial complex is located less than a kilometer from the center of the village Vígľaš, which lies on the route Zvolen - Detva - Košice, about 15 km from the district town of Zvolen and 10 km from the town of Detva. Access to the property is by paved road. Complete amenities within easy reach.

Land plot 13 061 m².







PREDAJŇA 1.NP