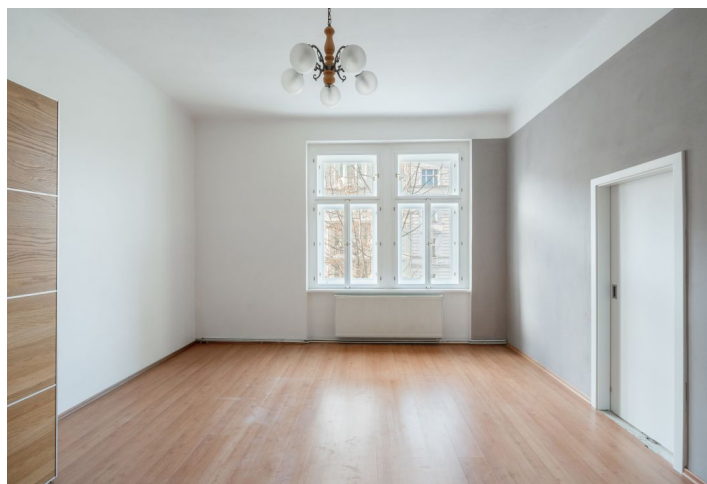
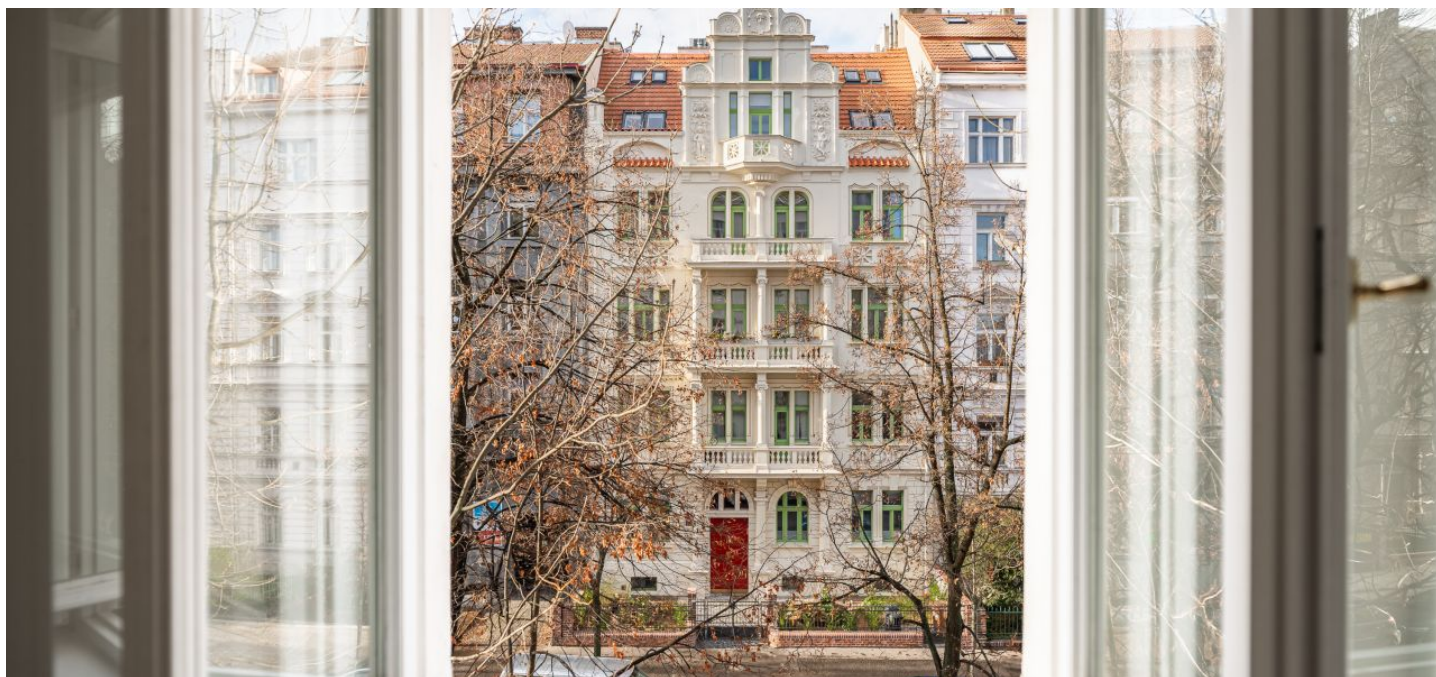




Apartment Two-bedroom (3+1)

€ 632 962 | CZK 15 900 000

83.7 m², Prague 7, Bubeneč, Nad Královskou oborou





Apartment Two-bedroom (3+1)

€ 632 962 | CZK 15 900 000

83.7 m², Prague 7, Bubeneč, Nad Královskou oborou

Total area	84 m ²
Parking	-
Cellar	2 m ²
PENB	G
Reference number	106583

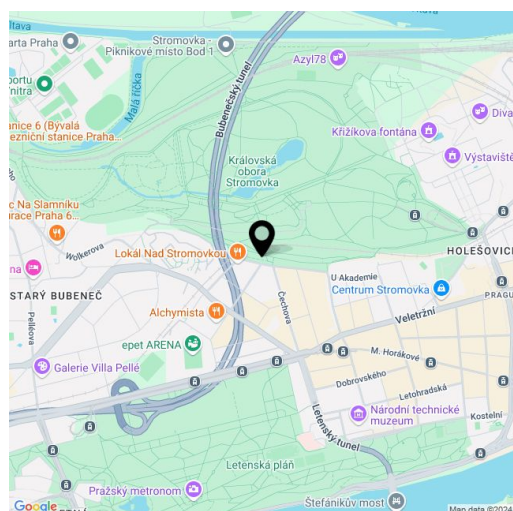
This beautiful sunny, west-facing apartment with views of the Stromovka Royal Game Reserve is located on the 2nd floor of an apartment building with an elevator. This attractive part of Prague 7 guarantees comfortable urban living in close proximity to a popular park, which invites you to relax in nature and a wide range of social activities.

The layout consists of a large living room, a kitchen, 2 bedrooms, a bathroom, a separate toilet, and 2 storage rooms. With a simple reconstruction, the layout can be changed to 3-bedroom or spacious 2-bedroom apartment. The apartment also includes a cellar. The building has been renovated and has a new glass elevator. Residents are allowed to park in the blue zone in front of the building.

Original historical elements, such as casement windows, high ceilings, and original stoves, give the apartment a unique period atmosphere and unmistakable character. The view of the greenery further enhances this impression. Heating is provided by a gas boiler. The apartment is suitable for modernization.

The sought-after area in the vicinity of the Stromovka Royal Game Reserve offers the perfect combination of full civic amenities, abundant greenery, and easy access to the city center. In the vicinity you will find a large number of cafes, bistros, restaurants, and shops, including a large shopping mall, as well as cultural destinations, such as the National Gallery in the Trade Fair Palace, the Industrial Palace at the Exhibition Center, or the popular Bio Oko community cinema. The city center is conveniently and quickly accessible by tram, for drivers the close entrance to the tunnel complex is a great advantage.

Floor area 83.70 m², cellar 2 m².



* Area of the unit according to the Civil Code. The area consists of the sum total area of the entire unit bounded by perimeter walls.