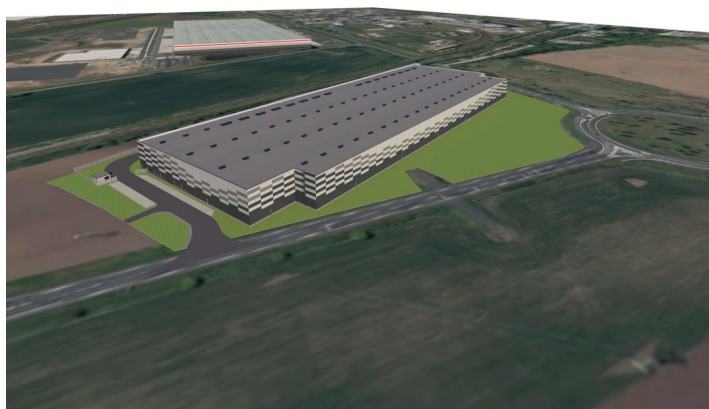
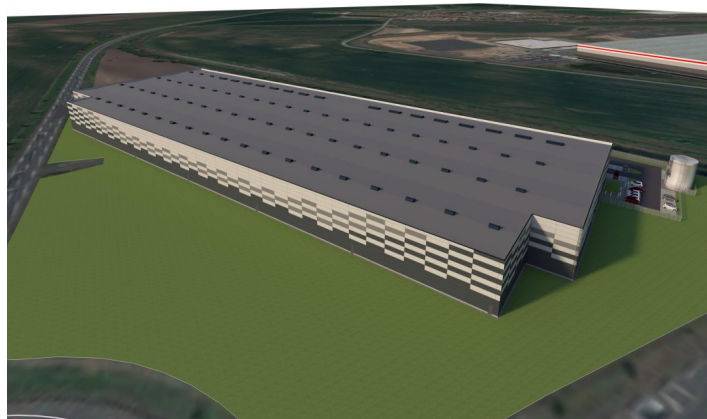




Warehouse space

6 989 m², Karviná, Stonava

Ask for price





Warehouse space

6 989 m², Karviná, Stonava

Ask for price

Total area	6 989 m ²
Available area for rent	6 989 m ²
Ceiling height	10 m
Floor loading capacity	5 t/m ²
Column grid structure	—
Structure	Reinforced concrete structure
PENB	G
Reference number	106749

6,989 sq.m. of warehouse, production and office space for lease in Stonava.

The premises are suitable for light manufacturing, logistics centres and warehousing. It offers a high standard and the facilities can be customised to the client's requirements. Available 9 to 12 months after contract signing.

Location:

Located in Stonava, the site is strategically located on the Baltic-Adriatic corridor. It is conveniently located in the Stonava region, on a strategic location with excellent accessibility for truck transport.

Facilities and Services:

- Flexible units (warehouse / office / light production / showroom).
- Property management on site
- On-site security service (24/7)
- Sufficient parking area

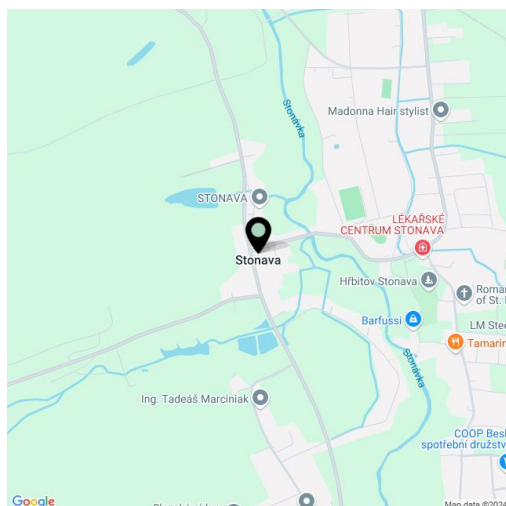
Industrial/warehouse space:

- Drive-in door 4 × 4,5 m
- Loading dock door 2,7 × 3 m
- Floor loading capacity 5 t/sq.m.
- Clear height 10 m
- Column module 12x24 m
- Power available up to 50 MW
- Logistic Railway spur possible
- BREEM certification

Offices:

- Air-conditioned offices

Tenant does not pay commission.





Warehouse space

6 989 m², Karviná, Stonava

Ask for price

