



Apartment One-bedroom (2+kk)

€ 337 838 | CZK 8 500 000

56.9 m², Prague 10, Strašnice





Apartment One-bedroom (2+kk)

€ 337 838 | CZK 8 500 000

56.9 m², Prague 10, Strašnice

Total area	57 m ²
Parking	-
Cellar	Yes
PENB	G
Reference number	106799

* Area of the unit according to the Civil Code. The area consists of the sum total area of the entire unit bounded by perimeter walls.

The ground floor apartment is part of a small apartment building located in a traditional residential area of Prague 10 - Strašnice with a complete infrastructure and plenty of greenery.

The layout of the apartment consists of an entrance hall, a living room with a preparation for a kitchen, and a bathroom (shower, sink, toilet, washing machine connection).

The building and apartment are currently being renovated. Facilities include plastic windows with triple glazing, oiled oak floors, fire-resistant security entrance doors with noise insulation, interior doors, Villeroy & Boch sink and toilet, cast marble bathtub of the same brand, and large-format floor and wall tiles. Heating will be provided by an 1x 1500W INGENIUM oil radiator and hot water will be provided by a boiler. **The apartment comes with a cellar**, and residents will have access to a shared garden. The brick building from the 1920s/1930s with 12 residential units has **no elevator**. Parking is possible in the blue zone in front of the building.

A convenient location on a side street near the Solidarita tram stop, about a 15-minute walk from the Strašnická metro station. There are restaurants, a post office, shops, and medical services in the area, and the district is made even more pleasant by the many green spaces in gardens and landscaped parks.

Floor area 56.9 m², cellar 2.6 m².

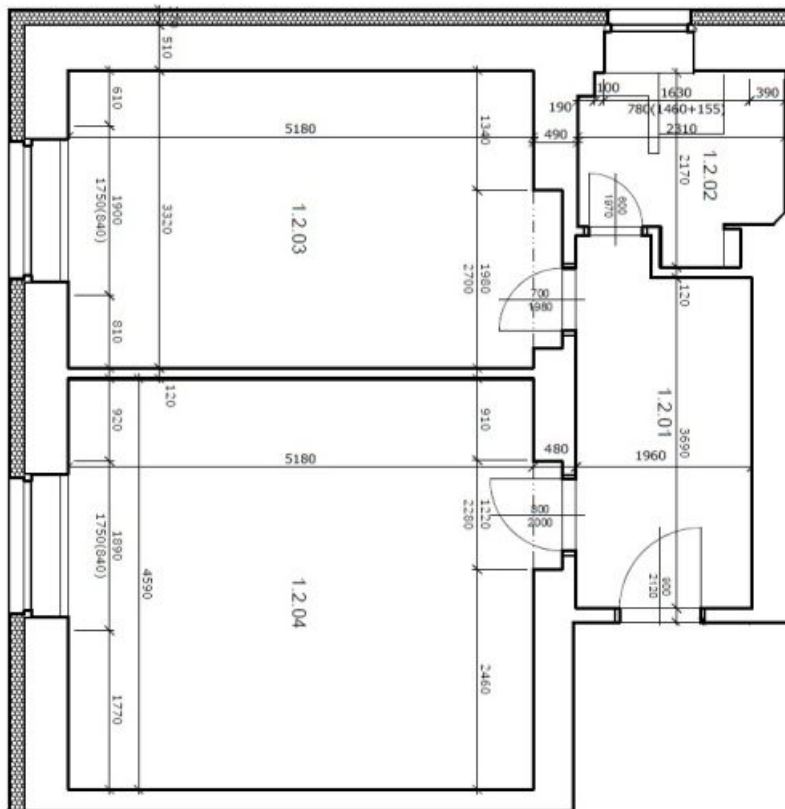
Completion expected in April 2025. Visualizations are for informational purposes only.



Apartment One-bedroom (2+kk)

€ 337 838 | CZK 8 500 000

56.9 m², Prague 10, Strašnice



UŽITNÁ PLOCHA - BYT 887/2		VÝMĚRA	SVĚTLÁ VÝŠKA
1.2.01	CHODBA + KK	7,63	2700 mm
1.2.02	KOUPELNA + WC	4,23	2700 mm
1.2.03	LOŽNICE	17,24	2700 mm
1.2.04	OBYVACÍ POKOJ	23,80	2700 mm
CELKEM		52,90	M²