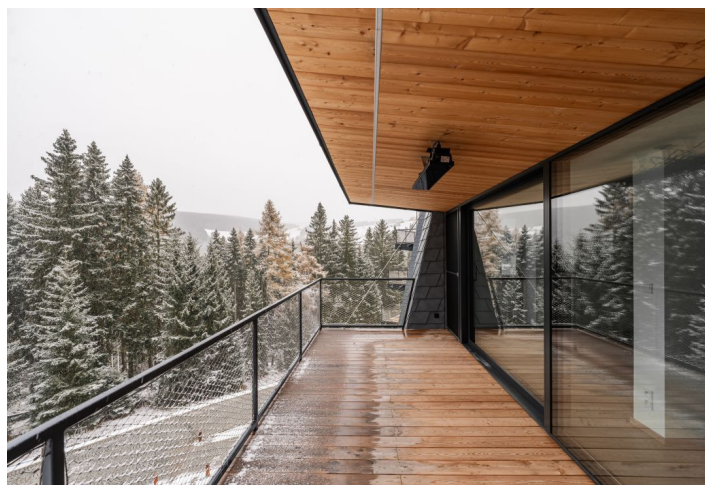
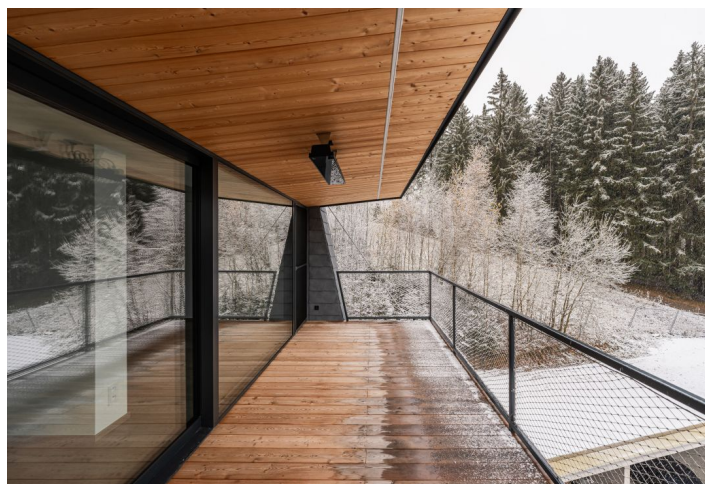
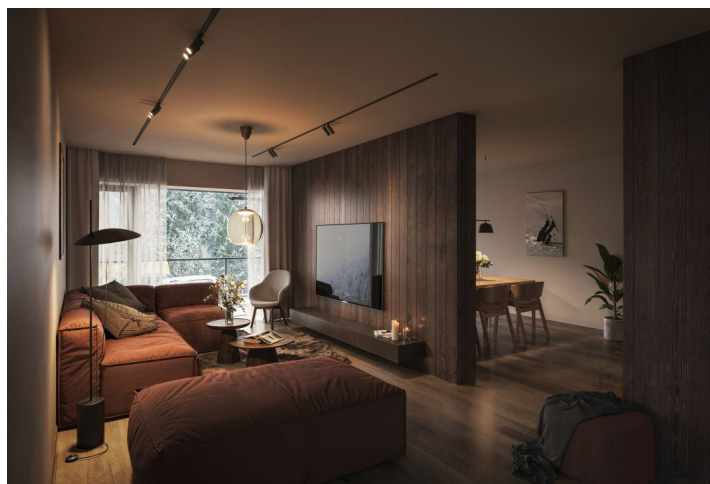




Apartment Three-bedroom (4+kk)

Ask for price

124.6 m², Trutnov, Pec pod Sněžkou





Apartment Three-bedroom (4+kk)

[Ask for price](#)124.6 m², Trutnov, Pec pod Sněžkou

Total area	140 m ²
Floor area*	125 m ²
Loggia	15 m ²
Parking	1 parking spaces
Cellar	-
PENB	G
Reference number	106822

* Area of the unit according to the Civil Code. The area consists of the sum total area of the entire unit bounded by perimeter walls.

Do you want to have your own piece of the world in the mountains that you don't need to worry about? Be with your family in the middle of nature and enjoy time together, or plan a weekend alone to recharge your mental strength? Be the first to ski down the slope in the morning, walk for hours through the forest, listen to its sounds and smell its scent, observe wildlife in its natural habitat, go to the sauna, swim in the pool, have a drink in the private lobby? All of this is possible with a new intimate project with 10 private apartments in the largest Czech ski resort with a view of Sněžka.

In the [Bramberk Apartments](#) project, you are not just buying an apartment. For your relaxation, you can also use a **modern lounge** with a kitchenette and a **self-service bar**, a **wellness area** with a **15-meter-long swimming pool** and a **jacuzzi**, a relaxation room or a **sunny terrace**. The facilities also include a ski and bicycle storage room. Together with the apartment, you will get **trouble-free parking** - 1 parking space by the apartment and 1 garage space to purchase directly in Pec pod Sněžkou at the Javor Hotel, where you can park not only during the day while playing sports, but also in the evening when you go to dinner at one of the renowned restaurants. The administrator will provide a **complete service**, including care for your comfort (delivery, shopping, provision of firewood, ski pass, etc.), even during your absence.

The generously designed apartment on the 3rd floor offers a spacious living room with preparation for a kitchen, 3 bedrooms, 2 bathrooms (1 with preparation for an **infrared sauna**), a large entrance hall, a separate toilet and a pantry. The living room is connected to a **southeast-facing loggia** with **beautiful views** of the **forests of the Krkonoše National Park**. The interior with a touch of unpretentious luxury is characterized by natural colors in muted tones. The standard includes **air conditioning** with heating function, three-layer **oak floors** with a choice of 3 colors, large-area aluminum windows and doors to the loggia with insulating triple glazing, wooden entrance doors with security locks, fire protection and hydraulic closers, videophone, **Villeroy & Boch** and **Kaldewei** sanitary facilities, loggia heating and **fireplace stoves** (choice of 3 types). According to the client's wishes, the interior can be customized by **Konsepti**.

The building with 2 elevators is being created by rebuilding the architecturally significant recreation center of the Czechoslovak State Bank from the 1970s by architect **Vladimír Vokatý**, co-author of the **O2 arena**. The project includes extensive land guaranteeing protection from construction in the immediate vicinity. The new apartments are located 200 meters from the **Hnědý**



Apartment Three-bedroom (4+kk)

Ask for price

124.6 m², Trutnov, Pec pod Sněžkou

Total area	140 m ²
Floor area*	125 m ²
Loggia	15 m ²
Parking	1 parking spaces
Cellar	-
PENB	G
Reference number	106822

Vrch ski lift and 1 km from the **Javor ski lift**. Hiking tours, including a hike to **Sněžka**, are possible directly from the house. The journey from Prague to the apartment takes about 135 minutes, from Hradec Králové less than 90 minutes.

Floor area 124.6 m², loggia 15.1 m².

For more information about the project, visit the website

www.apartmanybramberk.cz.

* Area of the unit according to the Civil Code. The area consists of the sum total area of the entire unit bounded by perimeter walls.



Apartment Three-bedroom (4+kk)

124.6 m², Trutnov, Pec pod Sněžkou

Ask for price

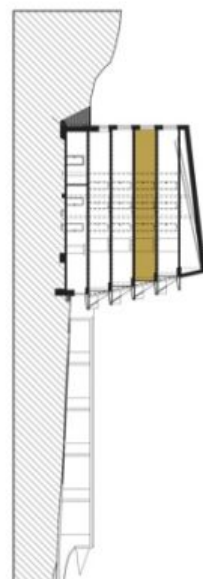
3.09.01	PŘEDSÍŇ	15.10 m ²
3.09.02	KOUPELNA	4.08 m ²
3.09.03	KOMORA	2.62 m ²
3.09.04	OBYTNÝ PROSTOR	35.92 m ²
3.09.05	LOŽNICE	9.41 m ²
3.09.06	TOALETA	2.29 m ²
3.09.07	CHODBA	2.10 m ²
3.09.08	KOUPELNA	9.74 m ²
3.09.09	LOŽNICE	17.54 m ²
3.09.10	LOŽNICE	17.54 m ²



3. NP



Půdorys objektu



Řez objektem

Apartment číslo

09

Dispozice 4+KK
Podlaží 3.NP
Celková plocha apartmánu 124.6 m²
Plocha lodžie 15.1 m²
Parkovací stání

Apartmenty (kdež) Vchůz a výhledy jsou na směry. Všechny měřítka a informace jsou pouze orientační. Součástí kupní ceny apartmánu není nábytek, spotřebiče, podlahy, vnitřní instalace, včetně elektrické a vodní. Pro více informací kontaktujte makléře. Apartmánu je věnováno posuvné okno a vnitřní nosiče sádky dle vnitřního návrhu 366/2013 Sb.

