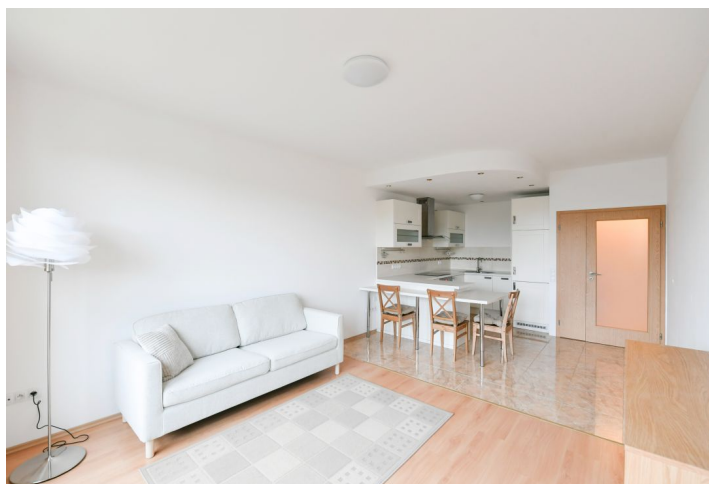




Apartment One-bedroom (2+kk)

€ 1 105 | CZK 28 000

65 m², Prague 6, Vokovice, K Červenému vrchu





Apartment One-bedroom (2+kk)

€ 1 105 | CZK 28 000

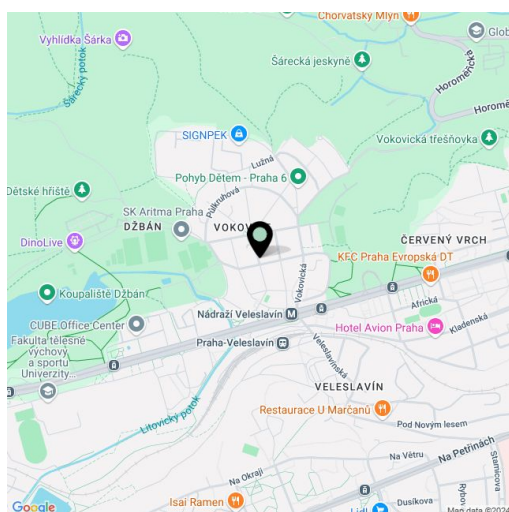
65 m², Prague 6, Vokovice, K Červenému vrchu

Total area	68 m ²
Floor area*	65 m ²
Loggia	3 m ²
Parking	Garage parking.
Garage	Yes
Cellar	Yes
Service price	Monthly deposit for services, water, and heating: CZK 5,000. Electricity is billed separately.
PENB	C
Reference number	106904
Available from	Immediately

Boasting an enclosed balcony and green views, this furnished apartment is on the 5th floor of a gated residential complex with 24/7 security, a shared garden, a children's playground, and parking. Located in Vokovice, Prague 6, in a quiet green residential neighborhood in the immediate vicinity of the Divoká Šárka nature preserve. Quick access to the city center (two min. by walk to trams and Nádraží Veleslavín metro) and the airport, convenient to international schools, with full amenities within easy reach.

The apartment includes a living room with a fully fitted open plan kitchen and dining area, a bedroom with a built-in wardrobe, a bathroom (bathtub, toilet), a utility/storage room, and an entrance hall. The **enclosed balcony** is accessible from both main rooms.

Laminate floating floors, tiles, central heating, washing machine, dishwasher, **cellar**, chip entry to the building. A **garage parking** space is included.



* Size of the unit according to the Housing Act.
The area consists of the sum total of the internal area of every room.



Apartment One-bedroom (2+kk)

€ 1 105 | CZK 28 000

65 m², Prague 6, Vokovice, K Červenému vrchu

