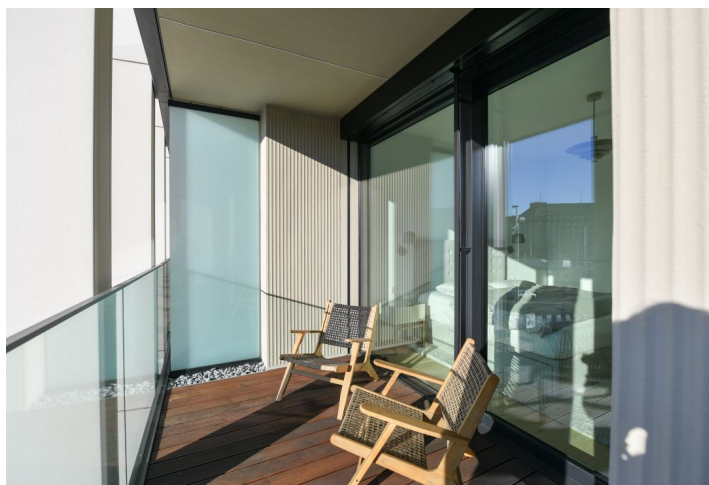




## Apartment One-bedroom (2+kk)

Rented

60.8 m<sup>2</sup>, Prague 6, Bubeneč, Vítězné náměstí





## Apartment One-bedroom (2+kk)

Rented

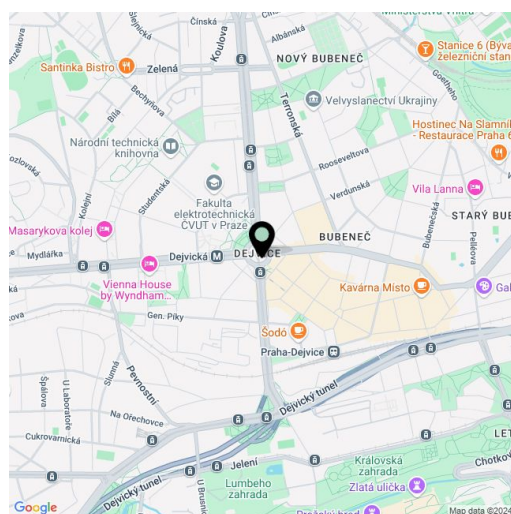
60.8 m<sup>2</sup>, Prague 6, Bubeneč, Vítězné náměstí

Total area	73 m <sup>2</sup>
Floor area*	61 m <sup>2</sup>
Balcony	12 m <sup>2</sup>
Parking	Garage parking.
Garage	Yes
Cellar	Yes
Service price	Monthly deposit for services, water, and heating: CZK 7,000. Electricity is billed separately.
PENB	B
Reference number	107102
Available from	Immediately

This brand-new good quality furnished apartment with a balcony and views of the Vítězné Square is on the 2nd floor of the Victoria Palace - a newly built high-end residence by the Jakub Cigler Architekti architectural studio. Amenities include a 24/7 reception and security, parking, and a shared landscaped courtyard garden with a fountain and relaxation areas with benches. Located in the popular neighbourhood of Bubeneč with a wide range of amenities and services, a few steps from the Dejvická metro station, bus, and tram links, and the Czech Technical University campus. Within easy reach of the Stromovka and Letenské Sady parks as well as Prague Castle, conveniently located for the airport and Prague 6 international schools.

The interior features a living room with a dining area and a fully fitted open plan kitchen, a bedroom, a bathroom (bathtub, toilet with a bidet shower), and an entrance hall. The **balcony** is accessible from both main rooms.

**Heat recovery ventilation, hardwood floors, tiles, security entry door, built-in wardrobes (will be installed in January 2025), well insulated windows, automatic exterior blinds, central heating, washer/dryer, custom-made Nobilia kitchen, dishwasher, induction stove top, microwave oven, coffee machine, Smart TV, cellar. A garage parking space is included.**



\* Area of the unit according to the Civil Code. The area consists of the sum total area of the entire unit bounded by perimeter walls.



## Apartment One-bedroom (2+kk)

Rented

60.8 m<sup>2</sup>, Prague 6, Bubeneč, Vítězné náměstí

