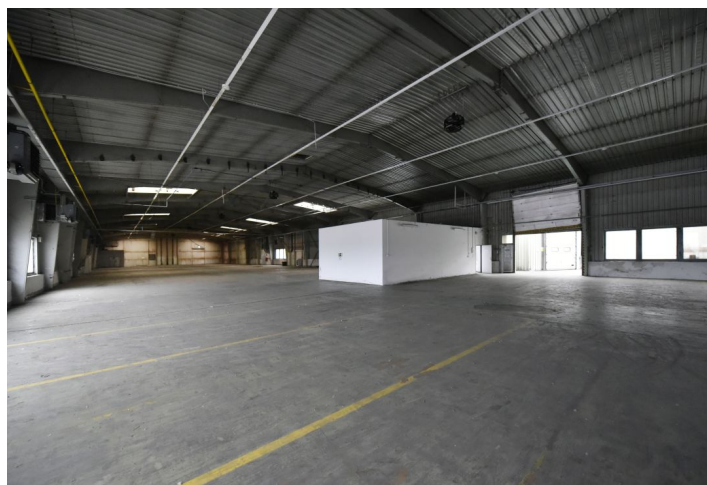
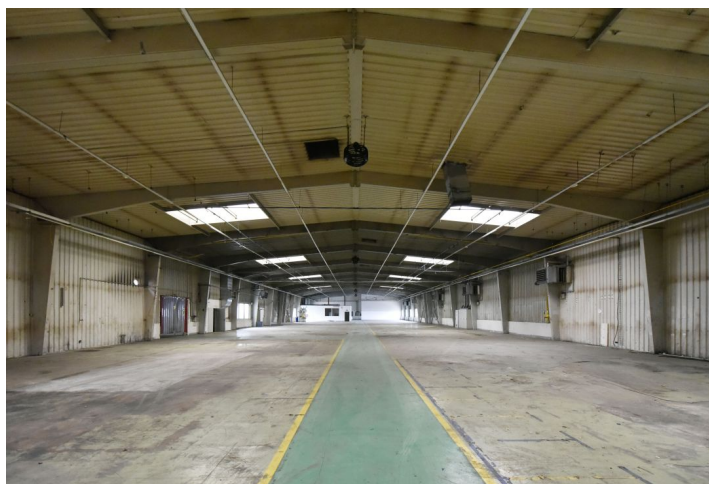




Industrial space

2 373 m², Nymburk, Lysá nad Labem, Mírová

Ask for price





Industrial space

2 373 m², Nymburk, Lysá nad Labem, Mírová

Ask for price

Total area	2 373 m ²
Available area for rent	2 373 m ²
Ceiling height	5 m
Floor loading capacity	—
Column grid structure	—
Structure	Reinforced concrete structure
PENB	G
Reference number	107188

2,373 sq m of industrial and office space for lease. The premises are suitable for light manufacturing.

Location:

The park is located near the D10 and D11 motorways connecting Prague and the north-east of the Czech Republic.

Features and Services:

- Park maintenance
- Sufficient parking space

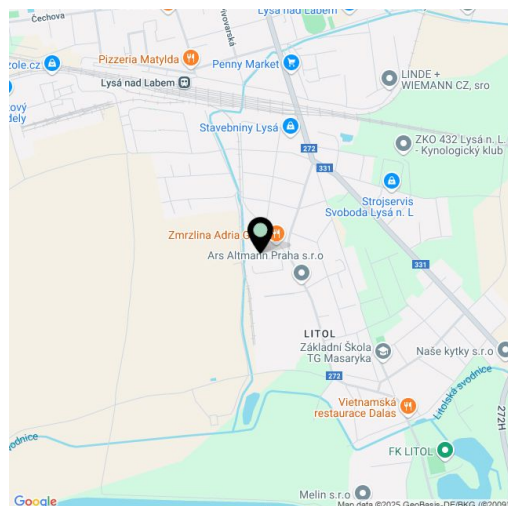
Industrial space:

- 9 x Docks (7+2)
- 2 x drive in
- Clear height 5,5 m
- Distribution of pressurised air

Office:

- Office space can be customized according to the tenant's requirements

Lessee pays no commission.





Industrial space

Ask for price

2 373 m², Nymburk, Lysá nad Labem, Mírová

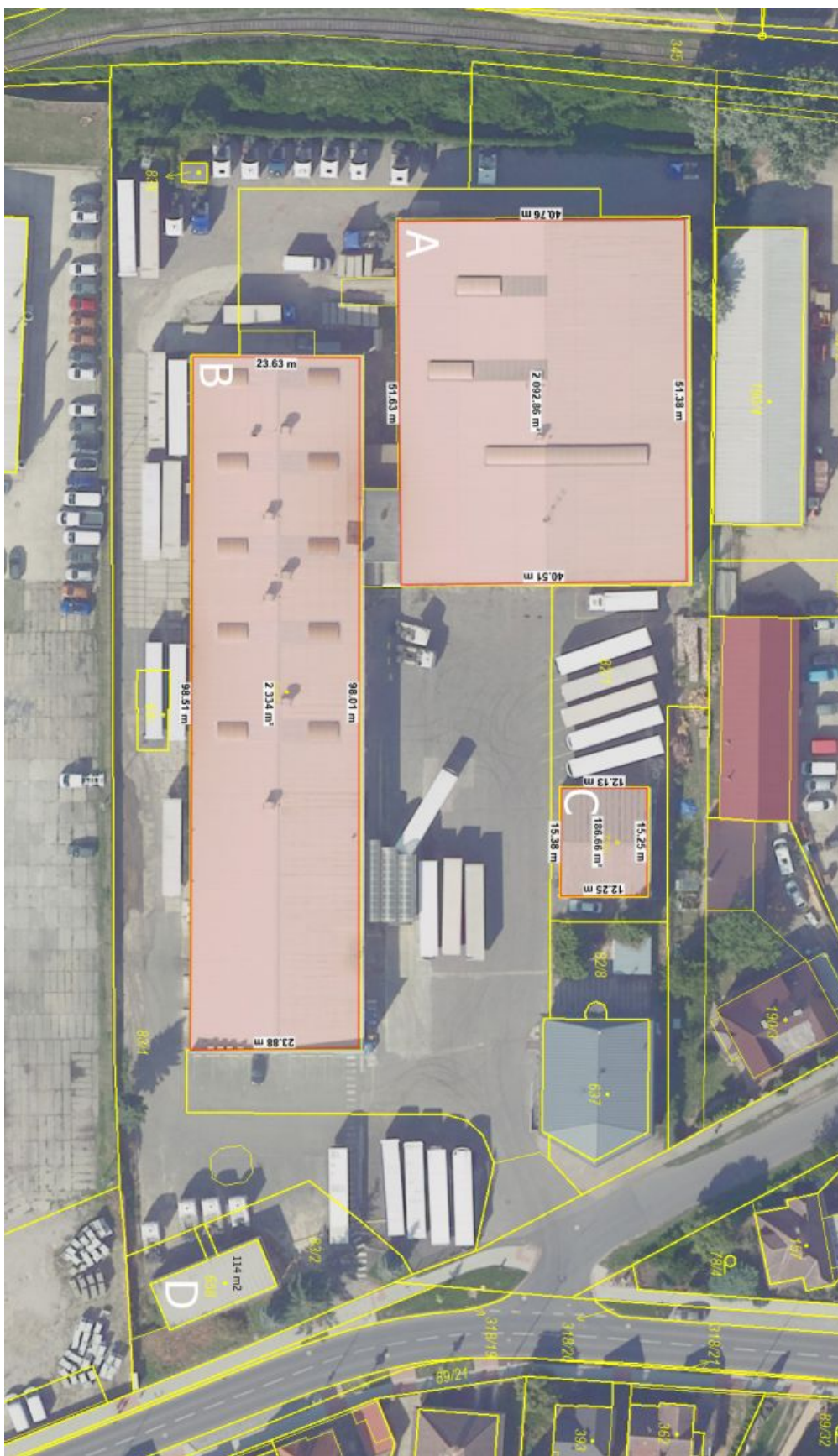




Industrial space

Ask for price

2 373 m², Nymburk, Lysá nad Labem, Mírová

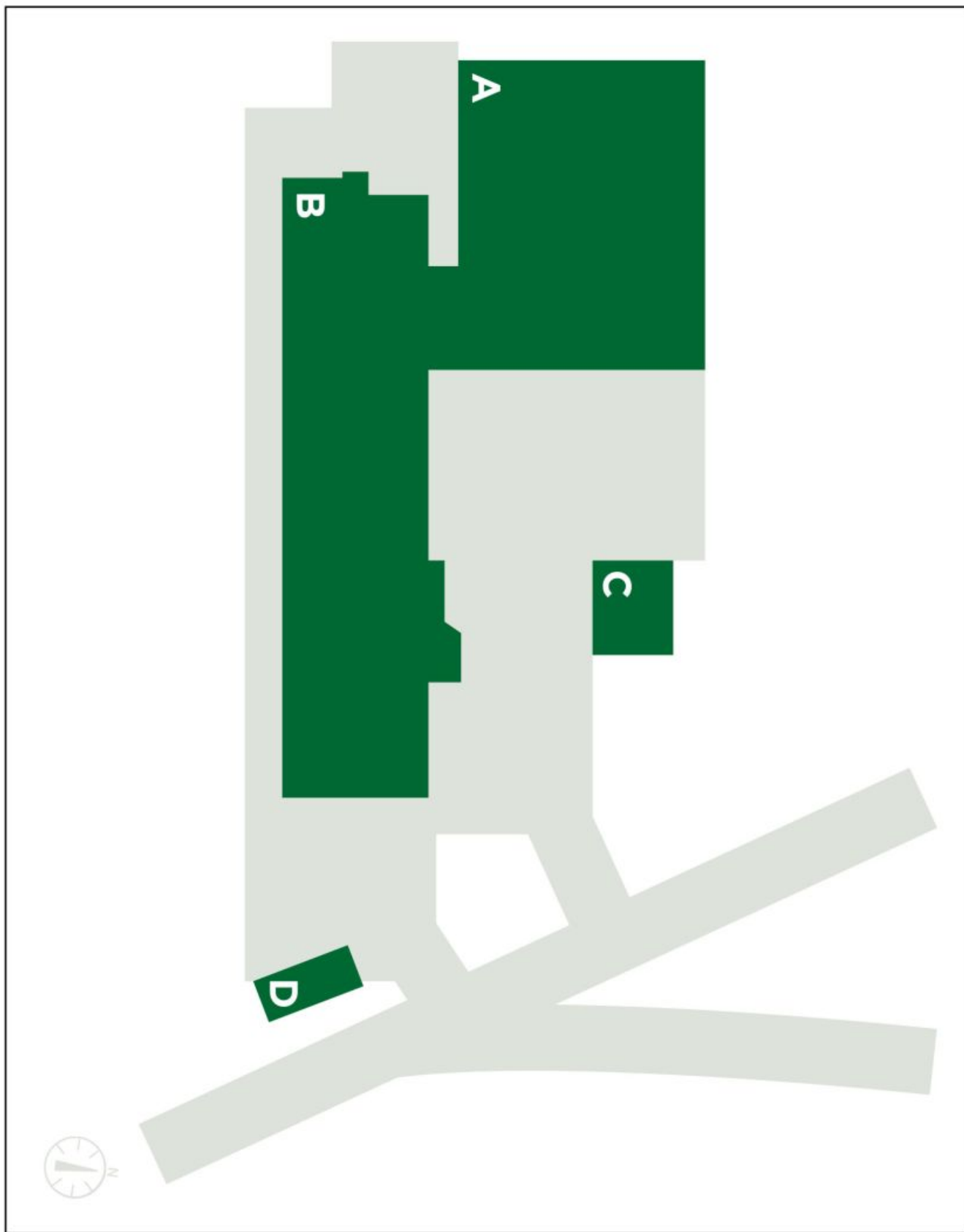




Industrial space

2 373 m², Nymburk, Lysá nad Labem, Mírová

Ask for price





Industrial space

2 373 m², Nymburk, Lysá nad Labem, Mírová

Ask for price

