



Industrial space

1 464 m², Vyškov, Rousínov, Tománkova

Ask for price





Industrial space

1 464 m², Vyškov, Rousínov, Tománkova

Ask for price

Total area	1 464 m ²
Available area for rent	1 464 m ²
Ceiling height	9.8 m
Floor loading capacity	10 t/m ²
Column grid structure	—
Structure	Reinforced concrete structure
PENB	G
Reference number	107192

1,464 sq.m. of industrial, warehouse and office space for lease in the industrial area situated close to Brno. Premises are suitable for light industry, logistics and business activity.

Location:

The park is located in Rousínov, about 20 km east of Brno, close to the D1 highway.

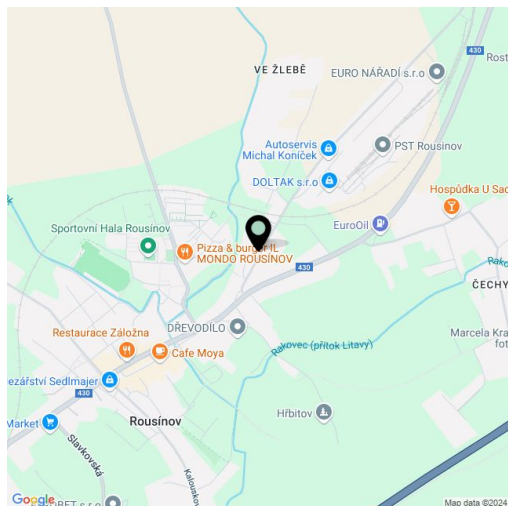
Features and Services:

- Gas heating
- Clear height 9,8 m
- Floor loading capacity 10 t / m²
- Loading ramps
- Handling area
- Possibility of direct entrance for vans
- sectional doors
- Parking for trucks
- Parking for cars

Office:

Variable space

Lessee pays no commission.

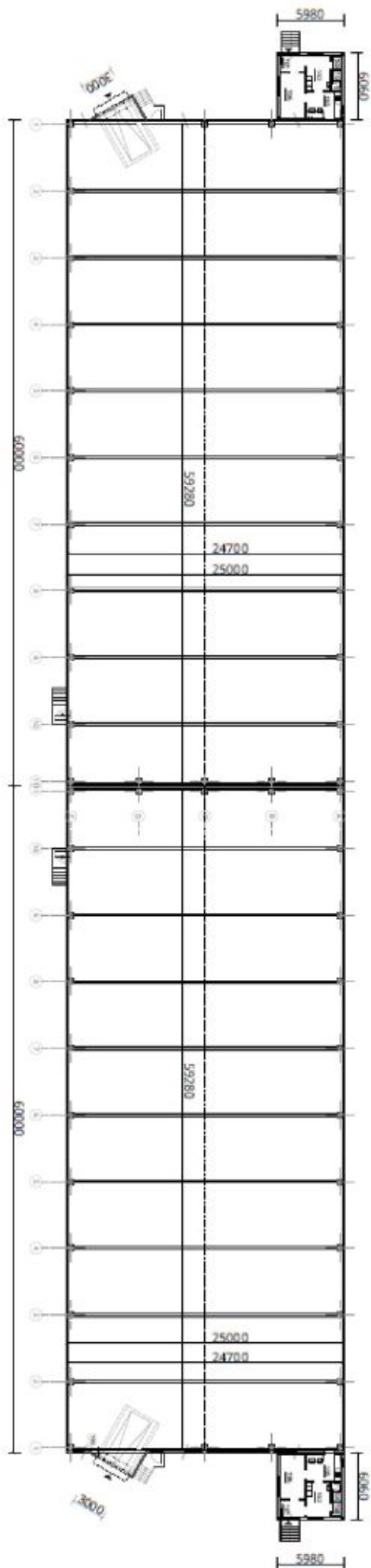




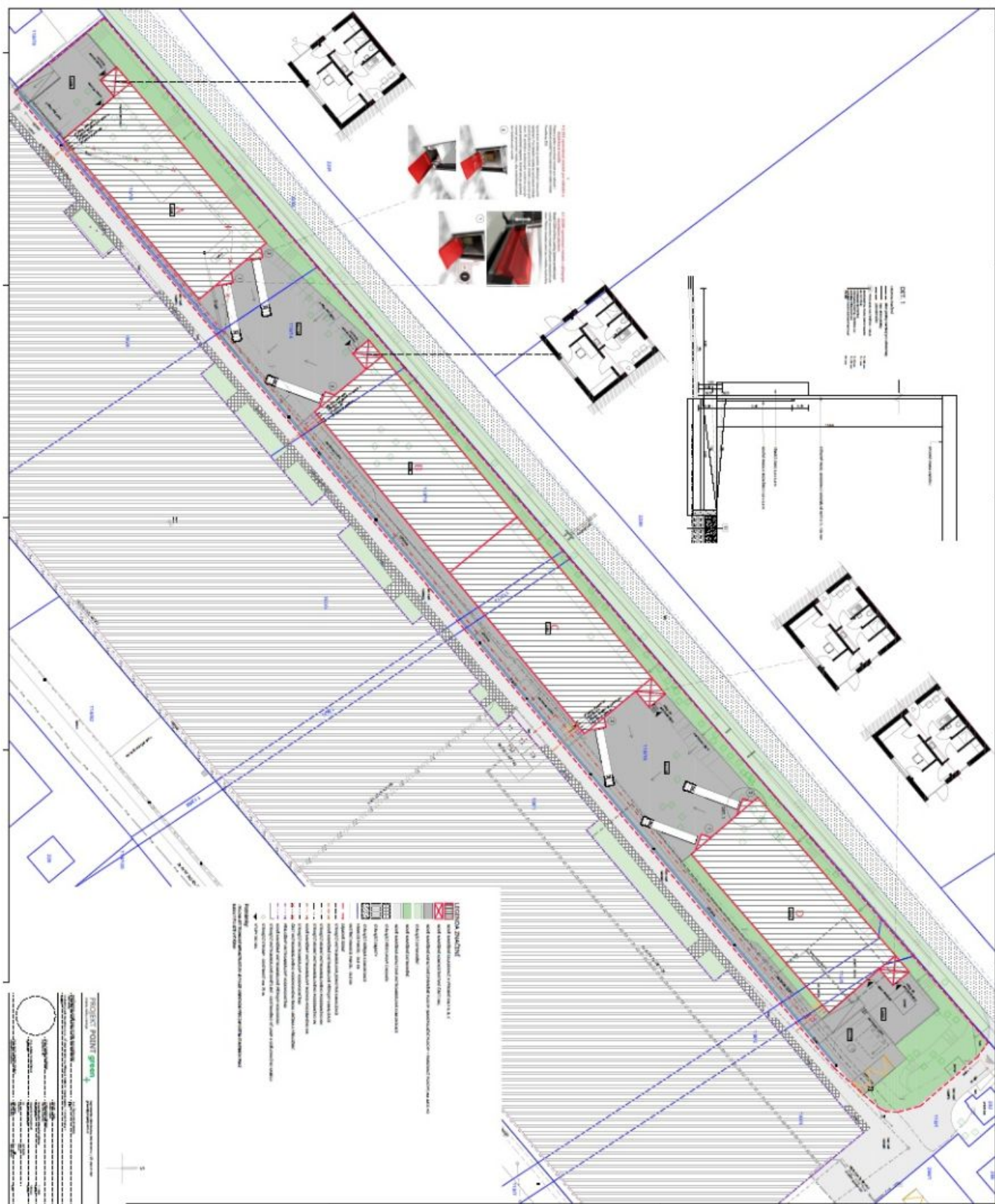
Industrial space

1 464 m², Vyškov, Rousínov, Tománkova

Ask for price



Půdorys haly B, C

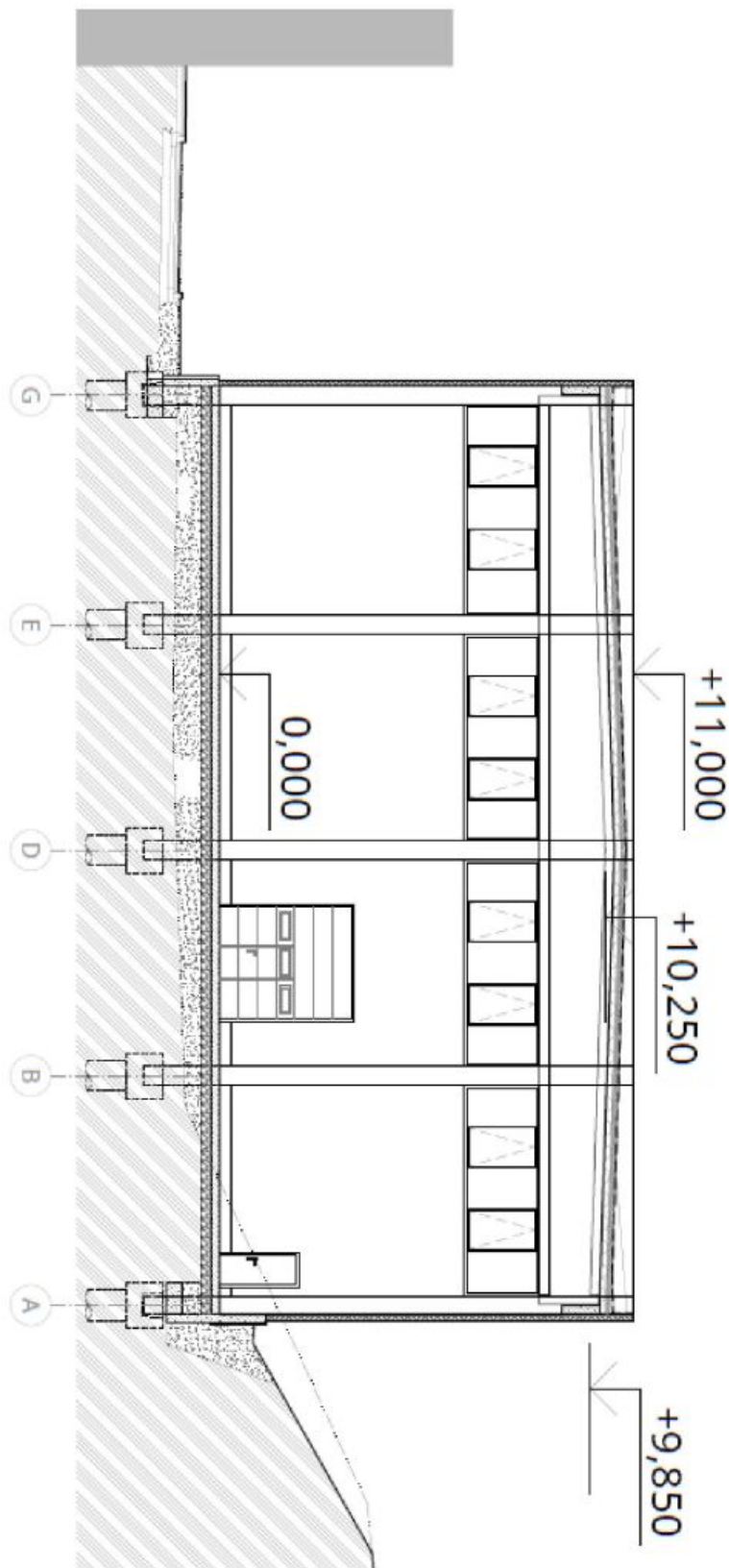




Industrial space

1 464 m², Vyškov, Rousínov, Tománkova

Ask for price



Řez Hal A, B, C, D