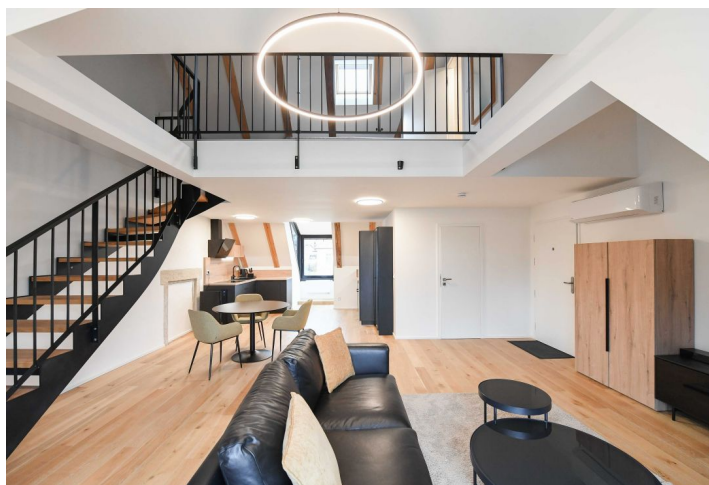
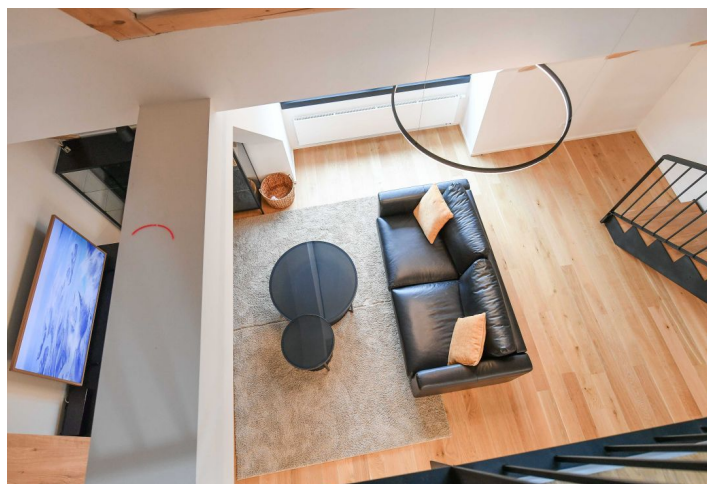
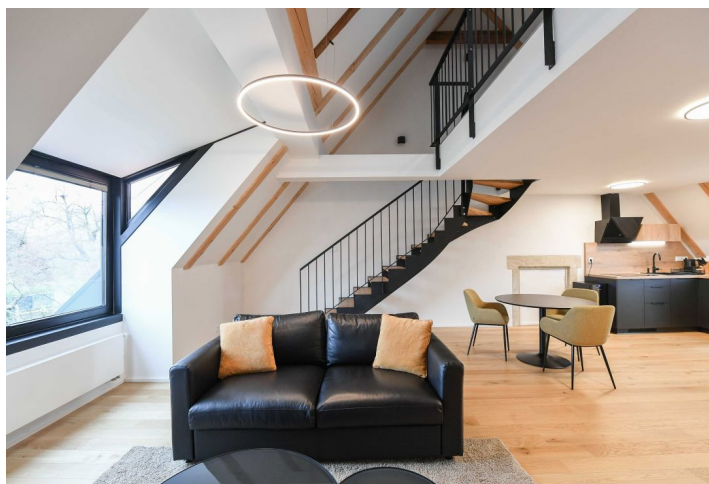




Apartment One-bedroom (2+kk)

Rented

78.8 m², Prague 5, Jinonice, Řeporyjská





Apartment One-bedroom (2+kk)

Rented

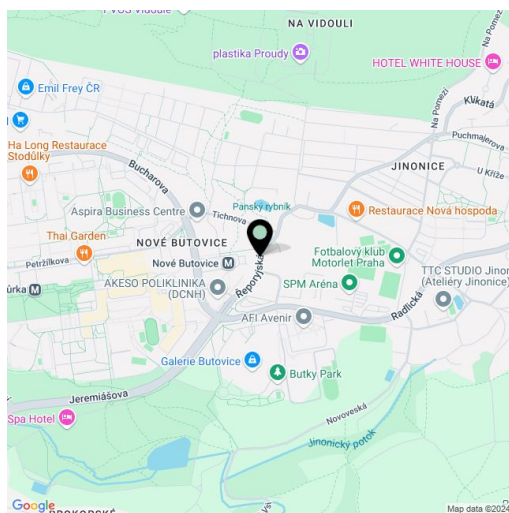
78.8 m², Prague 5, Jinonice, Řeporyjská

| | |
|------------------|--|
| Total area | 79 m ² |
| Parking | Garage parking. |
| Garage | Yes |
| Cellar | Yes |
| Service price | Monthly deposit for services, water, and heating: CZK 5,000 for 1 person + CZK 800 for an additional person. Electricity is billed separately. |
| PENB | Not required |
| Reference number | 107214 |
| Available from | Immediately |

This brand-new, furnished air-conditioned split-level apartment is on the 2nd topmost floor of the Jinonický dvůr Residence - a completely modernized gated residential complex with preserved original architectural features, a landscaped courtyard with relaxation points, and a historic fountain. Set in a quiet residential neighborhood surrounded by greenery, on the edge of the Vidoule natural protected area, near two local ponds, and just moments from the German School. Nearby are several playgrounds and numerous sports facilities including a winter stadium and skatepark. The Nové Butovice metro station and shopping mall are within walking distance (5-10 minutes), and there is an easy connection to the city center and Anděl business and entertainment zone.

The lower level includes an open plan living room with a fully fitted kitchen, a fitted **walk-in closet** with a utility area, and a toilet. The upper floor features an open gallery/bedroom, and a bathroom (walk-in shower, toilet).

Air-conditioning, hardwood floors, tiles, security entry door, triple-glazed windows, pleated blinds, central heating, washer/dryer, dishwasher, induction stove top, microwave oven, wine fridge, **cellar**. No elevator. A **garage parking** space is available at CZK 1,500/month.



* Area of the unit according to the Civil Code. The area consists of the sum total area of the entire unit bounded by perimeter walls.