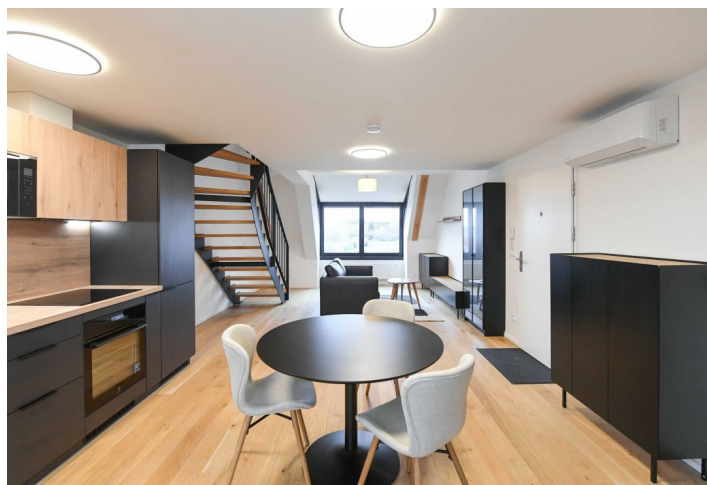
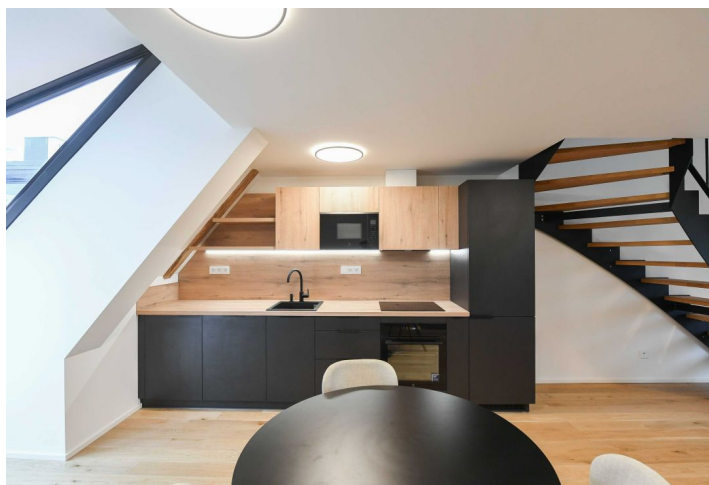
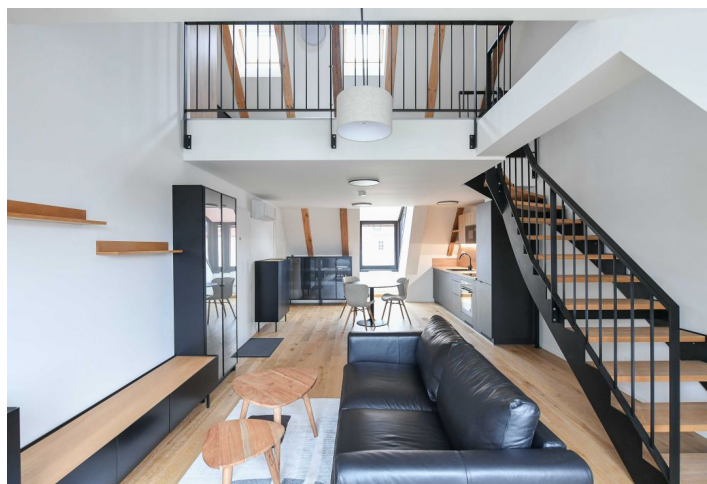
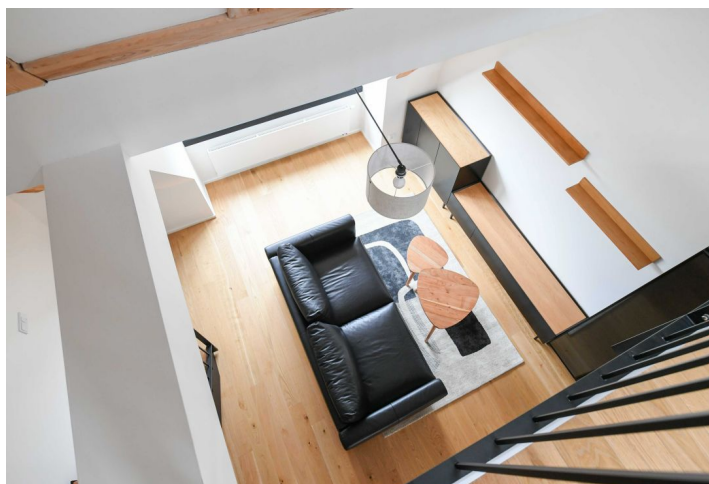
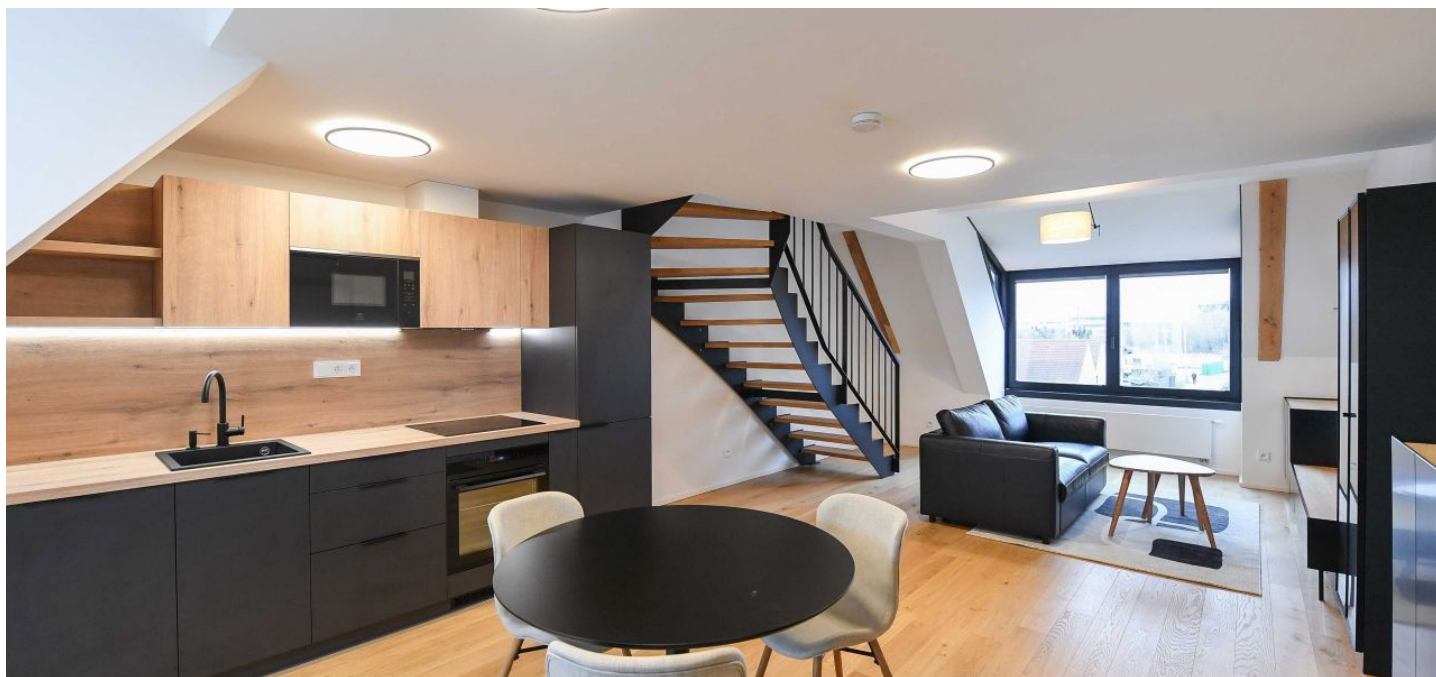




Apartment One-bedroom (2+kk)

€ 1 111 | CZK 28 000

67.3 m², Prague 5, Jinonice, Řeporyjská





Apartment One-bedroom (2+kk)

€ 1 111 | CZK 28 000

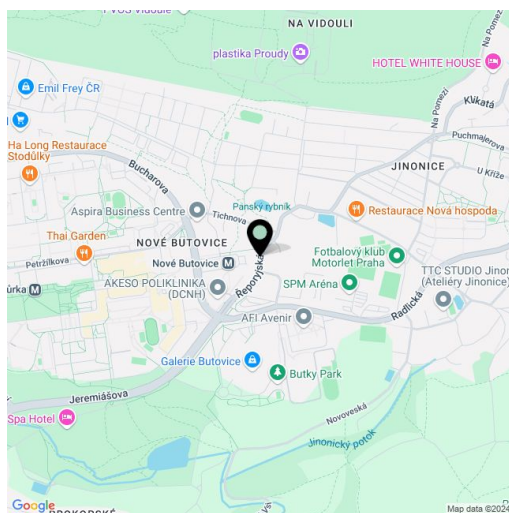
67.3 m², Prague 5, Jinonice, Řeporyjská

Total area	67 m ²
Parking	Garage parking.
Garage	Yes
Cellar	Yes
Service price	Monthly deposit for services, water, and heating: CZK 4,400 for 1 person, + CZK 800 for an additional person. Electricity is billed separately.
PENB	Not required
Reference number	107216
Available from	Immediately

This brand-new furnished air-conditioned split-level apartment is on the 2nd topmost floor of the Jinonický dvůr Residence - a completely modernized gated residential complex with preserved original architectural features, a landscaped courtyard with relaxation points, and a historic fountain. Set in a quiet residential neighborhood surrounded by greenery, on the edge of the Vidoule natural protected area, near two local ponds, and just moments from the German School. Nearby are several playgrounds and numerous sports facilities including a winter stadium and a skatepark. The Nové Butovice metro station and shopping mall are within walking distance (5-10 minutes), and there is an easy connection to the city center and Anděl business and entertainment zone.

The lower level includes a living room with a fully fitted open plan kitchen, a utility/storage room, and a toilet. The upper floor features an open gallery/bedroom, and a bathroom (walk-in shower, toilet).

Air-conditioning, hardwood floors, tiles, security entry door, triple-glazed windows, pleated blinds, central heating, dishwasher, induction stove top, microwave oven, cellar. No elevator. A **garage parking** space is available at CZK 1,500/month.



* Area of the unit according to the Civil Code. The area consists of the sum total area of the entire unit bounded by perimeter walls.