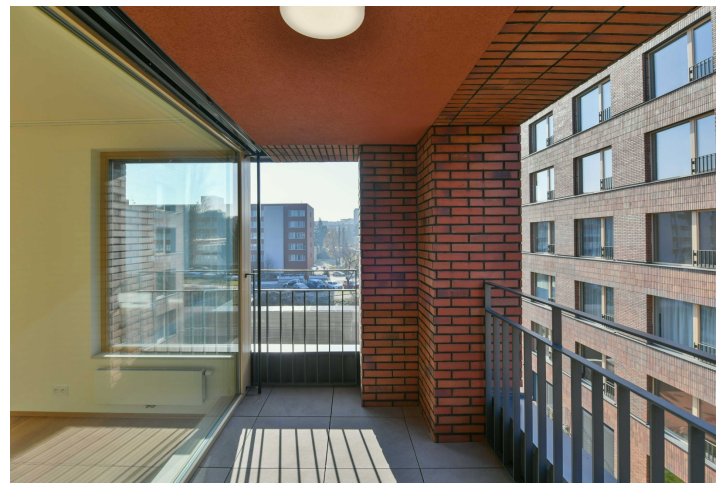
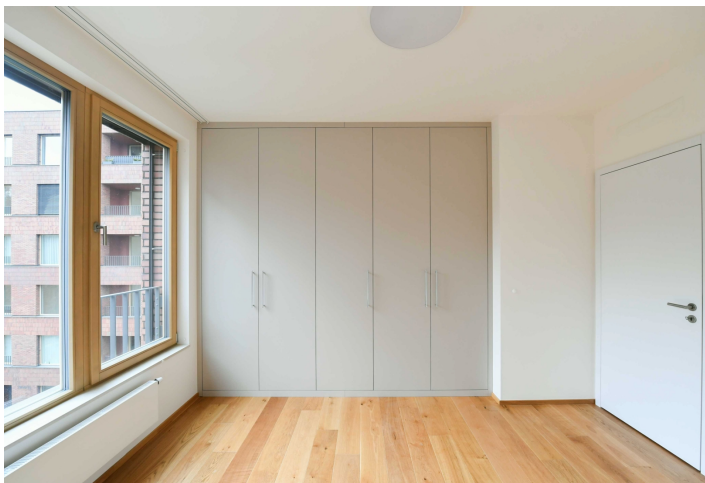




Apartment Two-bedroom (3+kk)

Rented

89.2 m², Prague 6, Dejvice, Pod Juliskou





Apartment Two-bedroom (3+kk)

Rented

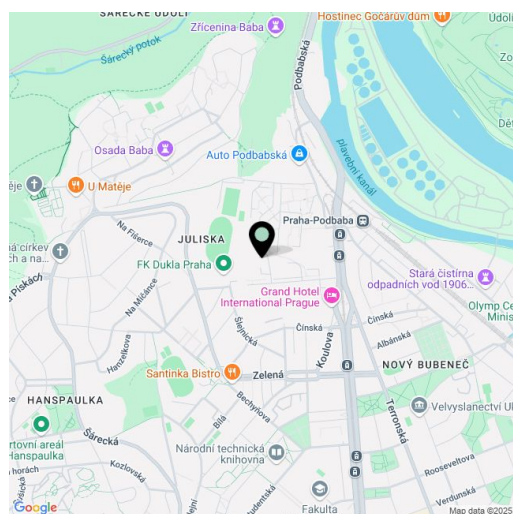
89.2 m², Prague 6, Dejvice, Pod Juliskou

| | |
|------------------|--|
| Total area | 96 m ² |
| Floor area* | 89 m ² |
| Terrace | 7 m ² |
| Parking | Garage parking. |
| Garage | Yes |
| Cellar | Yes |
| Service price | Monthly deposit for services, water, and heating: CZK 5,500 for two persons. Electricity is billed separately. |
| PENB | B |
| Reference number | 107254 |
| Available from | Immediately |

Benefiting from a terrace, this brand-new unfurnished apartment is on the 3rd floor of the newly built Juliska Residence project with underground parking and a private courtyard garden. Nicely located in a pretty natural park-like area under the Baba neighborhood, with full amenities and services in close vicinity. Within quick reach of the Vltava riverbank, Šárecké Valley, and Stromovka Park, a few short tram or bus stops from the Dejvická metro station (5 min. to the city center). Conveniently located for the airport and numerous Prague 6 international schools.

The interior features a living room with a fully fitted open plan kitchen and **terrace** access, 2 bedrooms facing the green courtyard, a bathroom (bathtub, walk-in shower, toilet, underfloor heating), a separate toilet with a bidet shower, a large storage/utility room, and an entrance hall with a built-in wardrobe.

Hardwood floors, tiles, large windows, built-in wardrobes in one bedroom, automatic exterior blinds, central heating, dishwasher, induction stove, extractor hood, microwave oven, electric oven, fridge with freezer, **cellar**. A spacious **garage parking** space with a **charging station for electric cars** is included in the rent.



* Area of the unit according to the Civil Code. The area consists of the sum total area of the entire unit bounded by perimeter walls.