



Apartment Three-bedroom (4+kk)

Rented

143 m², Prague 1, Nové Město, Křemencova





Apartment Three-bedroom (4+kk)

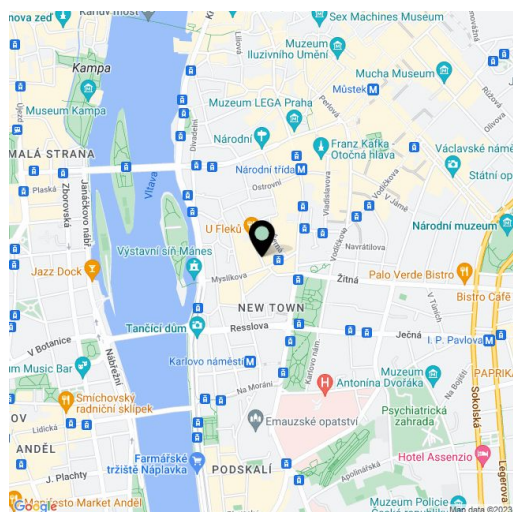
Rented143 m², Prague 1, Nové Město, Křemencova

Total area	143 m ²
Parking	Garage parking at CZK 5000 per month.
Garage	Yes
Cellar	-
PENB	D
Reference number	10732
Available from	Immediately

High standard air-conditioned 3-bedroom 2-bathroom flat on the third floor of a completely refurbished residence with a lift, reception, preserved original features, green atrium, camera system and on-site parking. Conveniently located for shopping, bars and restaurants, within easy reach of major public transportation links (trams, metro). Quiet street in the center of Prague, a short walk from Karlovo náměstí Square.

The interior features a spacious living room with a fully integrated kitchen and dining area plus a large pantry, master bedroom with a walk-in closet and an en-suite bathroom (tub, shower, double sink, toilet), bedroom with a shower bathroom, third bedroom, laundry room, guest toilet / utility room, and an entry hall with built-in wardrobes.

Oak wood floors, tiles, large windows, security entry door, roller blinds, washer, dryer, quality kitchen appliances, gas boiler, central switch, alarm. On-site property manager. Garage parking at CZK 5000 per month. Common building charges CZK 3500 per month. Utilities are billed separately.



* Area of the unit according to the Civil Code. The area consists of the sum total area of the entire unit bounded by perimeter walls.



Apartment Three-bedroom (4+kk)

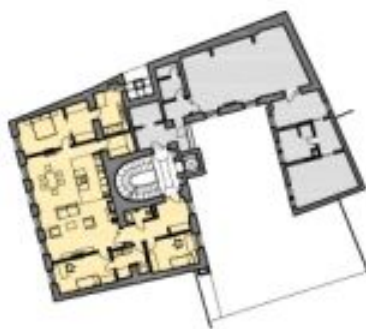
Rented

143 m², Prague 1, Nové Město, Křemencova

BYT 8



1 : 100 / A4
4.NP



Bytová jednotka			BYT 8
Tabulka místností			
Č.m.	Název místnosti	Plocha	
4.1.01	Předstí	13,7 m ²	
4.1.02	Prázdná	11,6 m ²	
4.1.03	Koupelna + WC	8,6 m ²	
4.1.04	WC	2,8 m ²	
4.1.05	Pokoj	13,9 m ²	
4.1.06	Obývací pokoj + KK	59,3 m ²	
4.1.07	Pokoj	13,4 m ²	
4.1.08	Komora	4,7 m ²	
4.1.09	Koupelna + WC	9,7 m ²	
4.1.10	Šatna	7,2 m ²	
Celkem			142,8 m ²
Projekt			SD Křemencova, Praha 1
Datum			01 / 2013