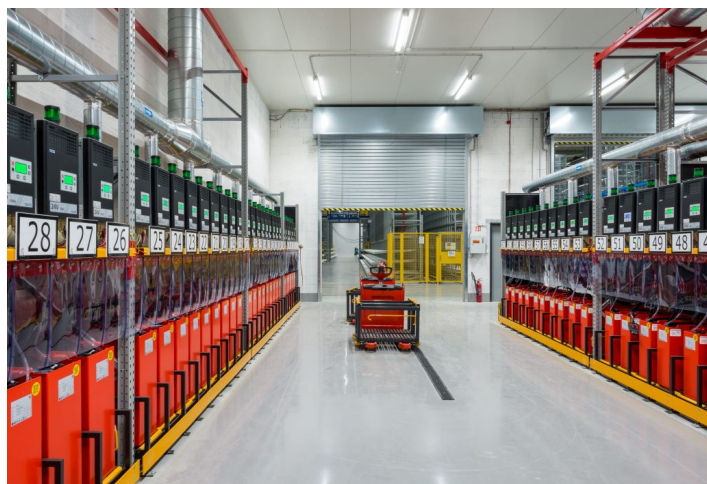




Warehouse space

11 198 m², Mělník, Kozomín, Kozomín

Ask for price





Warehouse space

11 198 m², Mělník, Kozomín, Kozomín

[Ask for price](#)

Total area	11 198 m ²
Available area for rent	11 198 m ²
Ceiling height	10.5 m
Floor loading capacity	5 t/m ²
Column grid structure	—
Structure	Reinforced concrete structure
PENB	G
Reference number	107518

11,198 sq.m. of warehouse, industrial and office space for lease in the industrial area situated approx. 20 km north of Prague. The premises are suitable for industrial centers and light manufacturing, offer a high standard of equipment, and can be designed based on specific requests and requirements. Thanks to its location the park is suitable for domestic and international distribution.

Location:

The park is strategically located in the vicinity of the D8 highway in the direction of Prague/Dresden. Easy connection with the center of Prague, international Václav Havel Airport Prague and with the border of Germany. Good accessibility by public transport.

Features and Services:

- Flexible units (storage / office / light production / showroom)
- Onsite property management
- 24/7 security service and CCTV
- Park maintenance
- Sufficient parking space
- High standard of building

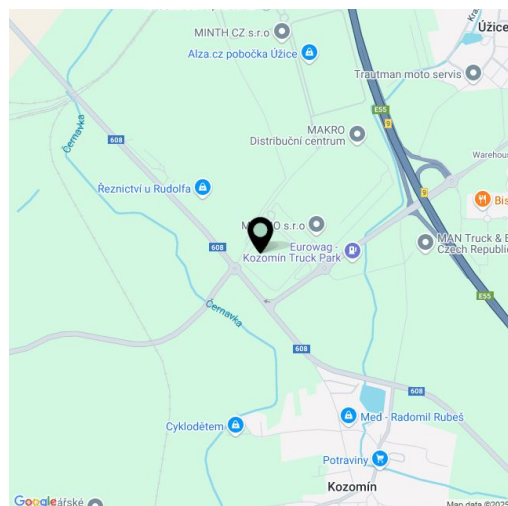
Industrial/Warehouse space:

- 12x Loading docks
- 3 x Drive in units
- Dimension of entrance gate 4 x 4,5 m
- Floor loading capacity 5 T/sq.m
- Clear height 10,5 m
- Column grid structure 12x24 m
- LED Light
- Sprinkler system
- Utility connections (water, sewage, gas, electricity)

Office:

- Turn key office
- Clear height 2,75 m
- Air-conditioning
- External blinds

Lessee pays no commission.





Warehouse space

Ask for price

11 198 m², Mělník, Kozomín, Kozomín





Warehouse space

Ask for price

11 198 m², Mělník, Kozomín, Kozomín

Postaveno

Postaveno - k dispozici

Plánováno

