



Warehouse space

4 650 m², Chomutov, Kadaň, Královský Vrch

Ask for price





Warehouse space

4 650 m², Chomutov, Kadaň, Královský Vrch

Ask for price

Total area	4 650 m ²
Available area for rent	4 650 m ²
Ceiling height	10.5 m
Floor loading capacity	5 t/m ²
Column grid structure	—
Structure	Reinforced concrete structure
PENB	G
Reference number	107601

4,650 sq m of Class-A warehouse and office space for lease near the German border. The premises are suitable for logistics centers and light manufacturing, offer a high standard of equipment, and can be designed based on specific requests and requirements. Available within 10 months after signing the contract.

Location:

Park is located less than 1/2 hour to the German border, situated nearby Chomutov. Park is situated in an established industrial zone.

Features and Services:

- Flexible units (storage / office / light production / showroom)
- Onsite property management
- 24/7 security service and CCTV
- Park maintenance
- Sufficient parking space
- High standard of building

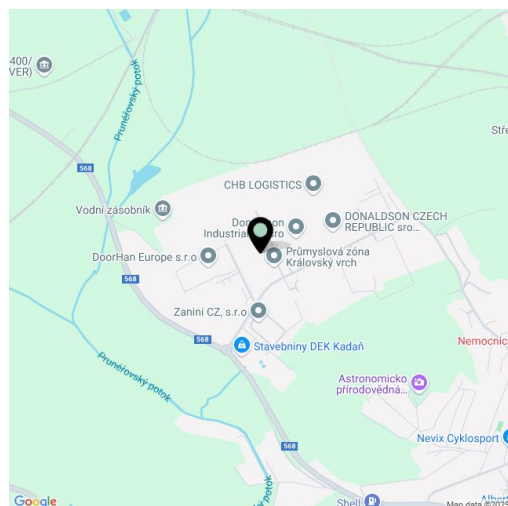
Warehouse/Industrial space:

- 1 hydraulic ramp at about 600 m²
- Min. 1 direct entry to the unit
- Dimension of entrance gate 4x4,5 m
- Floor loading capacity 5 T/sq m
- Clear height 10,5 m
- Column grid structure 12x24 m
- LED Light
- Sprinkler system
- Utility connections (water, sewage, gas, electricity)

Office:

- Turn key office
- Clear height 2,75 m
- Air-conditioning
- External blinds

Lessee pays no commission.





Warehouse space

4 650 m², Chomutov, Kadaň, Královský Vrch

Ask for price

