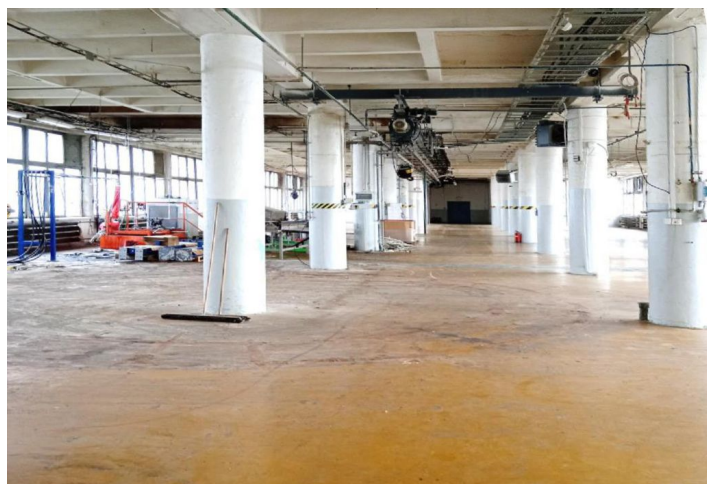




Industrial space

973 m², Břeclav, Břeclav, Mládežnická

Ask for price





Industrial space

973 m², Břeclav, Břeclav, Mládežnická

Ask for price

Total area	973 m ²
Available area for rent	973 m ²
Ceiling height	4 m
Floor loading capacity	0.55 t/m ²
Column grid structure	—
Structure	Reinforced concrete structure
PENB	G
Reference number	107742

973 m² of industrial, warehouse and office premises for lease in Břeclav. The premises are suitable for light manufacturing, logistics and storage.

Location:

The park is located in the southeastern part of the city of Břeclav (6.5 km from exit 48 of the D2 highway for cars up to 3.4 m high and 22 km for cars over 3.4 m high).

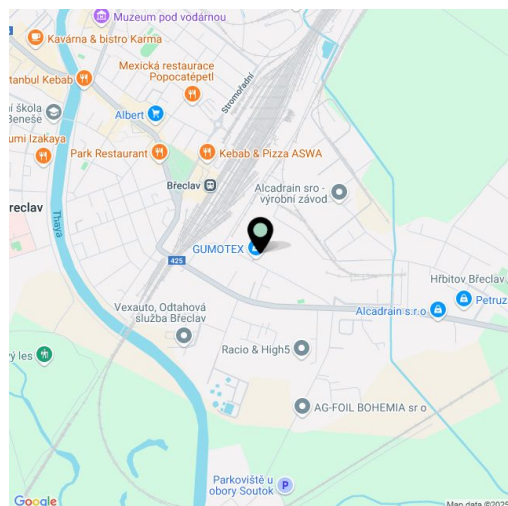
Equipment and services:

- The area is accessible 24/7 with permanent security
- Utility networks (sewerage, water supply), electrical network 230 V/400 V
- The area is gasified
- Outdoor handling areas for unloading and loading
- Possibility of parking at the object
- Excellent accessibility for employees by train and bus

Warehouse/Industrial space:

- Detached four-storey building B12
- Warehouse/industrial space in vacant floors of approx. 973 - 1250 m²/floor
- Social facilities on the mezzanine floor with an area of 279,3 m²
- Floor loading capacity 550 kg/m²
- Freight elevator with a capacity of 6 t, dimensions 2,5 x 2,55 x 4 m (h x w x d)
- EPS installed

Lessee pays no commission.





Orientační rozměry haly 1.NP

plocha k pronájmu orientačně 973 m²

