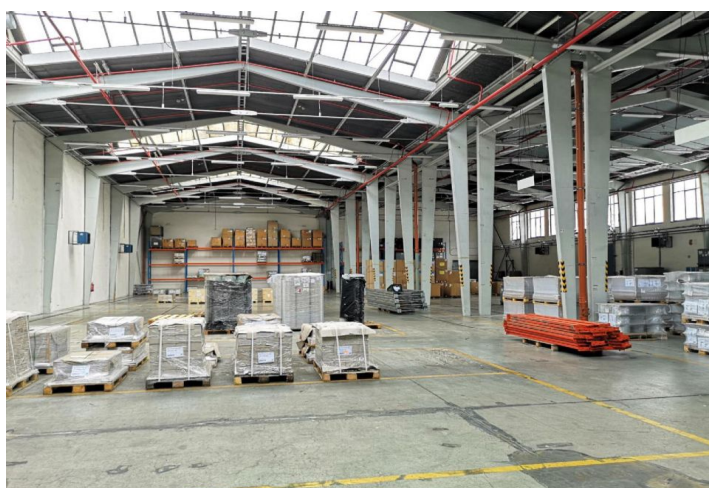




## Industrial space

1578 m<sup>2</sup>, Břeclav, Břeclav, Mládežnická

Ask for price





## Industrial space

1 578 m<sup>2</sup>, Břeclav, Břeclav, Mládežnická

**Ask for price**

<b>Total area</b>	1 578 m <sup>2</sup>
<b>Available area for rent</b>	1 578 m <sup>2</sup>
<b>Ceiling height</b>	6.5 m
<b>Floor loading capacity</b>	5 t/m <sup>2</sup>
<b>Column grid structure</b>	—
<b>Structure</b>	Reinforced concrete structure
<b>PENB</b>	G
<b>Reference number</b>	107750

**1,578 m<sup>2</sup>** of industrial, warehouse and office premises for lease in Břeclav. The premises are suitable for light production, logistics and storage.

### Location:

The park is located in the southeastern part of the city of Břeclav (6.5 km from exit 48 of the D2 highway for cars up to 3.4 m high and 22 km for cars over 3.4 m high).

### Equipment and services:

- The area is accessible 24/7 with permanent security
- Utility networks (sewerage, water supply), electrical network 230 V/400 V
- The area is gasified
- Outdoor handling areas for unloading and loading
- Foldable loading docks
- Possibility of parking at the object
- Excellent accessibility for employees by train and bus

### Industrial/warehouse space:

- 3 separate ships with a total area of 3 164 m<sup>2</sup>
- South ship with an area of 1,578 m<sup>2</sup> with a loading ramp and leveling bridges, sanitary facilities on two floors
- North ship of 793 m<sup>2</sup> with cargo ramp
- East ship 793 m<sup>2</sup> with cargo ramp
- Clear height 6,5 m
- Floor loading capacity 5t/m<sup>2</sup>
- Freight elevator with a capacity of 6 t, dimensions 2.5 x 2.55 x 4 m (h x w x d)
- Sprinklers

Lessee pays no commission.

