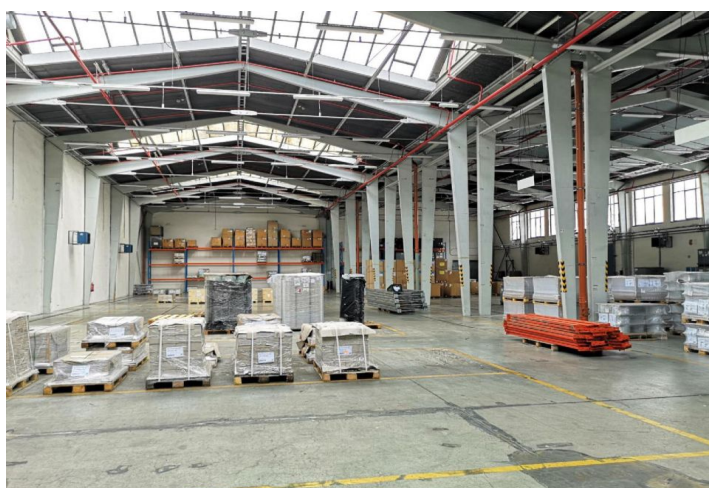




Industrial space

793 m², Břeclav, Břeclav, Mládežnická

Ask for price





Industrial space

793 m², Břeclav, Břeclav, Mládežnická

Ask for price

Total area	793 m ²
Available area for rent	793 m ²
Ceiling height	6.5 m
Floor loading capacity	5 t/m ²
Column grid structure	—
Structure	Reinforced concrete structure
PENB	G
Reference number	107751

793 m² of industrial, warehouse and office premises for lease in Břeclav. The premises are suitable for light production, logistics and storage.

Location:

The park is located in the southeastern part of the city of Břeclav (6.5 km from exit 48 of the D2 highway for cars up to 3.4 m high and 22 km for cars over 3.4 m high).

Equipment and services:

- The area is accessible 24/7 with permanent security
- Utility networks (sewerage, water supply), electrical network 230 V/400 V
- The area is gasified
- Outdoor handling areas for unloading and loading
- Foldable loading docks
- Possibility of parking at the object
- Excellent accessibility for employees by train and bus

Industrial/warehouse space:

- 3 separate ships with a total area of 3 164 m²
- South ship with an area of 1,578 m² with a loading ramp and leveling bridges, sanitary facilities on two floors
- North ship of 793 m² with cargo ramp
- East ship 793 m² with cargo ramp
- Clear height 6,5 m
- Floor loading capacity 5t/m²
- Freight elevator with a capacity of 6 t, dimensions 2.5 x 2.55 x 4 m (h x w x d)
- Sprinklers

Lessee pays no commission.

