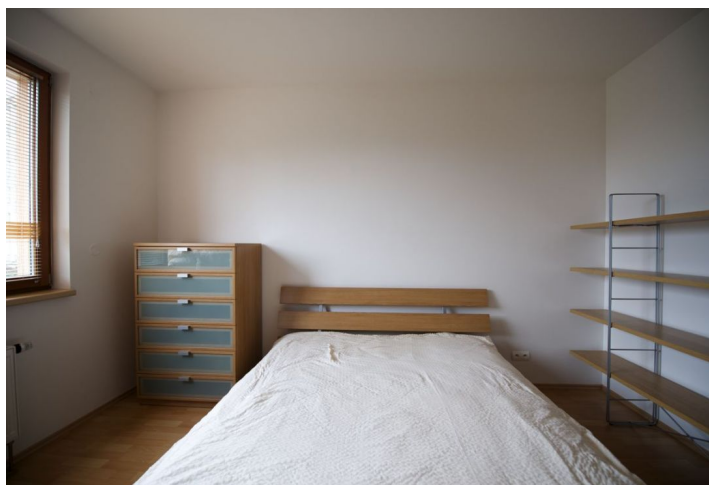




Apartment Two-bedroom (3+kk)

Rented

83 m², Praha 6, Břevnov, Patočkova





Apartment Two-bedroom (3+kk)

Rented

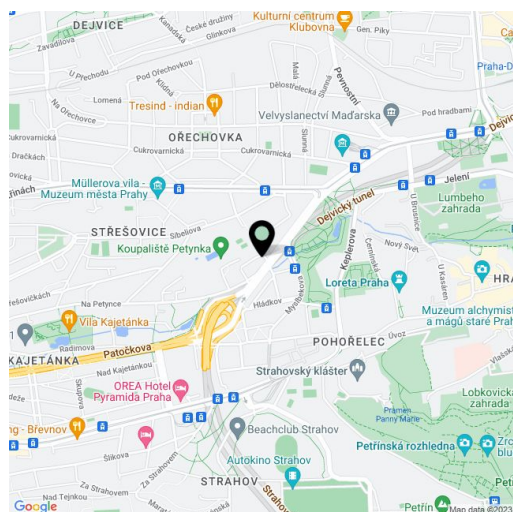
83 m², Praha 6, Břevnov, Patočkova

Total area	83 m ²
Parking	Garage parking available at extra CZK 1900/mo.
Garage	Yes
Cellar	-
PENB	G
Reference number	10809
Available from	Immediately

Fully furnished 2-bedroom flat with a balcony situated on the 1st floor with lift in a newly built residential complex (2003), located a short walk from the Prague Castle, close to the Břevnovský Monastery.

This flat has a living room with fully fitted open plan kitchen, 2 bedrooms, and bathroom with bath tub.

Features include "floating" parquet floors, built-in wardrobes, washer, dishwasher, ceramic cooktop, video intercom, telephone line, Internet, and satellite connection. Good transportation connections (a few bus stops to Hradčanská and Dejvická metro). Garage parking available at extra CZK 1900/mo. Monthly deposit for services and utilities CZK 4500.



* Area of the unit according to the Civil Code. The area consists of the sum total area of the entire unit bounded by perimeter walls.



Apartment Two-bedroom (3+kk)

Rented

83 m², Praha 6, Břevnov, Patočkova

