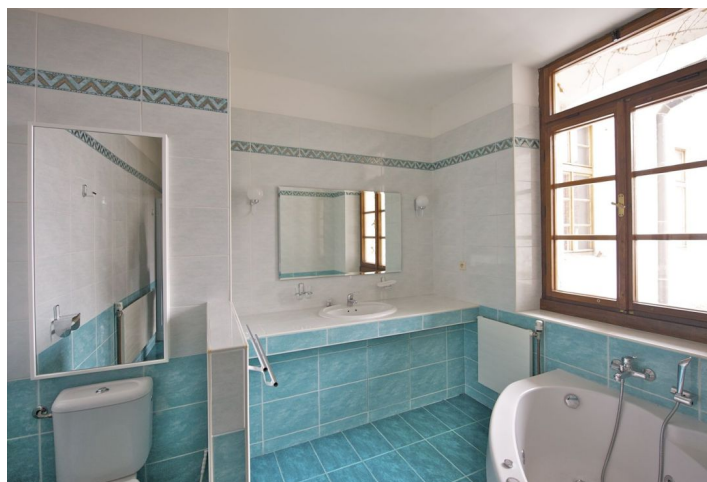




## Apartment One-bedroom (2+kk)

Rented

81 m<sup>2</sup>, Praha 1, Staré Město, Betlémské náměstí





## Apartment One-bedroom (2+kk)

Rented

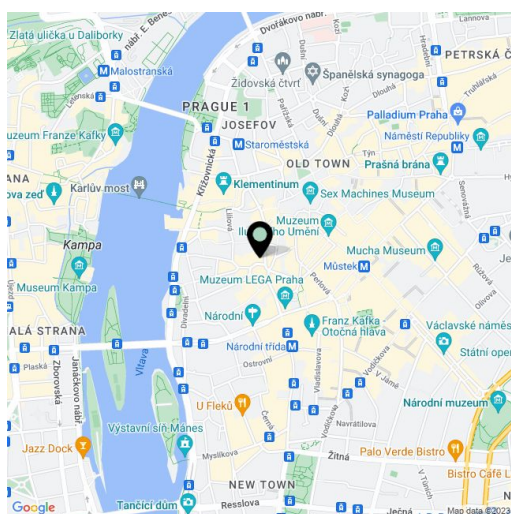
81 m<sup>2</sup>, Praha 1, Staré Město, Betlémské náměstí

Total area	81 m <sup>2</sup>
Parking	Parking possible in the courtyard for CZK 3,000/month.
Cellar	-
PENB	G
Reference number	10911
Available from	Immediately

Centrally located 1-bedroom flat on the top 3rd floor with lift in this quiet courtyard of a renovated historic building with views of the gothic towers of Betlémská Chapel. Unique location moments from the Charles Bridge and Old Town Square.

The interior features a fully fitted kitchen open to the living room, one bedroom, bright windowed bathroom (massage bath, shower, sink, toilet), walk-in closet, guest toilet, and entry hall with built-in storage.

Other features include parquet floors, large windows, dishwasher. Close to trams and metro, a 5 minute walk to Wenceslas Square. Common building charges and deposit for utilities CZK 4,500/month.



\* Area of the unit according to the Civil Code. The area consists of the sum total area of the entire unit bounded by perimeter walls.