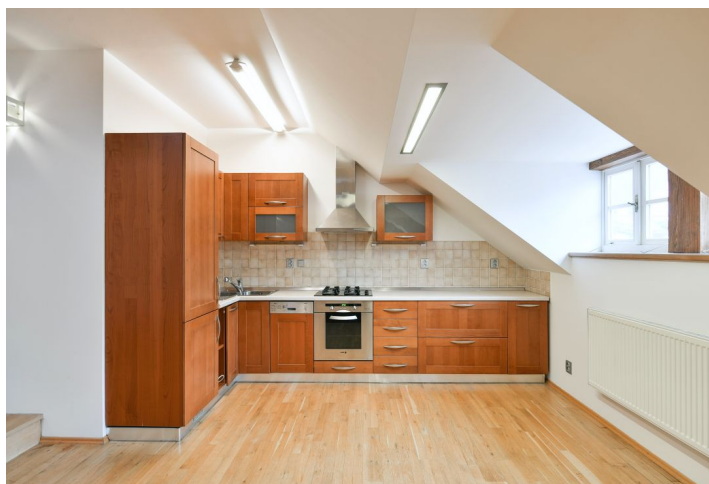




Apartment Three-bedroom (4+kk)

Rented

133 m², Prague 1, Malá Strana, Újezd





Apartment Three-bedroom (4+kk)

Rented

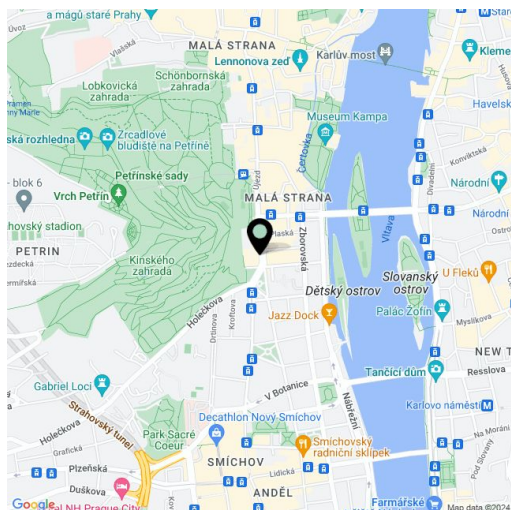
133 m², Prague 1, Malá Strana, Újezd

Total area	133 m ²
Parking	-
Cellar	-
Service price	Deposit for common building charges and water CZK 800/person/month. Gas and electricity - transferred to the tenant.
PENB	G
Reference number	11022
Available from	Immediately

Attic apartment with 2 bathrooms situated on the 3rd top floor of a charming historic building with no elevator in picturesque Malá Strana below Petřín Hill. Located close to the Vltava embankment, Kampa Park, and Prague Castle. A tram stop is moments away, quick connections to the Malostranská, Anděl, and Národní třída metro stations.

The unit has a fully fitted and equipped kitchen open onto the living room, three bedrooms, two bathrooms (bathtub, bidet, toilet/walk-in shower, toilet), and an entrance hall with built-in wardrobes.

Features include hardwood parquet and tile floors, built-in wardrobes, gas boiler, washer, dishwasher, alarm, and satellite TV connection.



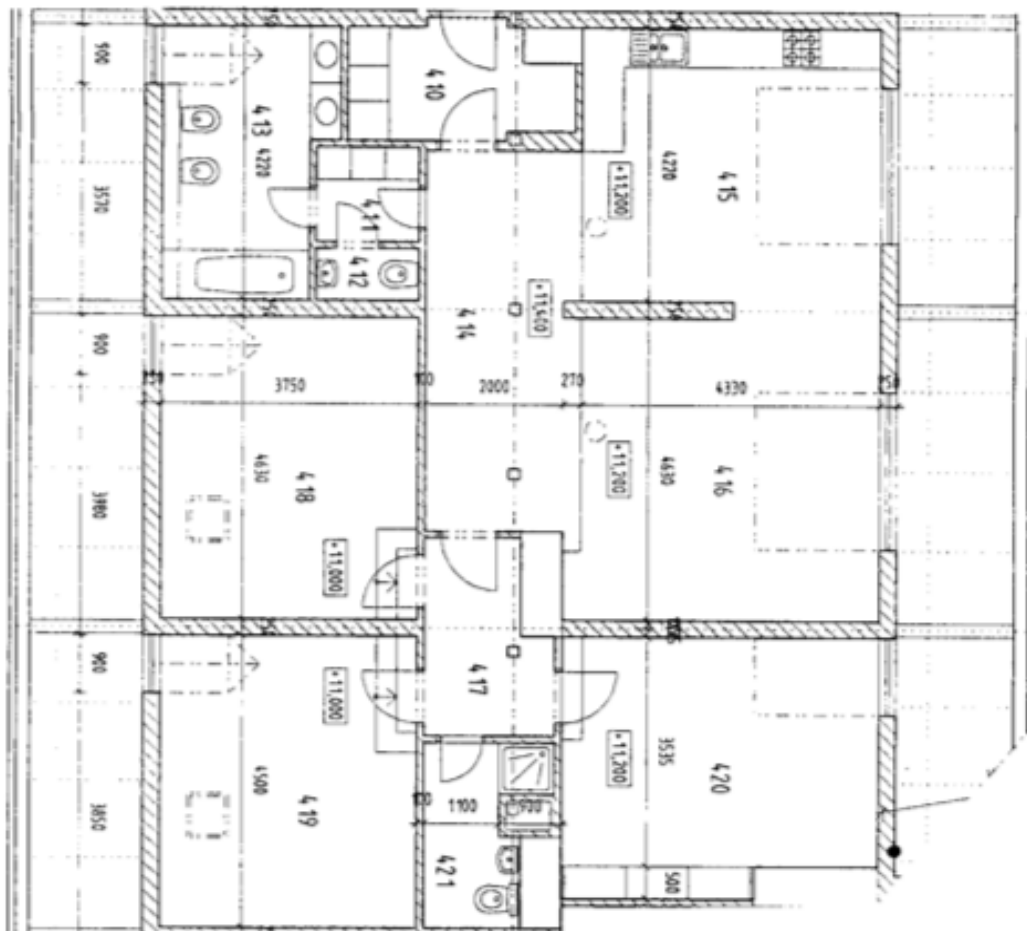
* Size of the unit according to the Housing Act.
The area consists of the sum total of the internal area of every room.



Apartment Three-bedroom (4+kk)

Rented

133 m², Prague 1, Malá Strana, Újezd



4.10	predsírň	5,40
4.11	chodba	2,20
4.12	wc	1,20
4.13	koupelna	9,85
4.14	baló	13,20
4.15	kuchyn'	18,55
4.16	obývací pokoj	20,70
4.17	chodba	5,05
4.18	ložnice	17,35
4.19	ložnice	16,85
4.20	ložnice	17,65
4.21	koupelna	4,20