



## House Four-bedroom (5+kk)

Rented

200 m<sup>2</sup>, Prague 6, Střešovice, Západní





## House Four-bedroom (5+kk)

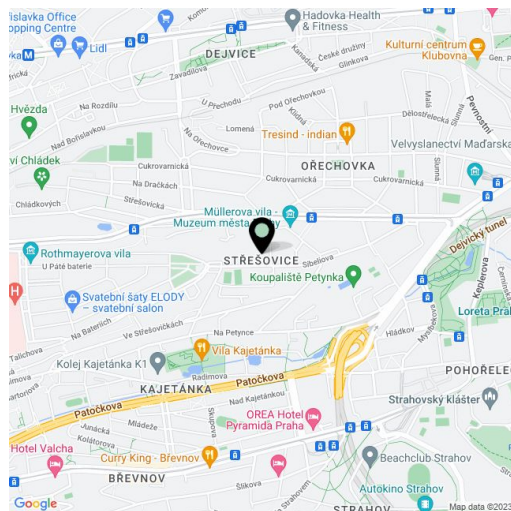
**Rented**200 m<sup>2</sup>, Prague 6, Střešovice, Západní

Plot	389 m <sup>2</sup>
Foot print	100 m <sup>2</sup>
Garden	289 m <sup>2</sup>
Parking	Parking on the plot.
Cellar	Yes
PENB	G
Reference number	11173
Available from	Immediately

**Renovated 4-bedroom 3-bathroom corner townhouse with a full basement and a private garden, in the prestigious green residential neighborhood of Ořechovka. Quiet location with quick connection to the city center, the international schools and the airport, within walking distance of the Prague Castle. Minutes from a tram stop, a few stops from Dejvická and Hradčanská metro stations.**

The ground floor offers a living room with a fully fitted open kitchen, shower bathroom with toilet, entrance hall, and a back entrance to the garden. There are two bedrooms and a bathroom with toilet on the first and second floors each, plus a walk-in closet / storage room. The basement floor includes a family room with a **slow burning stove** (can be used as a guest bedroom), toilet, and storage space.

Green views, **solid wood parquet floors**, heated tiles on the ground floor, gas boiler, washing machine, dryer. Two **parking** spaces on the plot. Utilities approx. CZK 5,000 -6,000 per month. **UNFURNISHED**. Available from July 10th, 2021.



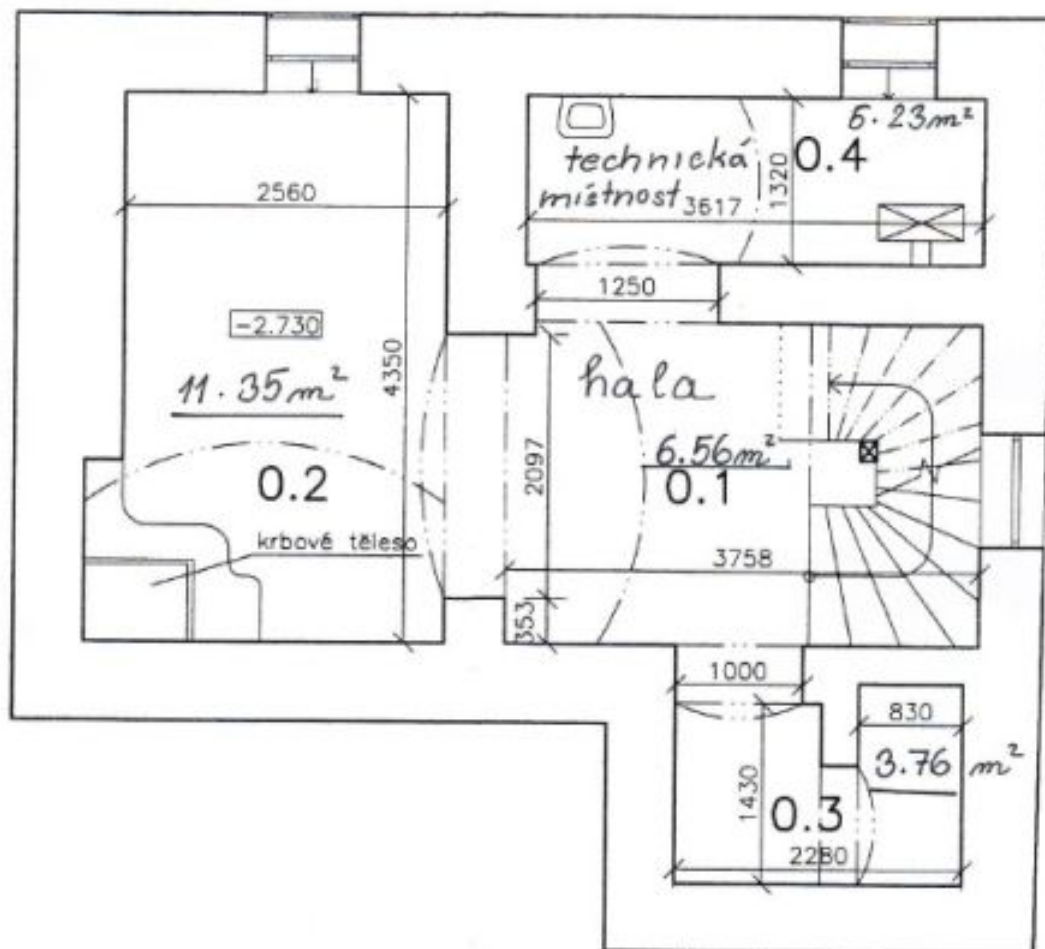


# House Four-bedroom (5+kk)

Rented

200 m<sup>2</sup>, Prague 6, Střešovice, Zápvní

suterén



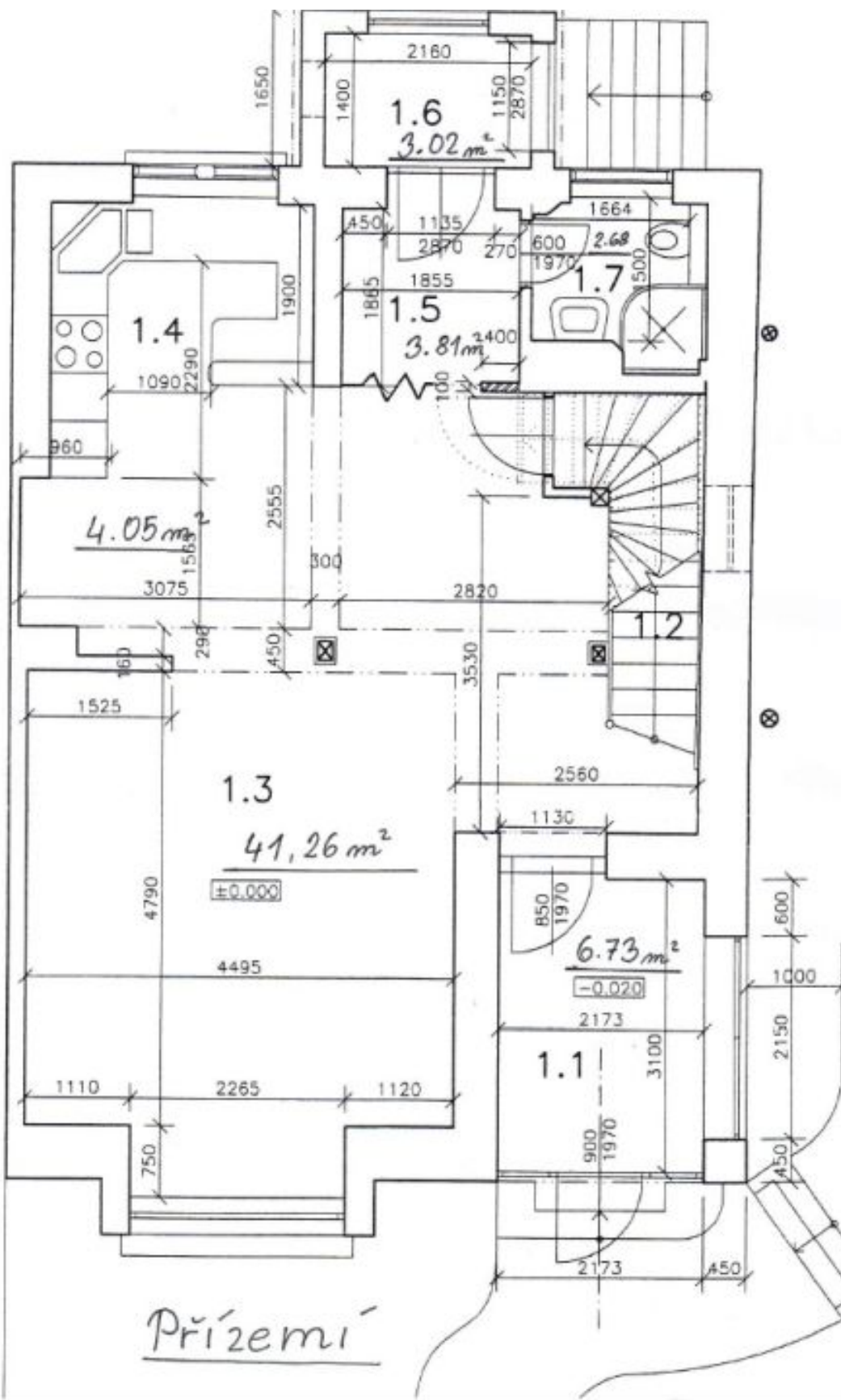




# House Four-bedroom (5+kk)

Rented

200 m<sup>2</sup>, Prague 6, Střešovice, Západní

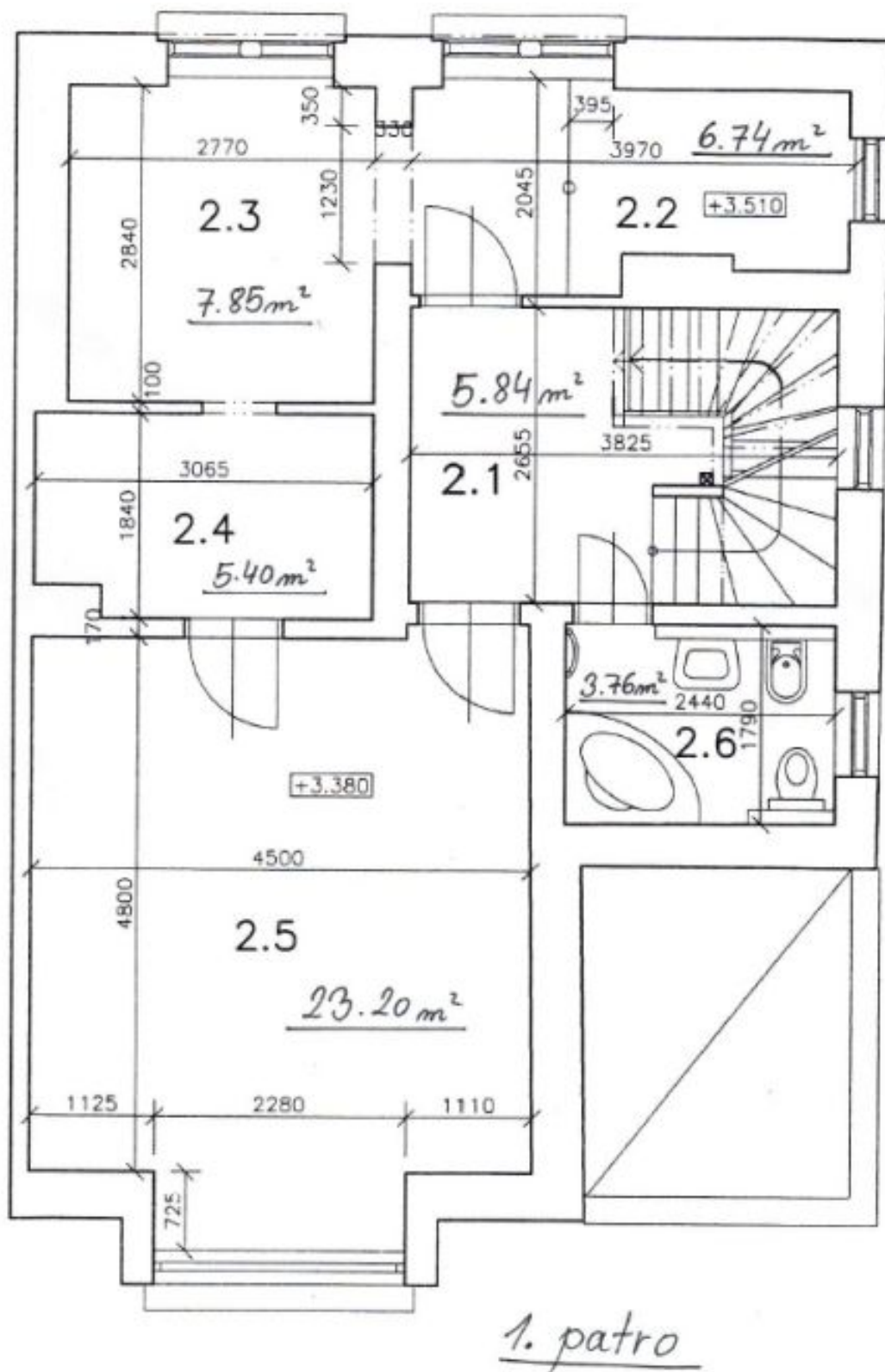




# House Four-bedroom (5+kk)

Rented

200 m<sup>2</sup>, Prague 6, Střešovice, Západní







## House Four-bedroom (5+kk)

Rented

200 m<sup>2</sup>, Prague 6, Střešovice, Západní

