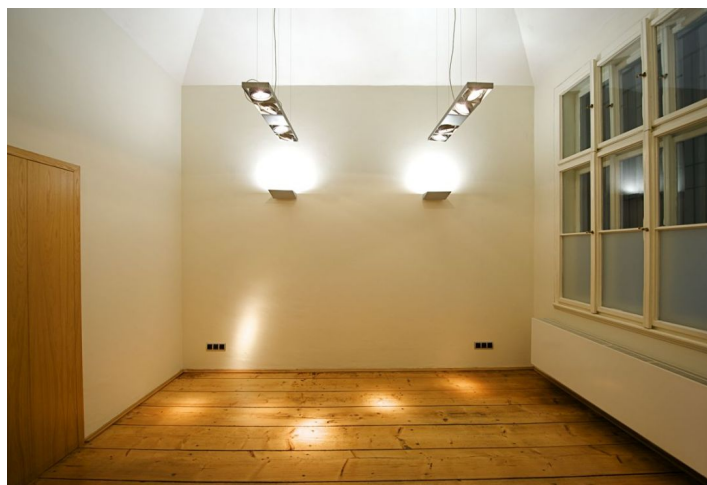




Office space

Prague 5, Smíchov, Janáčkovo nábřeží

Rented





Prague 5, Smíchov, Janáčkovo nábřeží

| | |
|------------------|-----------------------------------|
| Service price | 30 CZK monthly per m ² |
| Available area | 135 m ² |
| Cellar | - |
| Parking | - |
| PENB | G |
| Reference number | 11362 |

Bright renovated office space for lease on the raised ground floor of a representative building with an impressive entrance near to the Vltava river embankment. The space is divided into 4 rooms overlooking the river. There is also an entrance hall, kitchen, 2 toilets and a small storage room. The conference room is separated from the rest of the space by a glass sliding door. The space is secured with high quality security equipment, security doors and shutters on all windows facing the street.

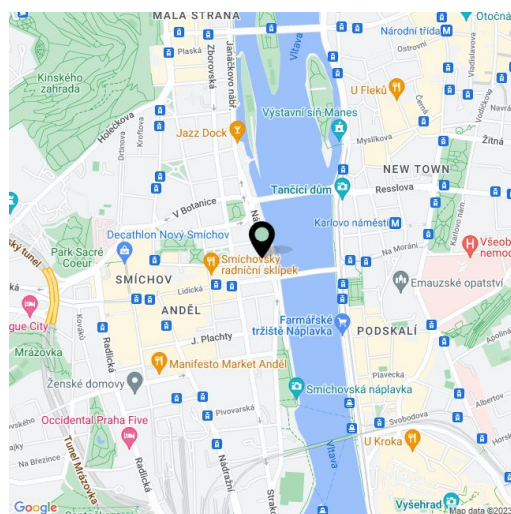
Location:

Great accessibility by public transport. Tram stops Újezd or Švandovo divadlo are by walking distance of a few minutes away from the building. All civic amenities are nearby.

Features and Services:

- Security doors
- Shutters
- Internet
- Telephone connection
- Openable windows
- Social facilities

Rental and service charges listed without VAT. Lessee pays no commission.





Office space

Prague 5, Smíchov, Janáčkovo nábřeží

Rented

