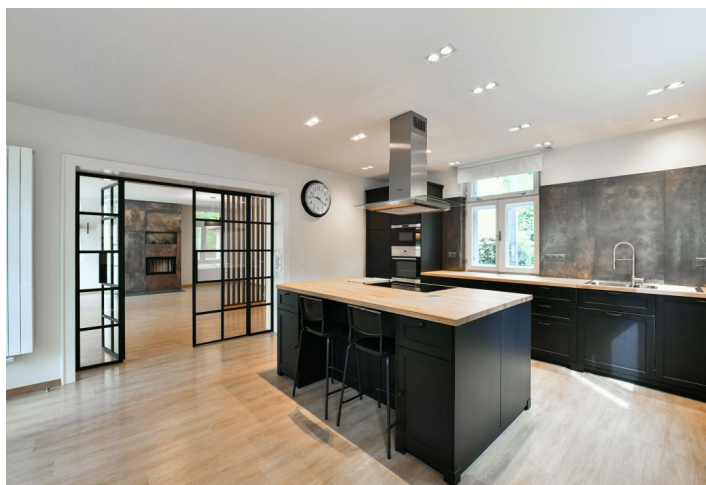




House Four-bedroom (5+1)

226 m², Prague 6, Dejvice, V Šáreckém údolí

Rented





House Four-bedroom (5+1)

Rented226 m², Prague 6, Dejvice, V Šáreckém údolí

Plot	899 m ²
Foot print	200 m ²
Garden	699 m ²
Parking	Parking on the plot.
Cellar	-
PENB	G
Reference number	11369
Available from	Immediately

This comfortable semi-detached house with a front garden and a charming brook that is part of the property is located in a tranquil residential area in the wonderful Šárecké Valley nature preserve surrounded by green hills and a peaceful countryside, with quick connections to the airport and the international schools in Prague 6 incl. ISP and Riverside, also only a few bus stops away from the Dejvická metro station.

The ground floor features a spacious living room with a **fireplace** and French doors leading to the terrace and garden, a fully fitted kitchen and dining area, a dressing room, a guest toilet, a hall, and a utility area. The upper floor includes a master bedroom with a fitted walk-in closet and bathroom (shower, toilet), a second bedroom with a bathroom (shower, toilet), two additional bedrooms, a storage room, a family bathroom with a double sink, bathtub, bidet, and toilet, a closet, and a hall.

Vinyl floors, wooden staircase, bidet showers, alarm, garden house. The house also has a heat pump and a private well with drinking water which considerably decreases the cost of utilities. Parking is on the plot. An enclosed garden near the house can be used by the tenants. Suitable for children and barbecues. Utilities approx. CZK 10,000/month are billed separately. Available from July 1st, 2022.

