



Apartment One-bedroom (2+kk)

Rented

71 m², Prague 1, Staré Město, 28. října





Apartment One-bedroom (2+kk)

Rented

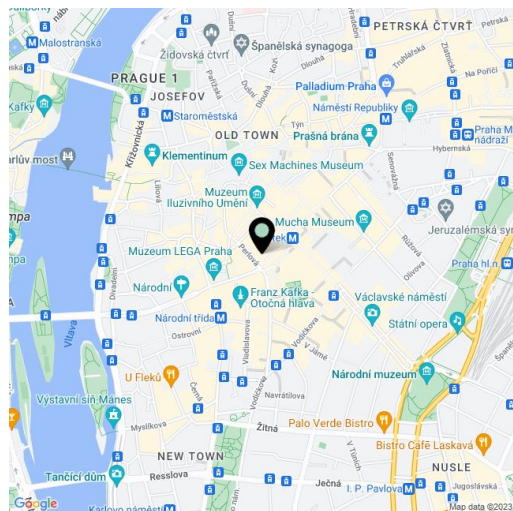
71 m², Prague 1, Staré Město, 28. října

Total area	77 m ²
Floor area*	71 m ²
Terrace	6 m ²
Parking	-
Cellar	-
PENB	G
Reference number	11403
Available from	Immediately

Fully furnished, air-conditioned 1-bedroom flat with a terrace facing the courtyard, situated on the third floor of a modern residential building with a lift. Prime city center location with full public amenities and instant access to Můstek metro station, lines A and B, as well as Wenceslas Square and the Franciscan garden.

The interior includes one bedroom with built-in wardrobes and an en-suite bathroom (bathtub, sink, bidet, toilet), a living room with a fully fitted open kitchen and access to the **covered terrace**, an additional toilet, and entrance hall with utility area.

Solid wood parquet floors, tiles, large windows, built-in wardrobes and storage, heated floor in the bathroom, gas boiler, washing machine, dishwasher, kitchenware, TV, video entry phone, alarm. Deposit for service charges and utilities CZK 5000 per month.



* Area of the unit according to the Civil Code. The area consists of the sum total area of the entire unit bounded by perimeter walls.

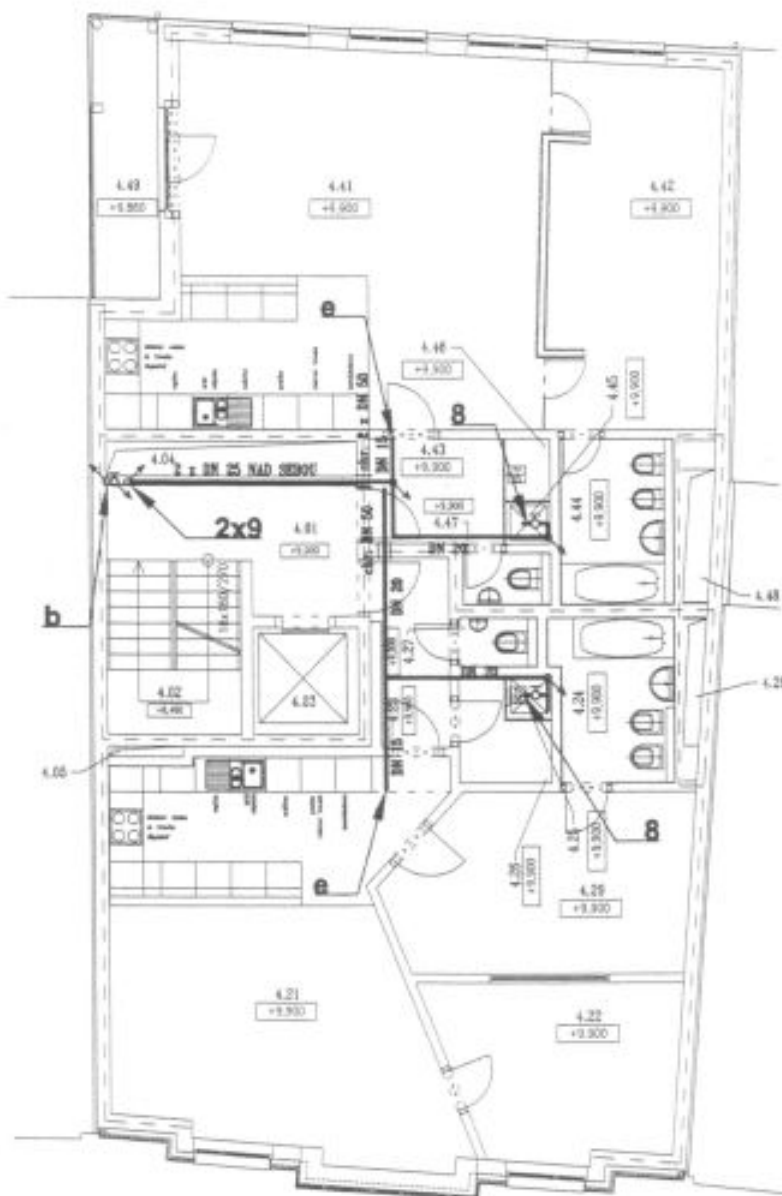


Apartment One-bedroom (2+kk)

Rented

71 m², Prague 1, Staré Město, 28. října

4 NP



LEGENDA MÍSTNOSTÍ

číslo místnosti	název místnosti	plocha (m ²)
4.01	podestě	7,78
4.02	schodiště	6,90
4.03	výšková šachta	3,33
4.04	instalační šachta	2,58
4.05	instalační šachta	0,23

4.21	obývací pokoj	35,74
4.22	ložnice	11,56
4.23	zábaví	4,11
4.24	koupelna	5,70
4.25	místnost kotle	0,56
4.26	šatna	2,26
4.27	WC	1,18
4.28	instalační šachta	0,92
4.29	pracovna	14,88

4.41	obývací pokoj	42,74
4.42	ložnice	16,32
4.43	zábaví	4,32
4.44	koupelna	5,40
4.45	místnost kotle	0,54
4.46	šatna	0,80
4.47	WC	1,27
4.48	instalační šachta	1,50
4.49	balkón	6,01