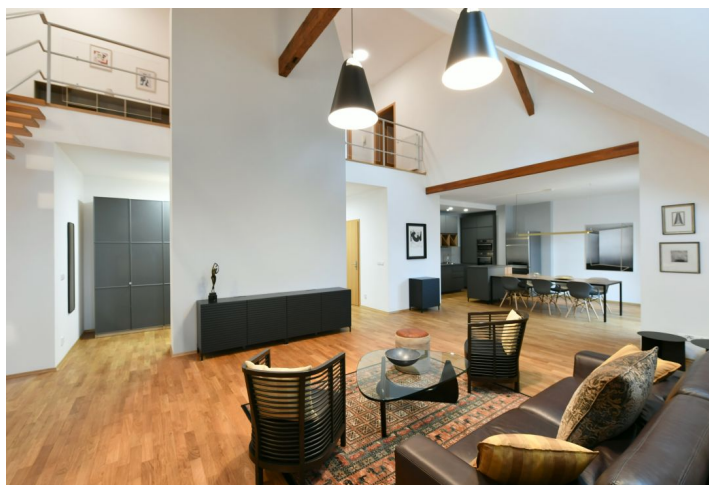




Apartment Three-bedroom (4+kk)

Rented

185 m², Prague 8, Karlín, Křížkova





Apartment Three-bedroom (4+kk)

Rented

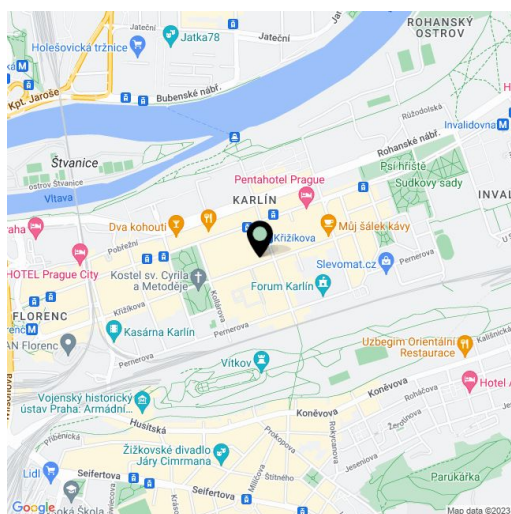
185 m², Prague 8, Karlín, Křižíkova

Total area	225 m ²
Floor area*	185 m ²
Terrace	40 m ²
Parking	-
Cellar	-
Service price	Common building charges CZK 800/person/month. Deposit for heating and water consumption approx. CZK 6,000/month. Electricity is billed separately.
PENB	G
Reference number	11645
Available from	Immediately

This reconstructed 3-bedroom 2-bathroom split-level apartment with 2 terraces on the 4th and 5th floors of an elegantly styled Art Nouveau building with an elevator is nicely located in the highly sought-after district of Prague 8 - Karlín, a minutes' walk from a tram stop and 5 minutes from the Křižíkova metro station. Within walking distance of the Karlín business center, great amenities, and a number of cafes, bistros, and restaurants. The city center is accessible within a few minutes by tram or metro. You can also use the nearby bike path along the Vltava River.

On the lower level the apartment comprises a spacious living room with a dining and living area, with a fully equipped contemporary open plan kitchen and access to the smaller terrace, a walk-in closet, a toilet, and an entry hall. On the upper level there are 3 bedrooms (one with en-suite bathroom (bathtub, toilet, bidet), a walk-in closet, and access to the large terrace). The upper level also includes a second bathroom (shower, toilet, bidet).

Oak parquet floors, air-conditioning, storage spaces, washer, dishwasher, alarm, wiring for cable/satellite, security cameras throughout the building, elevator



* Size of the unit according to the Housing Act.

The area consists of the sum total of the internal area of every room.



Apartment Three-bedroom (4+kk)

185 m², Prague 8, Karlín, Křížkova

Rented



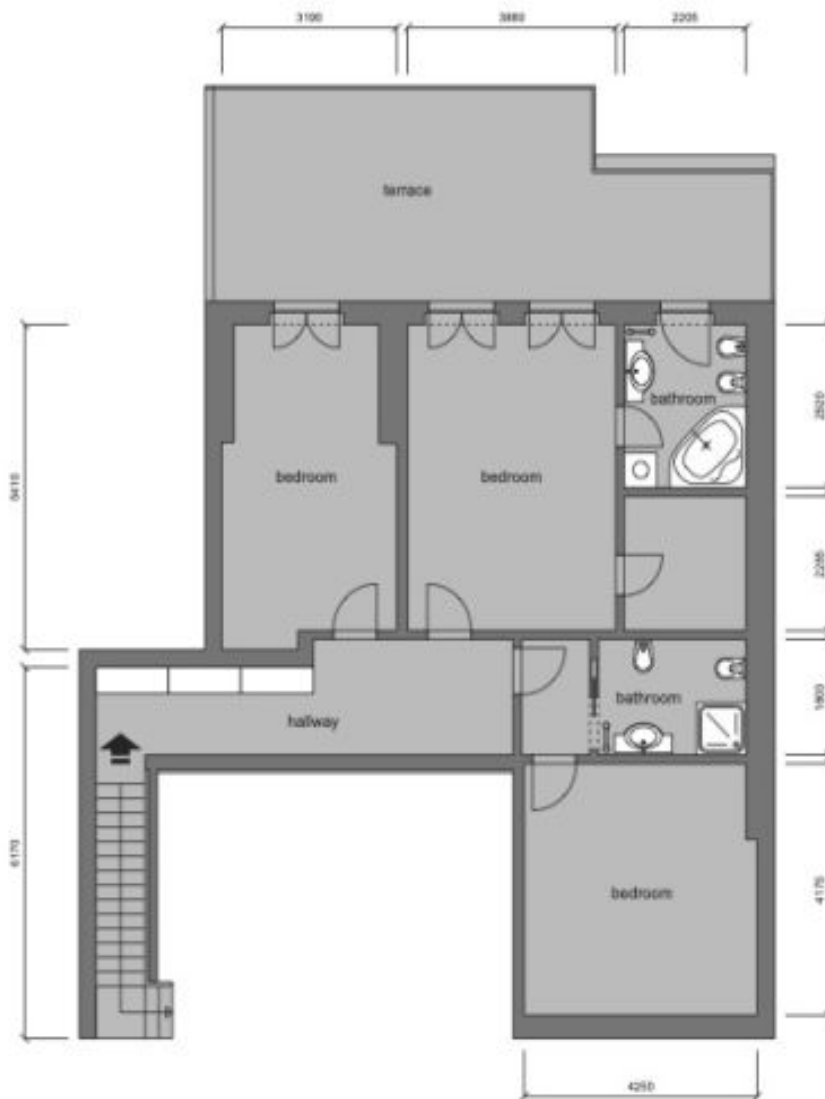
FLAT 16 (level 01)



Apartment Three-bedroom (4+kk)

185 m², Prague 8, Karlín, Křížkova

Rented



FLAT 16 (level 02)