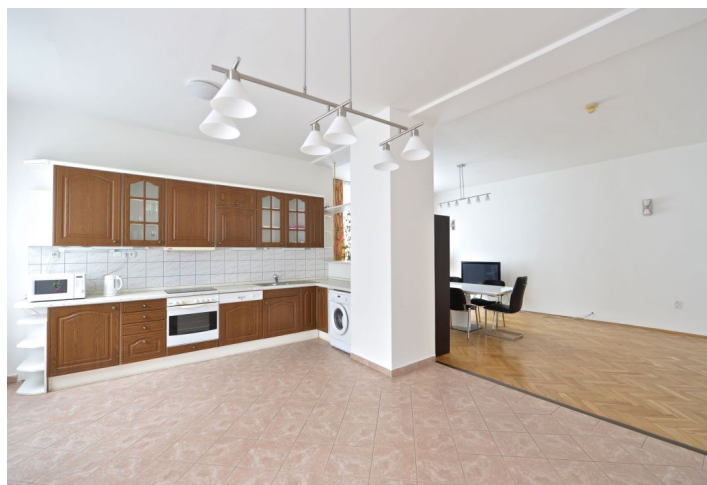




Apartment Two-bedroom (3+1)

Rented

165 m², Prague 8, Libeň, Pomezní





Apartment Two-bedroom (3+1)

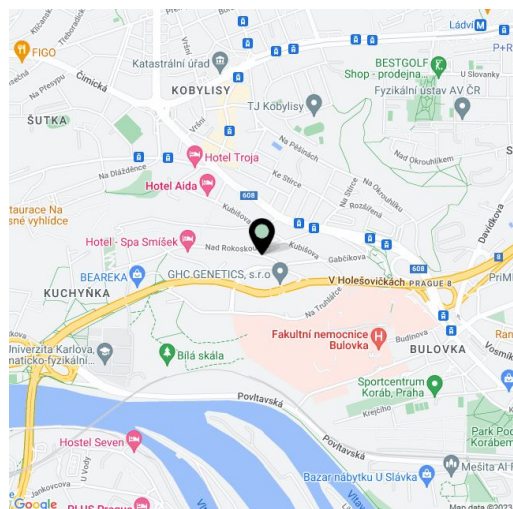
Rented165 m², Prague 8, Libeň, Pomezní

Total area	167 m ²
Floor area*	165 m ²
Balcony	2 m ²
Parking	Garage.
Garage	Yes
Cellar	-
PENB	G
Reference number	11666
Available from	Immediately

Furnished 2-bedroom 2-bathroom flat with a balcony and green views, situated on the second floor of a reconstructed villa from 1930's with a large shared garden (805 m²). Located in a quiet residential area, two short tram stops from Kobylisy metro station, minutes from a tram stop, and a short walk from the local outdoor swimming pool. Convenient to the natural reserve Havránka, Čimický háj and Velká Skála, area with very good public amenities incl. Šutka Aquapark, shopping, school, kindergarten, theaters, bank and restaurants. Convenient to Mladá Boleslav highway.

The flat includes a spacious fully fitted kitchen with dining area and a balcony, a walk-through living room (could be a guest bedroom or study), two bedrooms each with an en-suite bathroom (tub / walk-in shower, toilet), a guest toilet, and an entry hall.

High ceilings, large windows, solid wood parquet floors, security entry door, storage, washer, dishwasher, microwave oven, central vacuum, alarm, video entry phone, satellite and Internet connection; barbecue grill in the garden. No lift. Garage parking available at CZK 2000/month, easy parking on the street. Deposit for common building charges and utilities CZK 4000 per month.



* Area of the unit according to the Civil Code. The area consists of the sum total area of the entire unit bounded by perimeter walls.



Apartment Two-bedroom (3+1)

Rented

165 m², Prague 8, Libeň, Pomezni

