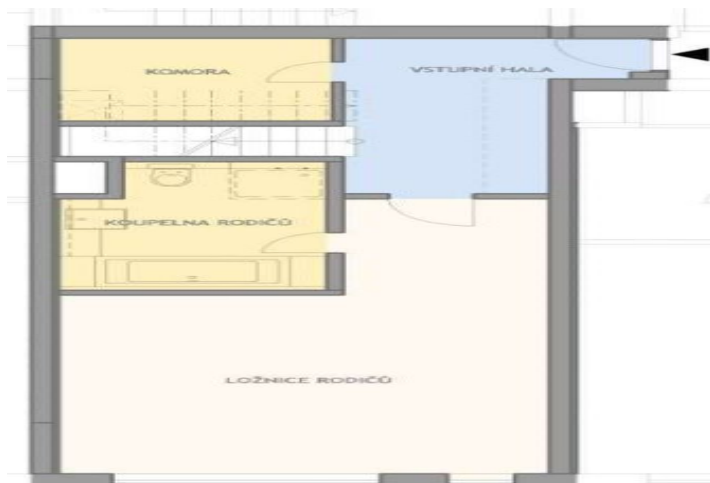
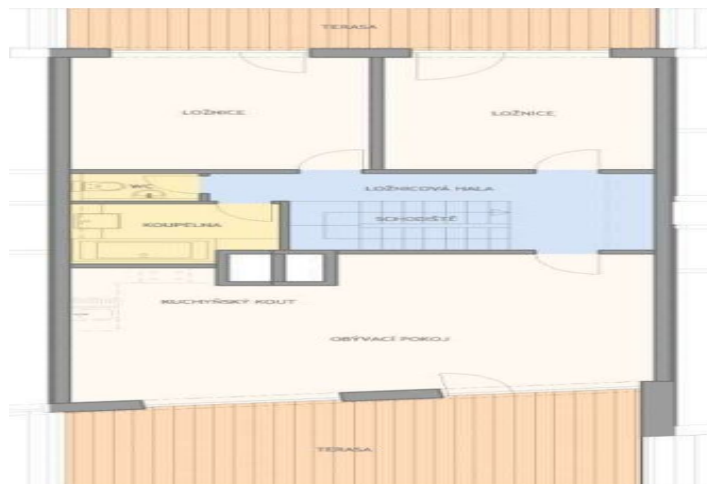




Apartment Three-bedroom (4+kk)

€ 559 571 | CZK 13 827 000

144 m², Prague 8, Karlín, Rohanské nabřeží





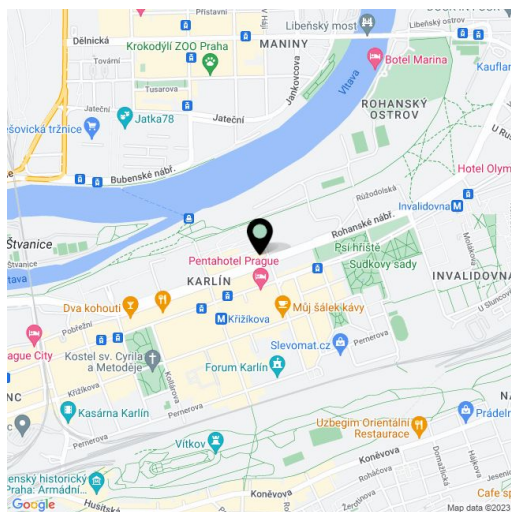
Apartment Three-bedroom (4+kk)

€ 559 571 | CZK 13 827 000

144 m², Prague 8, Karlín, Rohanské nabřeží

Total area	144 m ²
Parking	Underground parking.
Cellar	-
PENB	G
Reference number	11720

Modern and bright, three-bedroom, two-bath, 6th floor duplex features high ceilings, double-height windows and two terraces (37,5 sq.m) with panoramic views. Located on the river in the center of Prague in one of the most dynamically developing districts, Karlín, and a 2 minute walk to the nearest tennis court or fitness club. With the distinctive design concept of the award-winning architects Safer, Hajek, and Associates, this residential development is truly unique. Creative interiors by the renowned designer Barbora Skorpilova feature quality materials, flooring, designer bathroom equipment, and offer a wide choice of custom made kitchens. Building amenities include a 24-hour bilingual reception desk, delightful shops, a café with patio bar on ground floor, a Japanese-style courtyard garden, and secure underground parking. Additional services such as laundry and cleaning are also available on request. The price includes private cellar and 2 garage parking. The price is subject to VAT



* Area of the unit according to the Civil Code. The area consists of the sum total area of the entire unit bounded by perimeter walls.