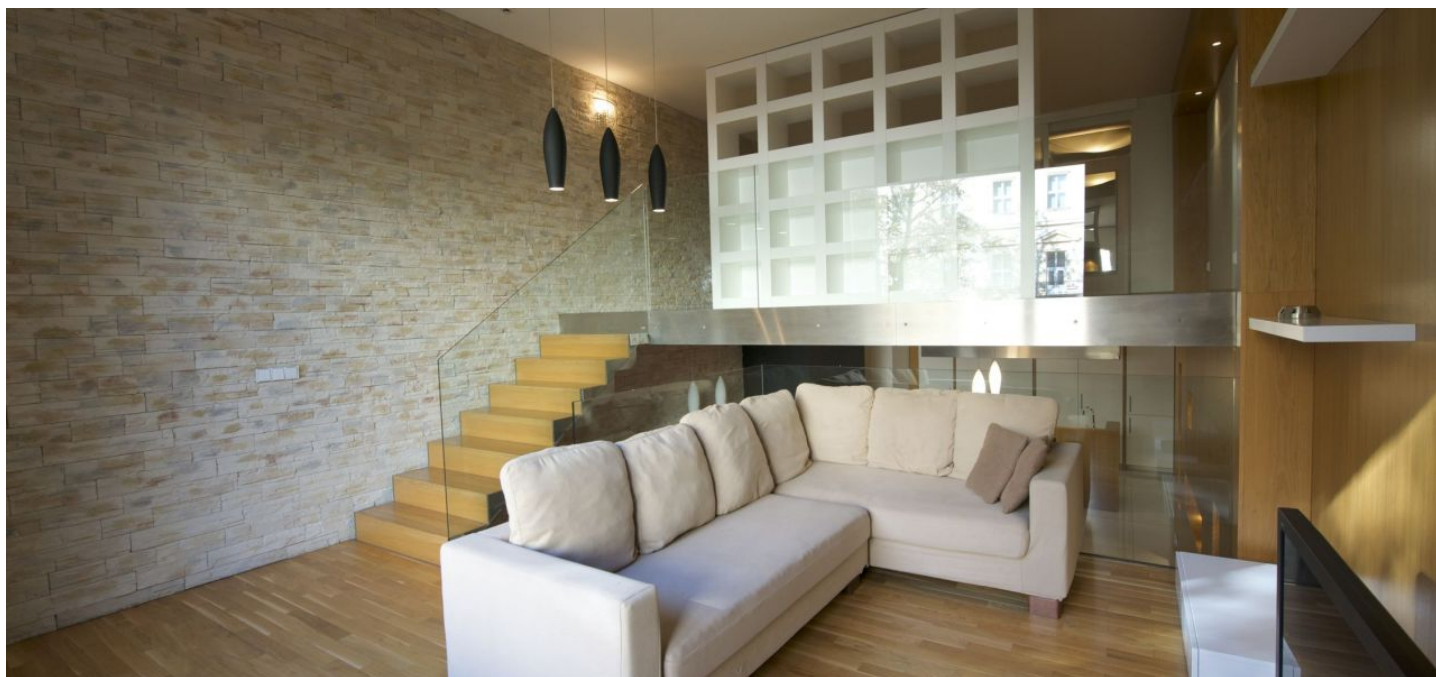




Apartment One-bedroom (2+kk)

Rented

103 m², Praha 1, Nové Město, Senovážné náměstí





Apartment One-bedroom (2+kk)

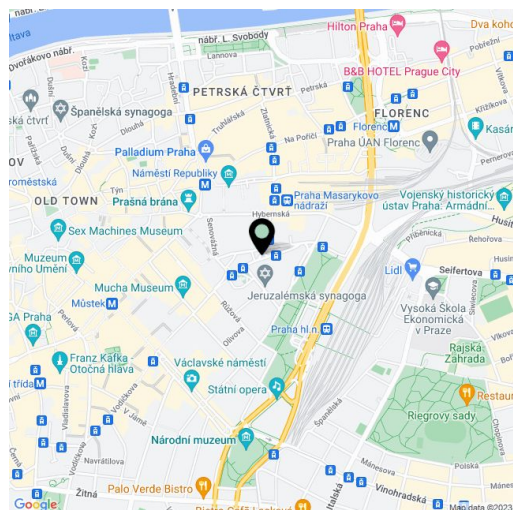
Rented103 m², Praha 1, Nové Město, Senovážné náměstí

Total area	103 m ²
Parking	Garage parking available at CZK 3500/month.
Garage	Yes
Cellar	-
PENB	G
Reference number	11756
Available from	Immediately

Centrally located rental in Prague. Fully furnished 1-bedroom split-level loft style flat situated on the ground floor of a completely restored 19th-century neoclassical palace with reception, security and parking. Conveniently located just a few minute walk from Wenceslas Square, and within walking distance of the Old Town Square.

The ground floor level includes an open dining room with a fully fitted kitchen, walk-in closet, guest toilet, and entry hall. There is living room with a large window oriented towards a beautifully landscaped Kempinski garden, on the next level. The bedroom with a walk-in closet and bathroom (tub, bidet, toilet) are situated on the upper level.

Parquet and tile floors, floor heating in the bathroom and toilet, built-in storage, security door, washing machine, dryer, dishwasher, TV, video entry phone. Deposit for common building charges and utilities CZK 5000/month.



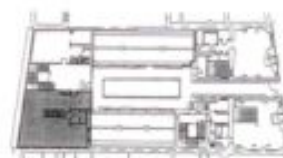
* Area of the unit according to the Civil Code. The area consists of the sum total area of the entire unit bounded by perimeter walls.



Apartment One-bedroom (2+kk)

Rented

103 m², Praha 1, Nové Město, Senovážné náměstí



1. PODLAŽÍ		1st FLOOR	
01	STUDIO	m ²	STUDIO
02	ŠATNA	m ²	WARDROBE
03	KOUPELNA	m ²	BATHROOM
04	WC	m ²	TOILET
05	SCHODIŠTĚ	m ²	STAIRWAY
06	KOMORA	m ²	STORAGE
GALERIE		GALLERY	
07	GALERIE	m ²	GALLERY
08	GALERIE	m ²	GALLERY
09	KOUPELNA	m ²	BATHROOM
10	WC	m ²	TOILET
CELKOVĚ VNITŘNÍ PROSTORY		m ²	INSIDE SPACE TOTAL