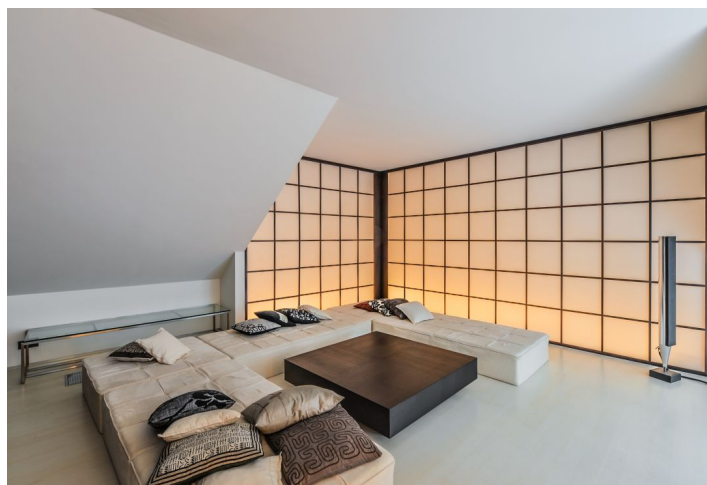
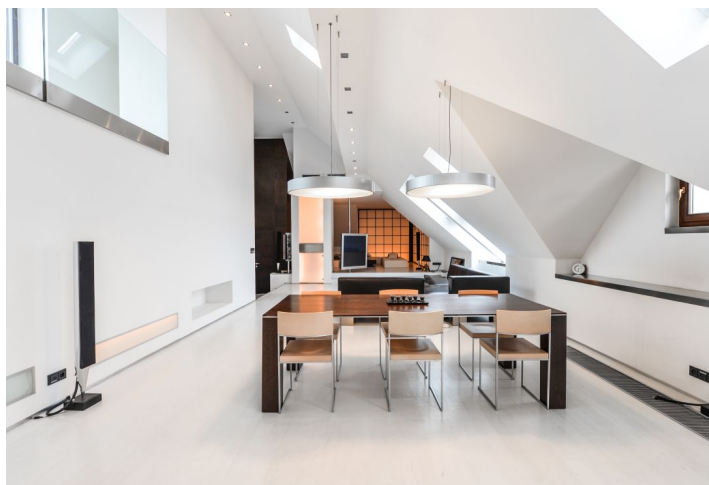
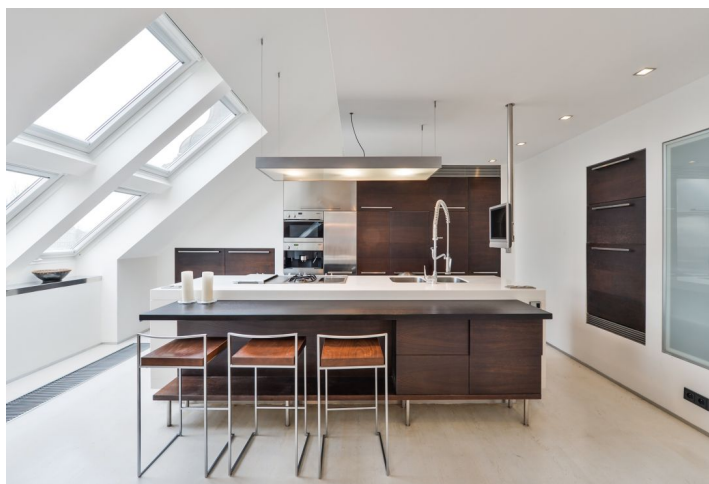




## Apartment Five-bedroom (6+1)

Rented

400 m<sup>2</sup>, Prague 5, Smíchov, Janáčkovo nábřeží





## Apartment Five-bedroom (6+1)

Rented

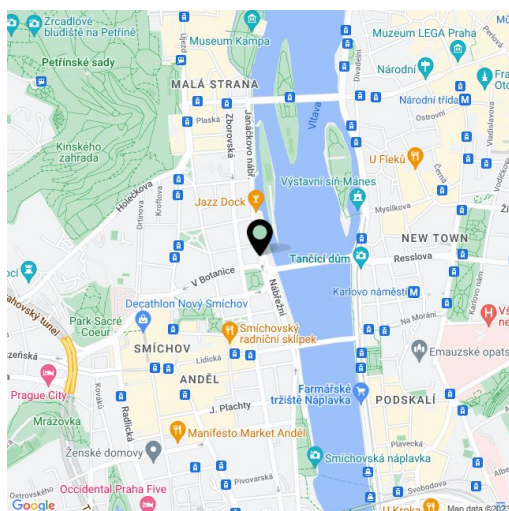
400 m<sup>2</sup>, Prague 5, Smíchov, Janáčkovo nábřeží

Total area	420 m <sup>2</sup>
Floor area*	400 m <sup>2</sup>
Terrace	20 m <sup>2</sup>
Parking	Parking available in the courtyard of the opposite building.
Cellar	-
PENB	G
Reference number	12135
Available from	Immediately

Unique and designed in an elegant fashion, this is a 5-bedroom 3-bathroom penthouse duplex with a terrace and a roof terrace offering panoramic views of Prague. Situated on the fifth top floor with lift in a meticulously refurbished traditional building with 24-hour reception right on the Vltava riverbank, within walking distance of the Anděl metro station and shopping zone, and with easy access to the city center. Building amenities include security cameras, sauna, fitness, Jacuzzi and a common winter garden.

This lovely flat has a calm and serene atmosphere. The main living space is located on the entry level comprising an open living room, dining space and a fully fitted kitchen plus a special **Japanese style media viewing area**. Also on this level are four bedrooms, one with an en-suite shower bathroom, a large full bathroom, guest toilet, a spacious closet in the entrance hall, and laundry room. The bedrooms are generously sized and feature fitted **walk-in closets**. The second level has an **entertainment area with a bar** with a wine cooler, sink and ice machine, and opens to a lovely **terrace** with access to the **roof terrace** offering beautiful views. The second level also includes the fifth bedroom with a full en-suite bathroom, opening to the terrace.

Alarm, satellite reception, solid wood floors, tiles, built-in wardrobes and storage, air-conditioning, central switch, washer, dryer, Gaggenau and Miele kitchen appliances, dumbwaiter, TVs. **Parking** and common building charges are included in the rent. Electricity, water and gas will be transferred to the tenant.



\* Area of the unit according to the Civil Code. The area consists of the sum total area of the entire unit bounded by perimeter walls.





# Apartment Five-bedroom (6+1)

400 m<sup>2</sup>, Prague 5, Smíchov, Janáčkovo nábřeží

Rented

