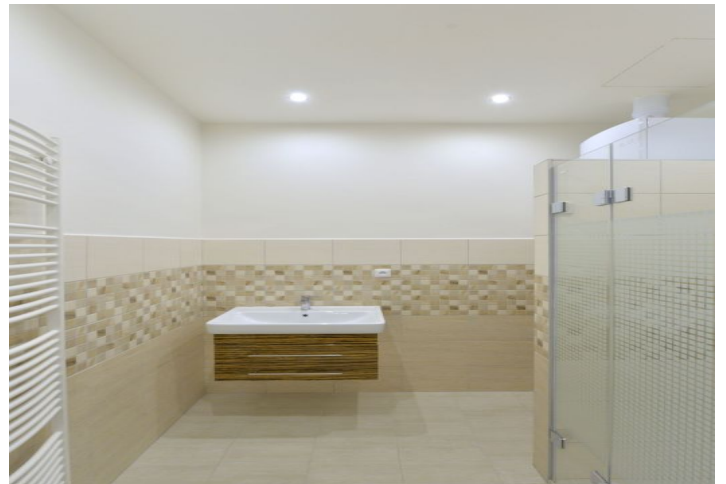




Apartment Two-bedroom (3+kk)

Rented

93 m², Prague 6, Bubeneč, Národní obrany





Apartment Two-bedroom (3+kk)

Rented

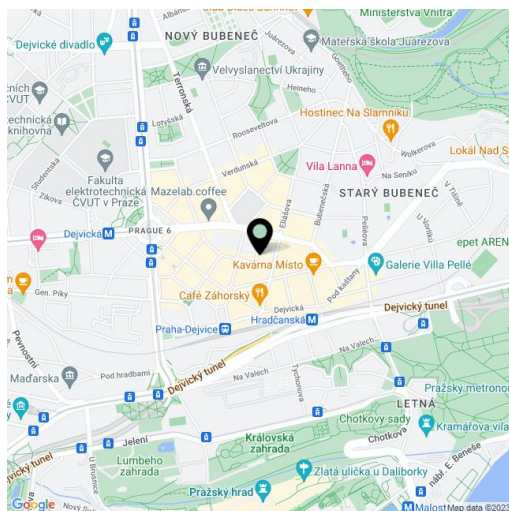
93 m², Prague 6, Bubeneč, Národní obrany

Total area	93 m ²
Parking	-
Cellar	Yes
PENB	G
Reference number	12505
Available from	Immediately

Newly completely reconstructed 2-bedroom flat with preserved original details on the fourth floor of a renovated building with a lift. Located in the popular embassy area of Bubeneč with full amenities, moments from Dejvická metro station and bus and tram links. Within easy reach of Stromovka and Letenské Sady Parks as well as the Prague Castle, convenient to the airport and the international schools ISP, Park Lane and Riverside School.

The interior features a spacious central entry hall, living room with a fully fitted open kitchen, and two bedrooms - one has a small storage room and an adjacent study or walk-in closet. There is shower bathroom, toilet, and storage room.

Oak parquet floors, tiles, floating floors, security entry door, gas boiler, dishwasher, microwave oven, audio entry phone, cellar. Common building charges CZK 800/person/month. Utilities are billed separately.



* Area of the unit according to the Civil Code. The area consists of the sum total area of the entire unit bounded by perimeter walls.