



## Apartment Five-bedroom (6+1)

Rented

250 m<sup>2</sup>, Prague 2, Vinohrady, Ibsenova





## Apartment Five-bedroom (6+1)

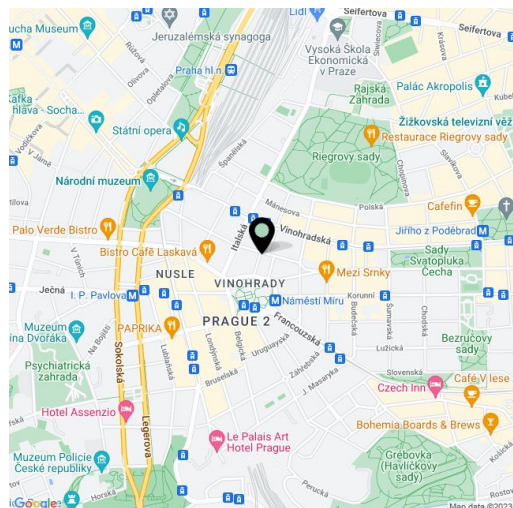
**Rented**250 m<sup>2</sup>, Prague 2, Vinohrady, Ibsenova

Total area	256 m <sup>2</sup>
Floor area*	250 m <sup>2</sup>
Balcony	6 m <sup>2</sup>
Parking	One underground garage space included.
Garage	Yes
Cellar	-
PENB	G
Reference number	12603
Available from	Immediately

**Impressive 4th floor 4-bedroom 3-bathroom corner flat with pretty views of Náměstí Míru Square and the dramatic theatre "Vinohradské divadlo" on one side and a lovely landscaped courtyard garden on the other. The building is one of the highest level and finely done restorations of an Art Nouveau building in Prague.**

The quality of the finishes in the apartment is superb including marble bathrooms, stone kitchen counters and Miele appliances. The flat offers generous rooms - living room, formal dining room, four bedrooms, three bathrooms, laundry room, an additional toilet, and two balconies.

High ceilings, large windows, and original nicely refinished woodwork and parquet floors accentuate the space. Washer, dryer, video entry phone, alarm. The building has a double security door at the building entrance and has been retrofitted with a lift that goes from the garage to the top floor with stops on each floor. One parking space included. Deposit for common building charges and utilities CZK 15,000/month.



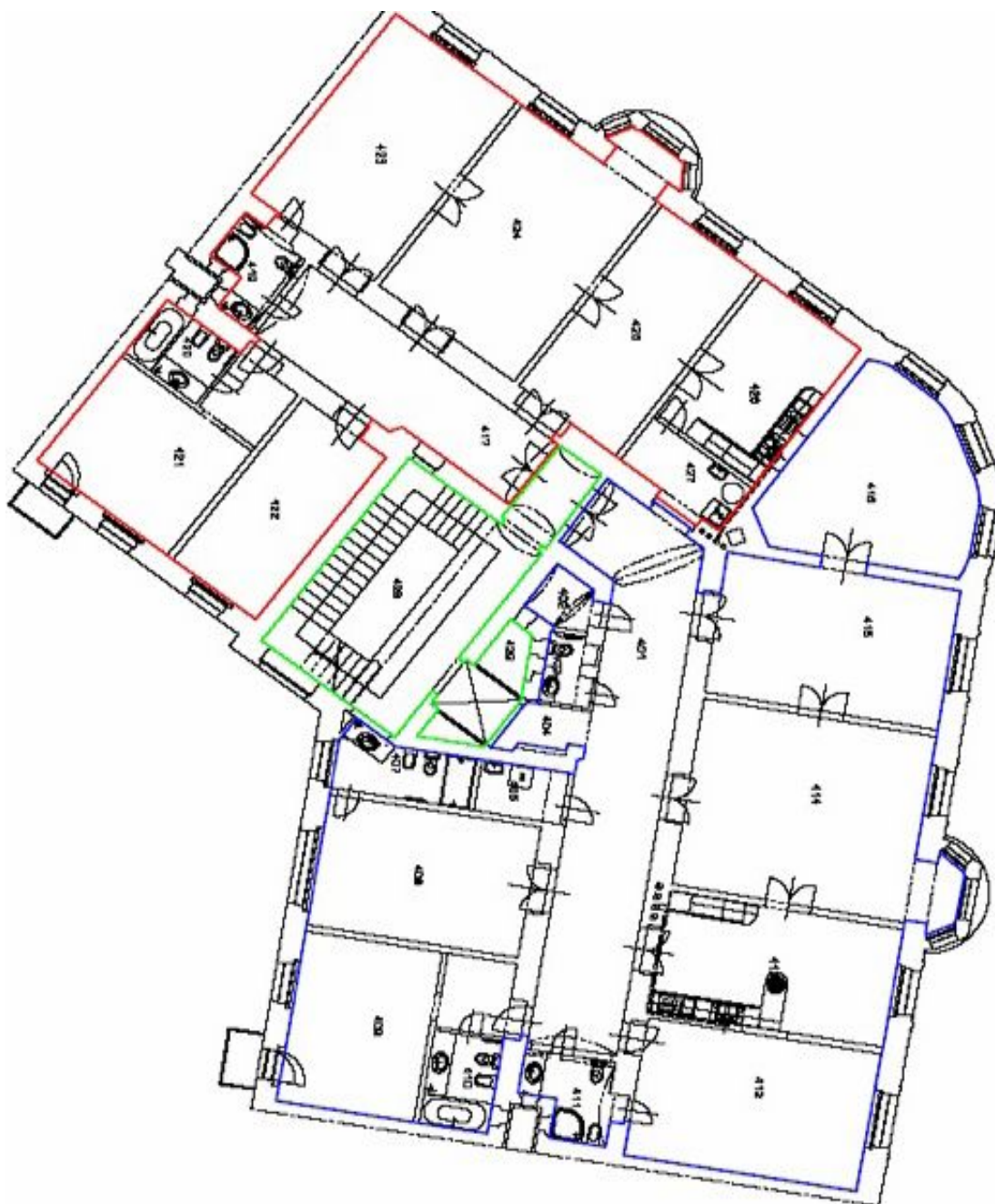
\* Area of the unit according to the Civil Code. The area consists of the sum total area of the entire unit bounded by perimeter walls.



# Apartment Five-bedroom (6+1)

250 m<sup>2</sup>, Prague 2, Vinohrady, Ibsenova

Rented



PODLAŽÍ: 4.NP

LEGENDA		LEGENDA		LEGENDA	
BARVA	POUŽITÍ	BARVA	POUŽITÍ	BARVA	POUŽITÍ
Červená	Bytová jednotka 412	Červená	Bytová jednotka 413	Červená	Bytová jednotka 414
Modrá	Bytová jednotka 415	Modrá	Bytová jednotka 416	Modrá	Bytová jednotka 417
Zelená	Bytová jednotka 418	Zelená	Bytová jednotka 419	Zelená	Bytová jednotka 420