



## House Seven-bedroom (8+1)

Rented

730 m<sup>2</sup>, Prague 6, Nebušice, Dubová





## House Seven-bedroom (8+1)

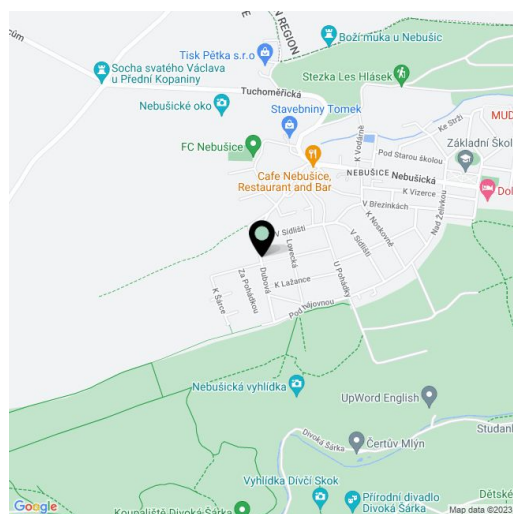
**Rented**730 m<sup>2</sup>, Prague 6, Nebušice, Dubová

Usable area	730 m <sup>2</sup>
Plot	1180 m <sup>2</sup>
Foot print	345 m <sup>2</sup>
Garden	835 m <sup>2</sup>
Floor area	660 m <sup>2</sup>
Terrace	70 m <sup>2</sup>
Parking	Garage for three cars.
Garage	Yes
Cellar	Yes
PENB	G
Reference number	12638
Available from	Immediately

Early 1990's spacious 7-bedroom 2-bathroom free standing house with an outside pool, nicely maintained 1200 m<sup>2</sup> garden and a 70 m<sup>2</sup> tiled terrace. Located in an attractive green Prague 6 residential neighborhood within easy reach of the ISP international school and a large park/woods. Quick access to the city center, convenient to the airport and more international schools in Prague 6.

Ground floor: bright living room with a fireplace and garden / terrace access, large fully fitted kitchen, formal dining room, dressing room, two bedrooms, bathroom with bathtub, shower and toilet (accessible from one bedroom and the corridor), guest toilet. Upstairs: five bedrooms, two of them with balcony, hall connected to the winter garden, guest toilet, bathroom with bathtub and toilet. Basement: garage for three cars, two cellars, a large tiled recreation room, large tiled laundry room, garden access.

Alarm with possibility to connect it to a security agency, telephone line, floating floors, tiles, French windows, built-in wardrobes, electric heating, security roller blinds in all windows, electric blinds on terrace door, security glass in basement windows, garage door and gate with remote control. The tenant pays for the utilities (electricity, water, sewage, gardening service, security agency) approx. CZK 10,000 per month.

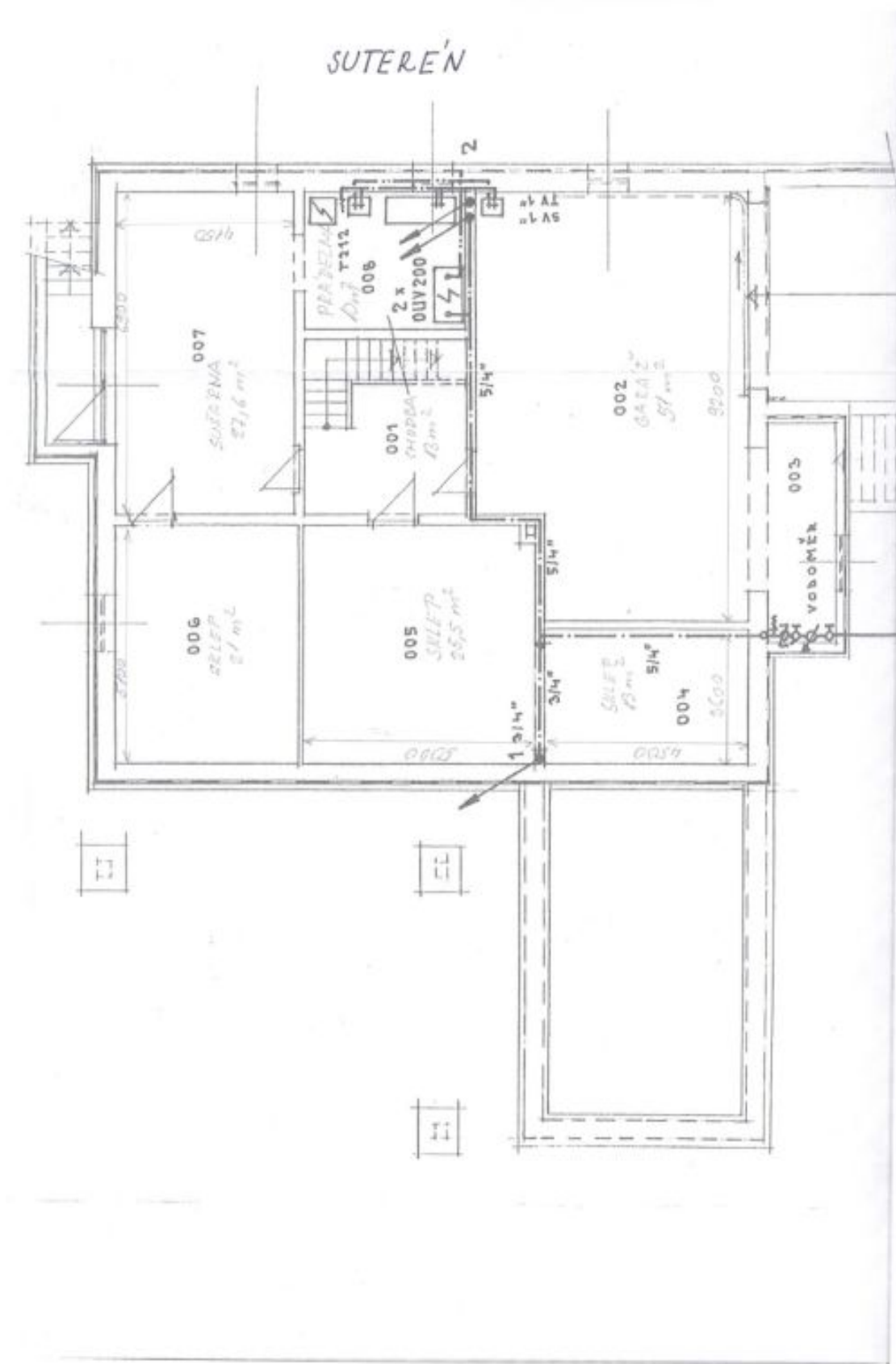




# House Seven-bedroom (8+1)

730 m<sup>2</sup>, Prague 6, Nebušice, Dubová

Rented

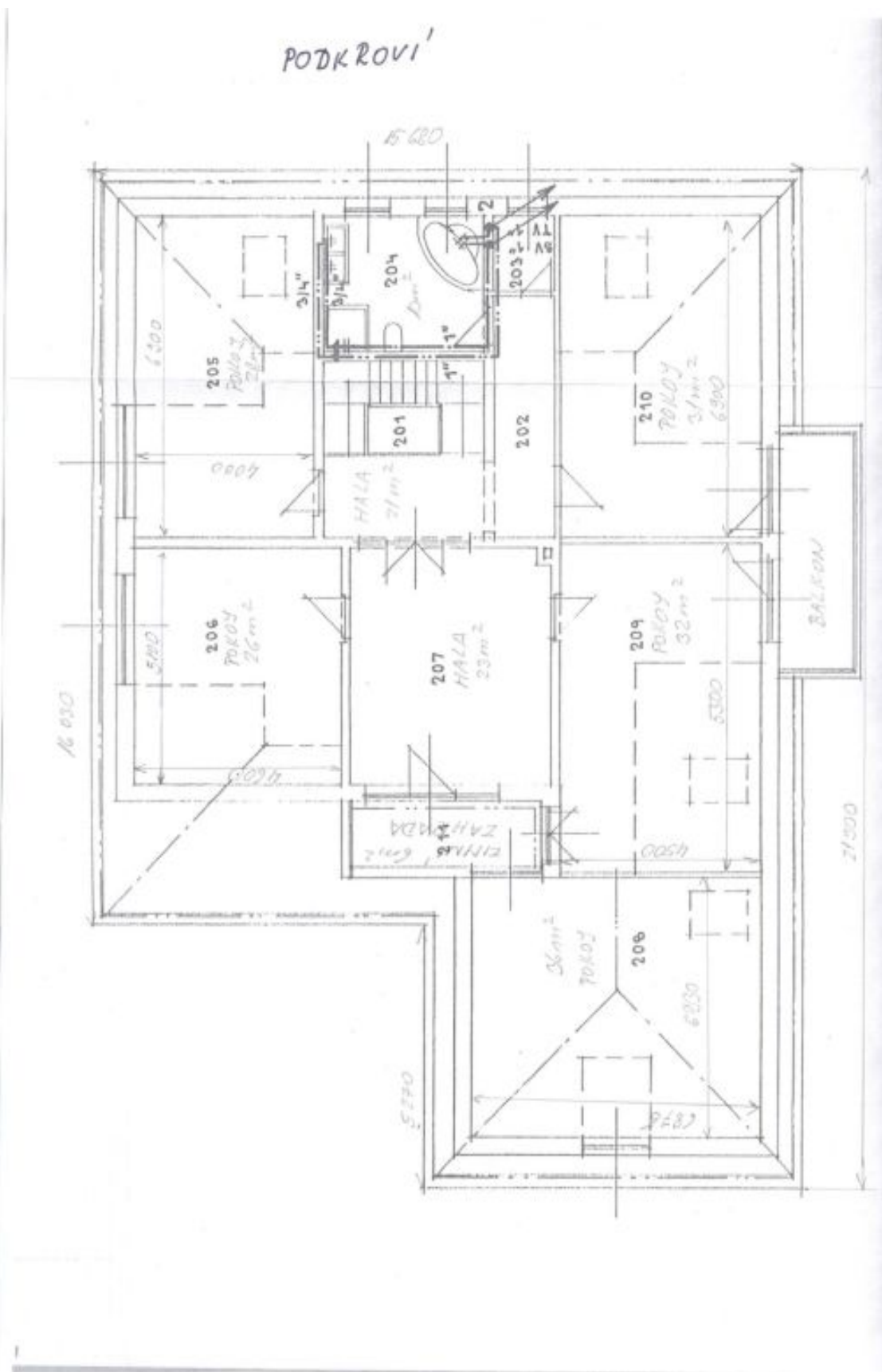




# House Seven-bedroom (8+1)

730 m<sup>2</sup>, Prague 6, Nebušice, Dubová

Rented





# House Seven-bedroom (8+1)

Rented

730 m<sup>2</sup>, Prague 6, Nebušice, Dubová

