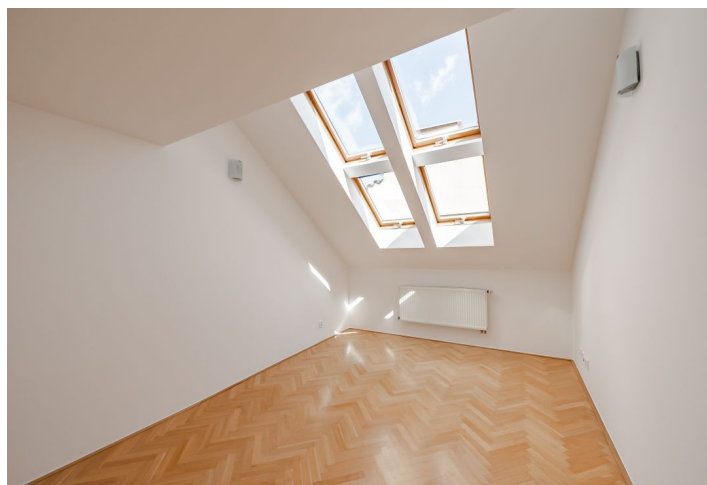
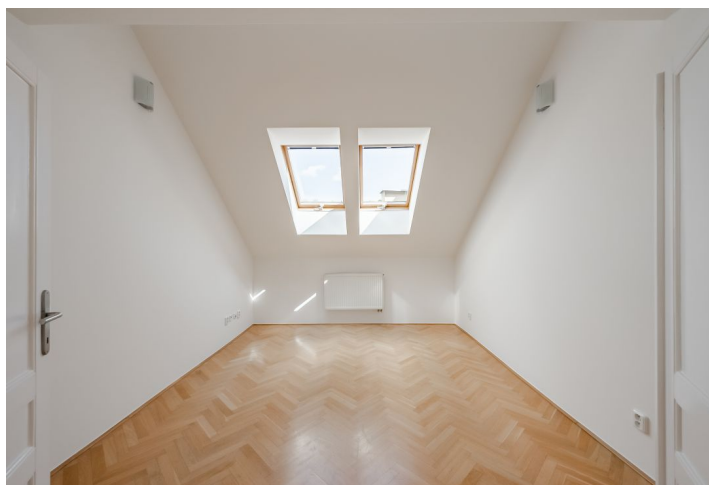
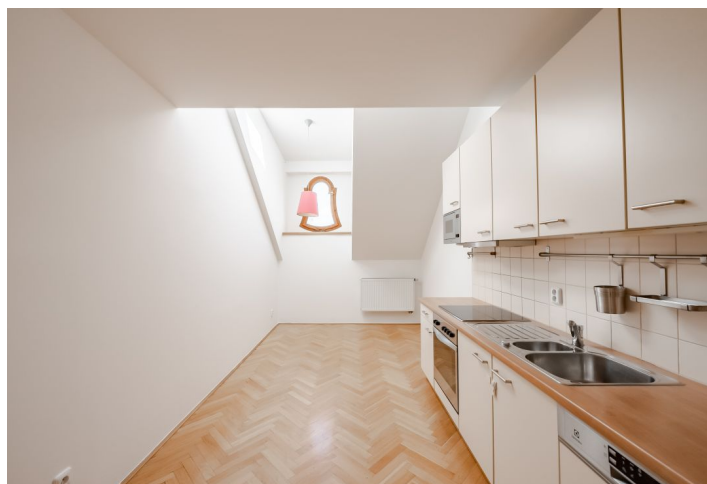




## Apartment Four-bedroom (5+1)

Rented

146 m<sup>2</sup>, Prague 7, Holešovice, Strossmayerovo náměstí





## Apartment Four-bedroom (5+1)

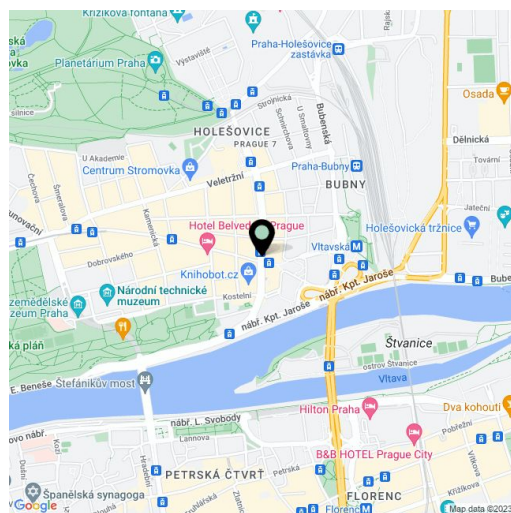
**Rented**146 m<sup>2</sup>, Prague 7, Holešovice, Strossmayerovo náměstí

Total area	156 m <sup>2</sup>
Floor area*	146 m <sup>2</sup>
Terrace	10 m <sup>2</sup>
Parking	Parking available.
Cellar	-
PENB	G
Reference number	12668
Available from	Immediately

**Reconstructed split-level attic flat with a terrace on 5th and 6th floors in a renovated building with lift convenient to all forms of public transportation with tram stops and the Vltavska metro station, line C, just 3 minutes away, and the Stromovka and Letenske Sady Parks nearby.**

The apartment has a living room with an access to the terrace, fully equipped kitchen, lobby with gallery, 4 bedrooms, 2 bathrooms with a bathtub, shower and bidet (one on each floor).

Other features include air conditioning, parquet floors, storage space, safety lock, dishwasher, washer, dryer, storage space, and cellar. Can be fully furnished on request. Deposit for common building charges CZK 1,000/person/month. Utilities will be transferred to the tenant's name. Available from August 16, 2021.



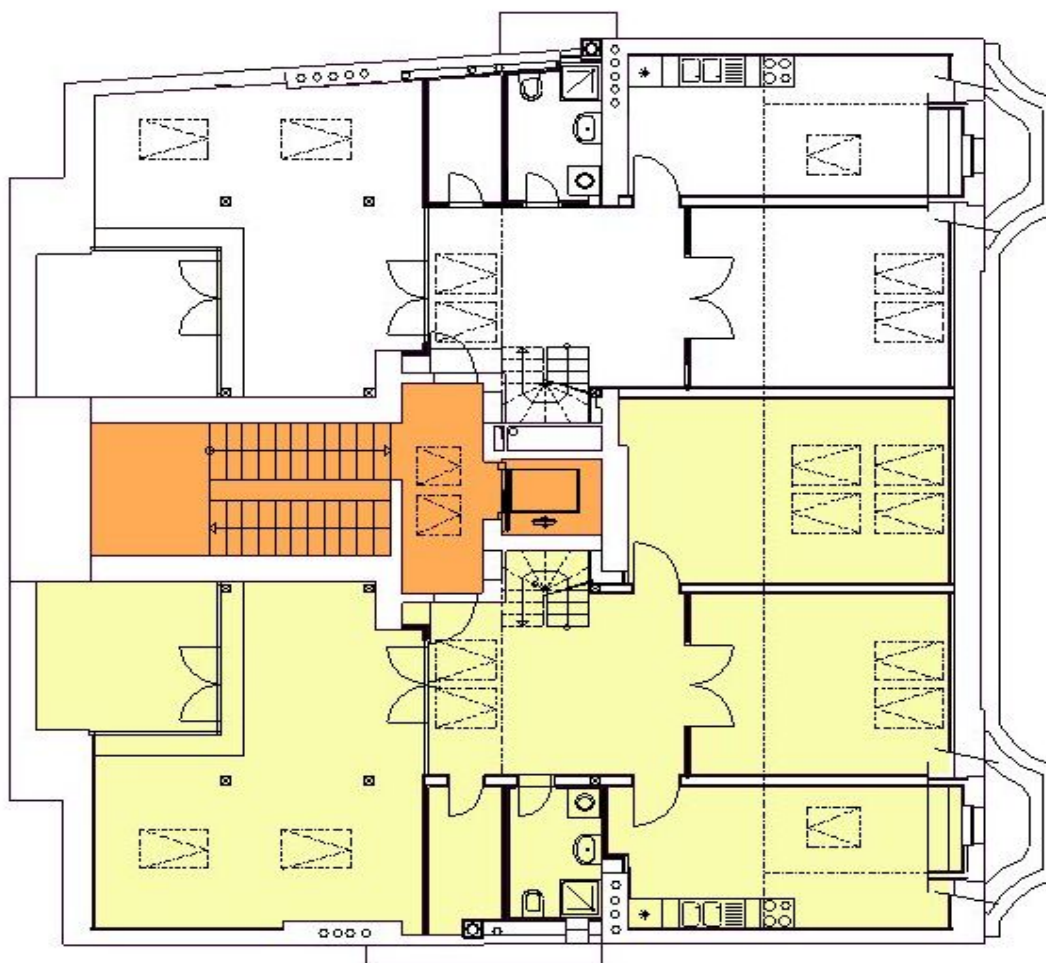
\* Area of the unit according to the Civil Code. The area consists of the sum total area of the entire unit bounded by perimeter walls.



## Apartment Four-bedroom (5+1)

146 m<sup>2</sup>, Prague 7, Holešovice, Strossmayerovo náměstí

Rented





## Apartment Four-bedroom (5+1)

146 m<sup>2</sup>, Prague 7, Holešovice, Strossmayerovo náměstí

**Rented**

