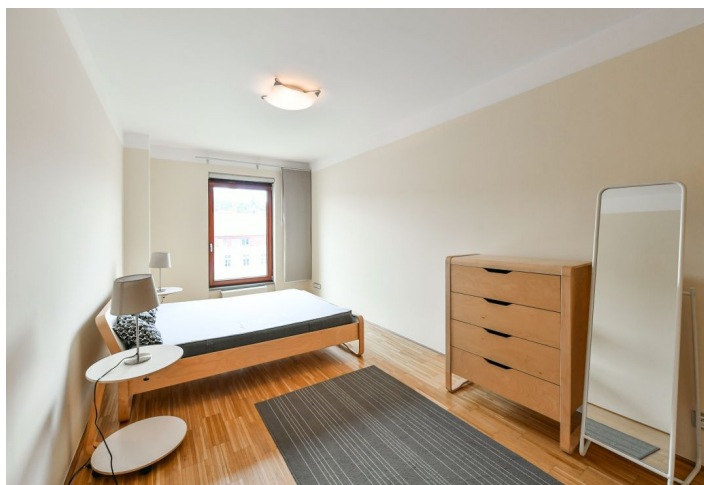
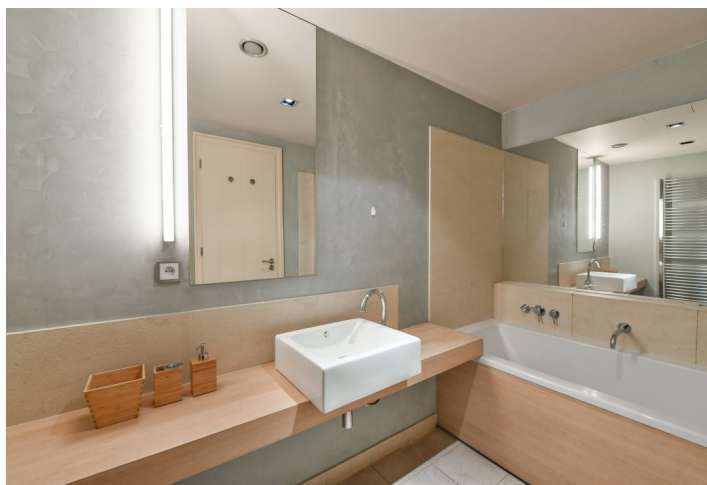




Apartment One-bedroom (2+kk)

Rented

75 m², Praha 8, Karlín, Rohanské nábřeží





Apartment One-bedroom (2+kk)

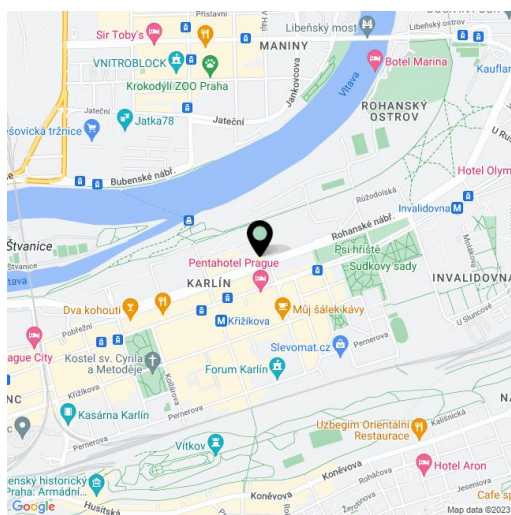
Rented75 m², Praha 8, Karlín, Rohanské nábřeží

Total area	75 m ²
Parking	Parking space in underground garages included.
Garage	Yes
Cellar	-
PENB	G
Reference number	13104
Available from	Immediately

Modern furnished 6th floor 1-bedroom riverside flat in the River Diamond residential complex on the Prague 1 - Prague 8 border, in one of the most dynamically developing districts, just a 5 minute walk to the city center.

Offering great design and a modern lifestyle, the apartment has a fully fitted kitchen open to the living room, bathroom with bathtub, separate toilet, and laundry room.

Hardwood floors, security door, washer, dryer, dishwasher, microwave, LCD TV, home cinema, UPC cable connection for TV and the Internet, audio entry phone. Building amenities include 24-hour reception and security, Japanese-style courtyard garden, and secure underground parking. Deposit for common building charges, utilities and internet CZK 6000 per month.



* Area of the unit according to the Civil Code. The area consists of the sum total area of the entire unit bounded by perimeter walls.