



House Four-bedroom (5+1)

€ 2 352 | CZK 59 000

262 m², Prague 5, Stodůlky, Jindrova





House Four-bedroom (5+1)

€ 2 352 | CZK 59 000

262 m², Prague 5, Stodůlky, Jindrova

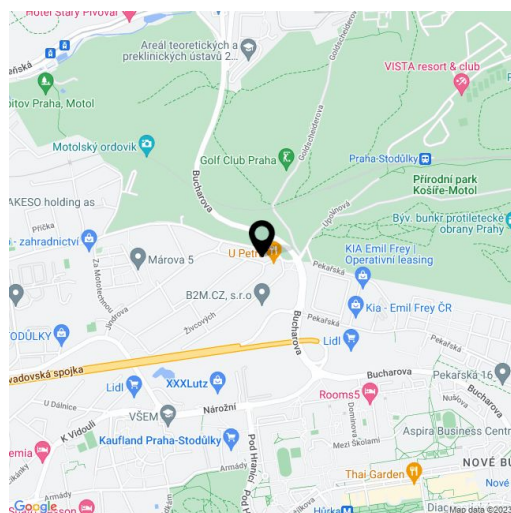
Plot	400 m ²
Garden	230 m ²
Parking	Heated double garage + parking on the plot.
Garage	Yes
Cellar	Yes
Service price	Utilities approx. CZK 11,000/month.
PENB	G
Reference number	13126
Available from	Immediately

Comfortable semi-detached house with a winter garden and a landscaped outdoor garden with a pergola, located in a quiet and green residential neighborhood in Stodůlky, Prague 5.

Convenient to the Nové Butovice metro station (line B), shopping, and the German and Japanese International Schools. A bus stop is located only a few minutes' walk from the house. Quick access to the airport.

The ground floor consists of a lounge with a fireplace, a living room with a dining area and a fully fitted open plan kitchen plus access to the winter garden, a shower bathroom with a toilet, a pantry, and an entry hall. The first floor features a master bedroom with a balcony, a full en-suite bathroom, and a walk-in closet. There are two more bedrooms (each with a staircase leading up to an attic bedroom), a family bathroom (bathtub, walk-in shower, double sink, toilet), and a spacious hall. The basement floor includes a hall with a utility area, storage, access to the garden, and a garage.

Hardwood and tile floors, blinds, insect nets, gas heating, washer, dryer, dishwasher, microwave oven, alarm, security bars on the downstairs windows.

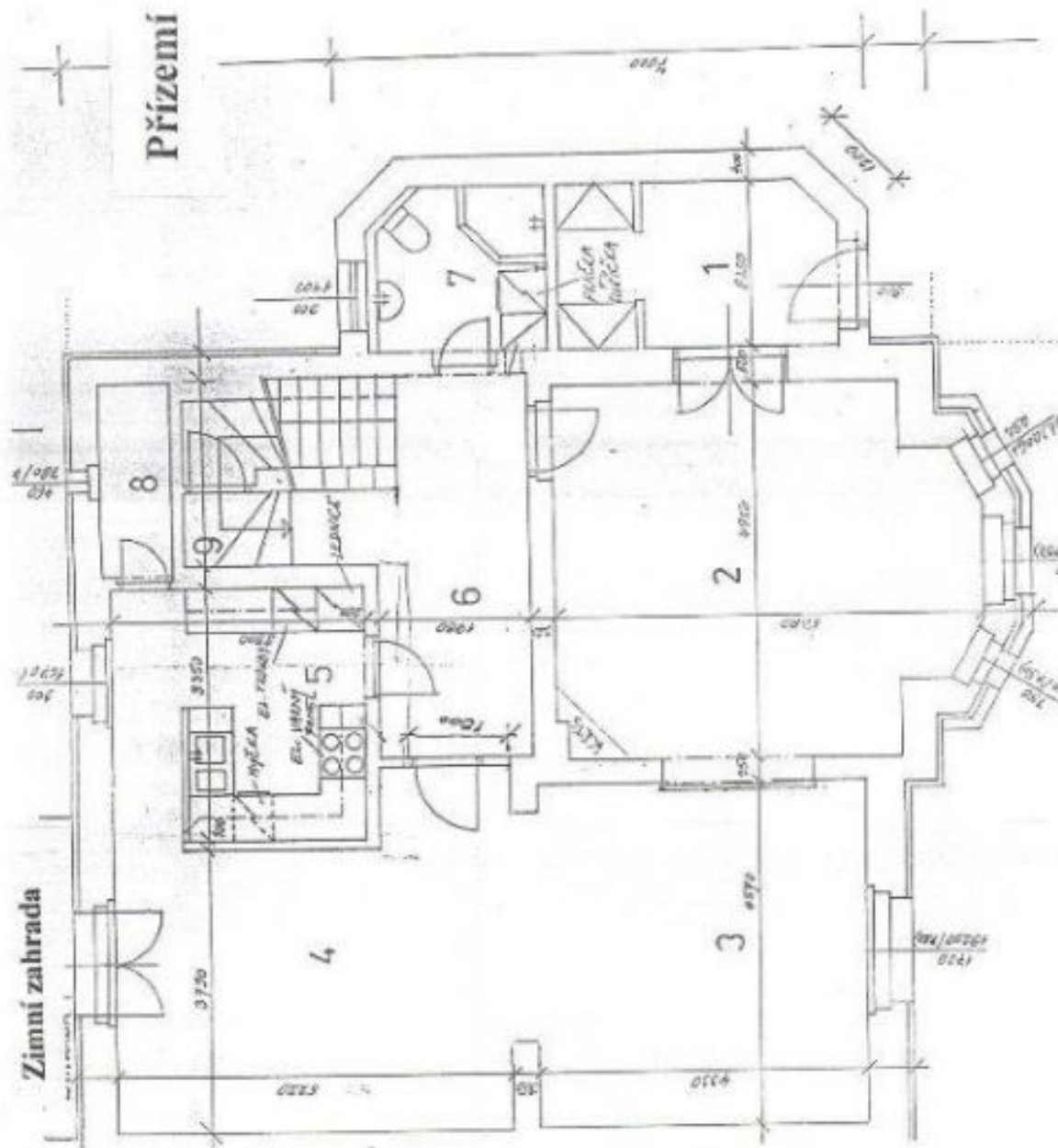




House Four-bedroom (5+1)

€ 2 352 | CZK 59 000

262 m², Prague 5, Stodůlky, Jindrova

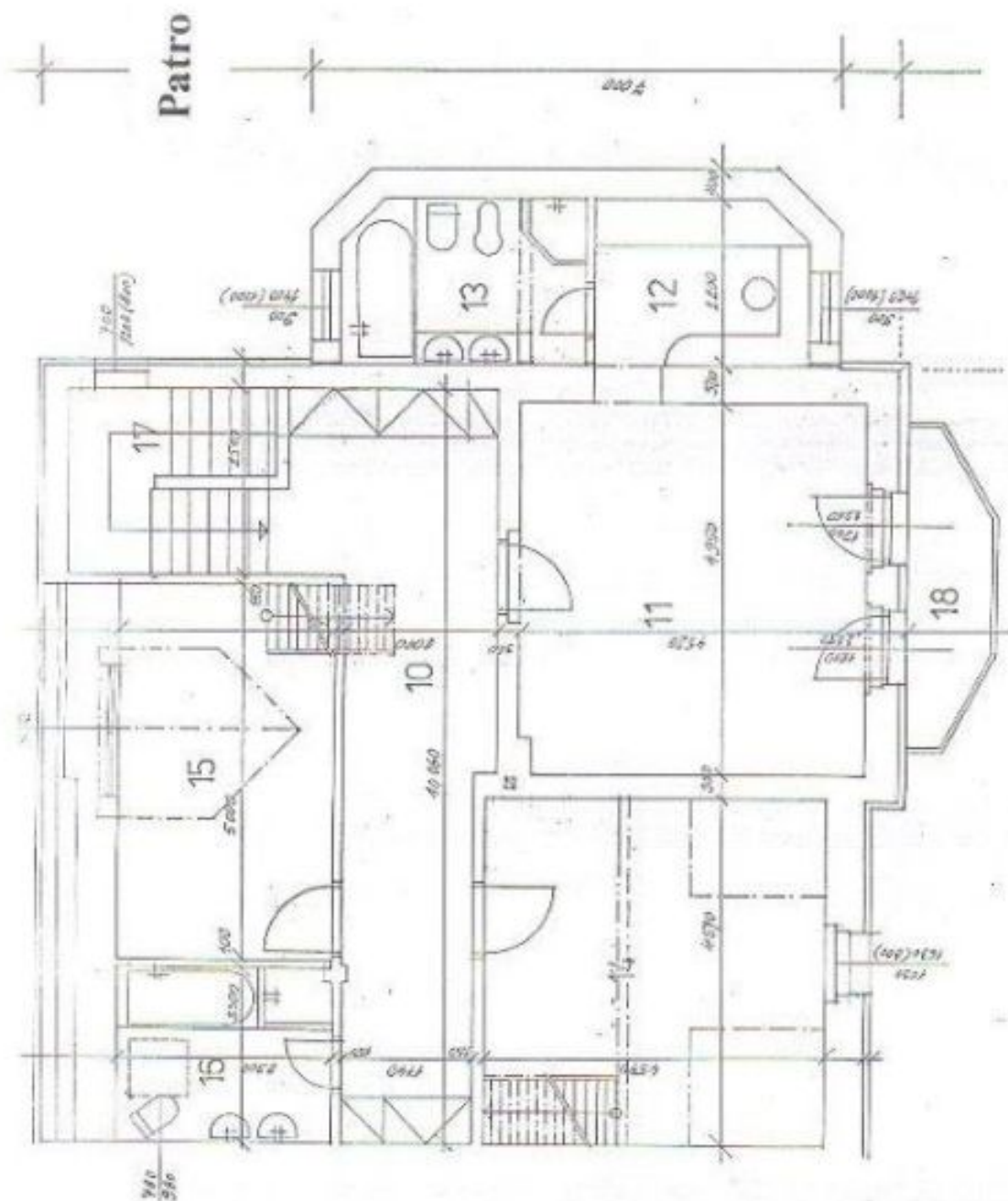




House Four-bedroom (5+1)

€ 2 352 | CZK 59 000

262 m², Prague 5, Stodůlky, Jindrova





House Four-bedroom (5+1)

€ 2 352 | CZK 59 000

262 m², Prague 5, Stodůlky, Jindrova

