



Apartment Three-bedroom (4+kk)

€ 776 103 | CZK 19 421 984

139.3 m², Prague 5, Smíchov, Mosnova



BYT Č.7

kategorie bytu

4 + KK

podlaží

3.np-4.NP

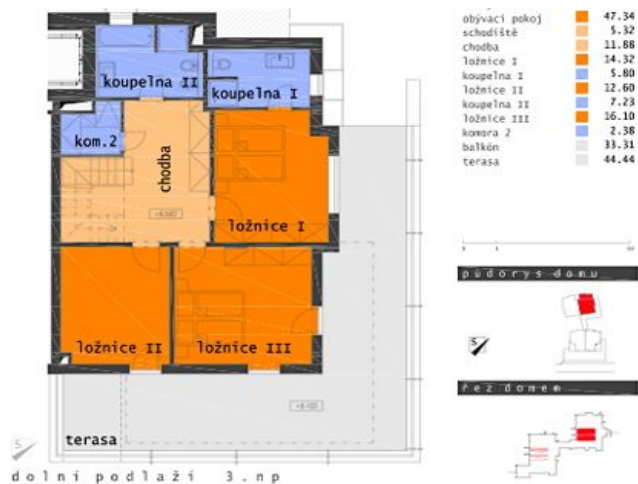
plocha bytu m²

hrubá podlažní plocha 150.51

čistá podlažní plocha 140.27

plocha balkónu/terasy 77.75

místnosti





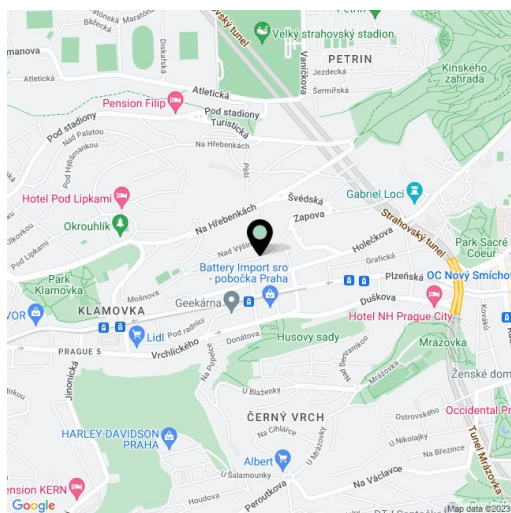
Apartment Three-bedroom (4+kk)

€ 776 103 | CZK 19 421 984

139.3 m², Prague 5, Smíchov, Mosnova

Total area	217 m²
Floor area*	139 m²
Balcony	78 m²
Parking	Yes
Cellar	-
PENB	G
Reference number	13253

New contemporary residence located in one of the highly sought after residential areas, Hřebenký, within easy reach of the Anděl commercial district, the popular Ladronka Park and the Kinského Garden; a 10 minute drive to the city center. The residence is formed by two interconnected villas situated on a steep hill with a beautifully landscaped mature garden and a gorgeous panoramic view of Prague. The villas present 8 apartments, 11 parking spaces and 9 cellars. This duplex situated on the 2nd and 3rd floors of the upper villa offers an open space living and kitchen area with French windows and a terrace. It further has 3 bedrooms (each bedroom with direct access to a terrace), 2 bathrooms, extra WC and 2 storage rooms. The equipment includes Internet and satellite TV connections in all main rooms, video intercom and outside roller blinds with a wind sensor. The apartment is prepared for wireless alarm system, and the last two floors will include air-conditioning as part of standard equipment. Apartment 140,2 m², terrace 77,7 m². The purchase price includes 1 parking space and a cellar (5 m²) and



* Area of the unit according to the Civil Code. The area consists of the sum total area of the entire unit bounded by perimeter walls.