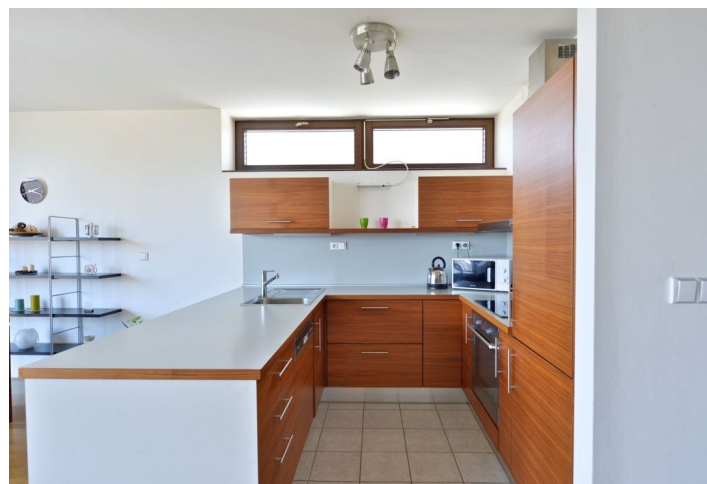




## Apartment Three-bedroom (4+kk)

Rented

109 m<sup>2</sup>, Prague 6, Vokovice, Nobelova





## Apartment Three-bedroom (4+kk)

Rented

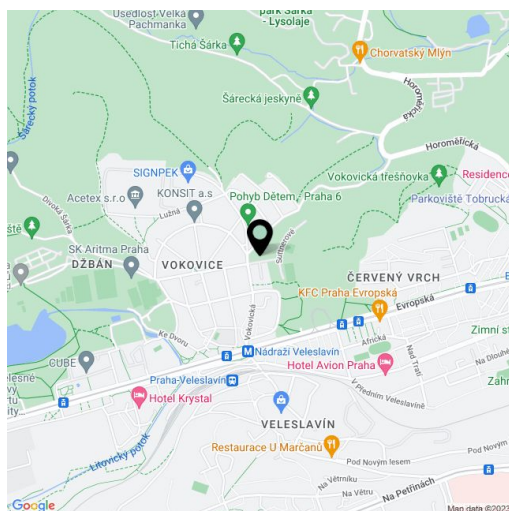
109 m<sup>2</sup>, Prague 6, Vokovice, Nobelova

Total area	117 m <sup>2</sup>
Floor area*	109 m <sup>2</sup>
Loggia	8 m <sup>2</sup>
Parking	One garage parking space included in the rent.
Cellar	Yes
PENB	G
Reference number	13331
Available from	Immediately

Modern furnished 3-bedroom 2-bathroom flat with a balcony on the 2nd floor of a apartment complex with lift, just a 3-minute drive from the International School of Prague in Nebušice, 2-minute walk to the trams on Evropska and the Nadrazi Veleslavin metro station, and a 10-minute drive to the airport.

Full size open-plan built-in kitchen open to a spacious living and dining room, 3 bedrooms, 2 bathrooms, and an entry hall.

Hardwood floors, nice terrace and lovely views of Sarka Valley. Tennis courts and fitness within the development. Cellar. Common building charges and deposit for utilities CZK 8,000. Available from November 2019.



\* Area of the unit according to the Civil Code. The area consists of the sum total area of the entire unit bounded by perimeter walls.