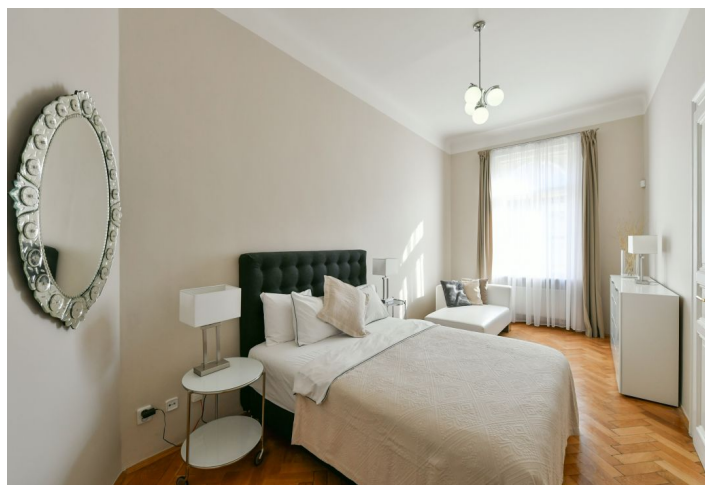
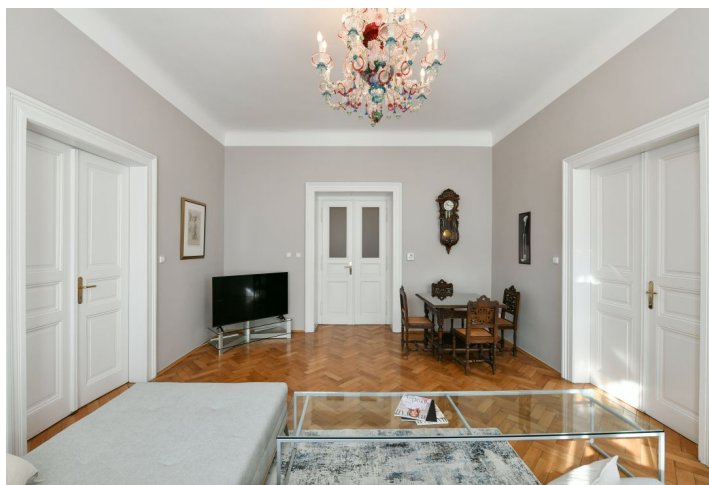
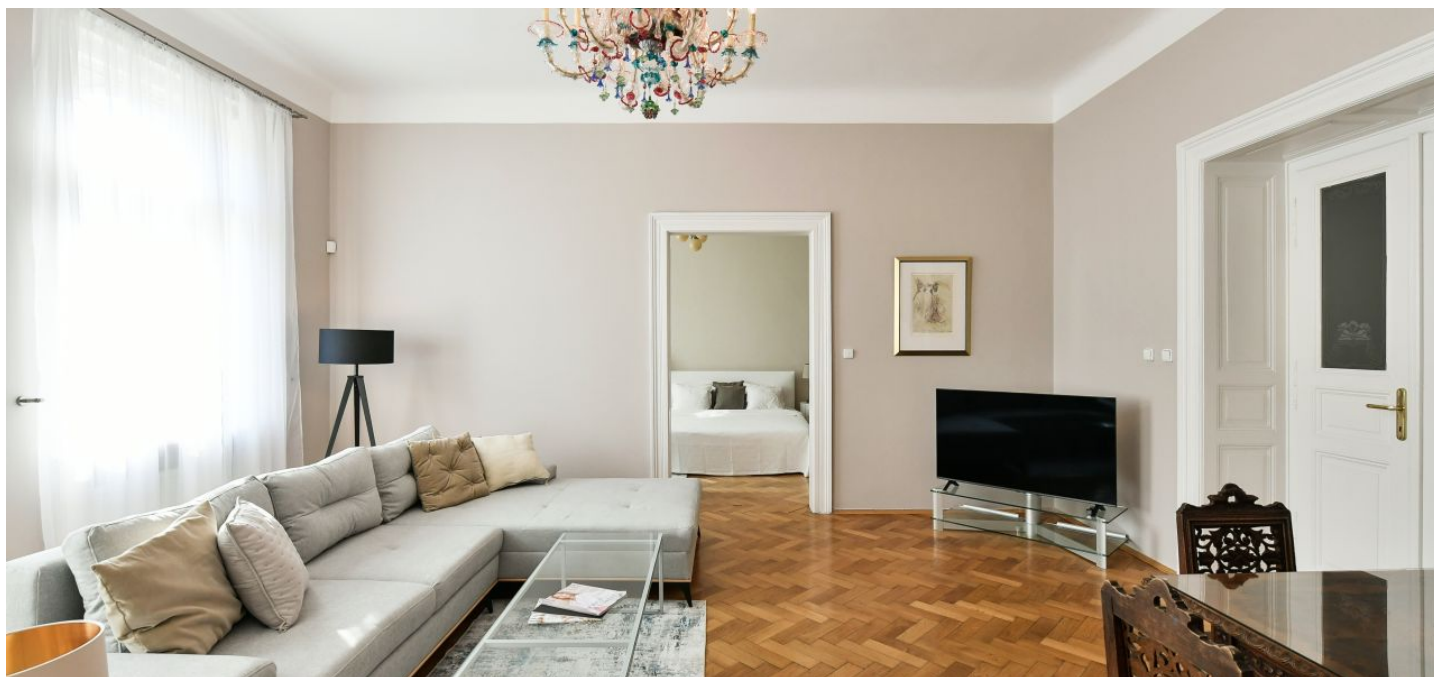




Apartment Two-bedroom (3+1)

Rented

120 m², Prague 1, Staré Město, Veleslavínova





Apartment Two-bedroom (3+1)

Rented

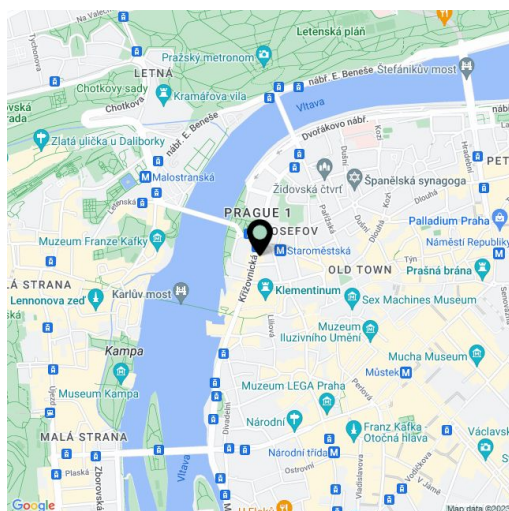
120 m², Prague 1, Staré Město, Veleslavínova

Total area	120 m ²
Parking	-
Cellar	-
Service price	Deposit for common services and utilities CZK 7,000/month.
PENB	E
Reference number	13365
Available from	Immediately

This fully furnished apartment on the 4th floor of a renovated Art Nouveau building with an elevator and a grand entrance is beautifully centrally located mere steps from Old Town Square and Charles Bridge, a few steps from the Staroměstská metro station.

The interior includes a large hallway, a fully fitted and equipped eat-in kitchen, a laundry room with a washer and dryer, two utility rooms, a bathroom with a bathtub and walk-in shower, and a separate toilet. The two bedrooms are connected to the living room, one on each side, through double doors while also accessible from the hallway.

High ceilings, large windows, original **hardwood parquet floors**, tiles, etched glass door panels, heated floor in the toilet, gas heating, dishwasher, microwave oven, satellite connection, TV, ADSL, video entry phone, alarm. Cleaning and ironing can be arranged. Underground **parking** is available at an extra cost at the Rudolfinum public garages.



* Size of the unit according to the Housing Act.
The area consists of the sum total of the internal area of every room.