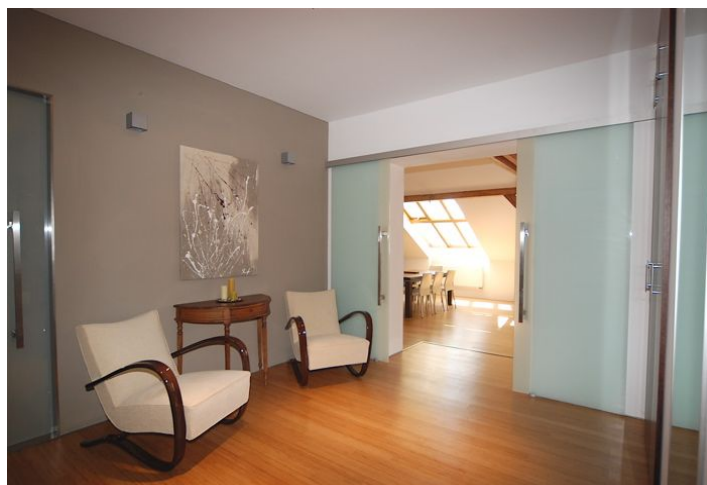
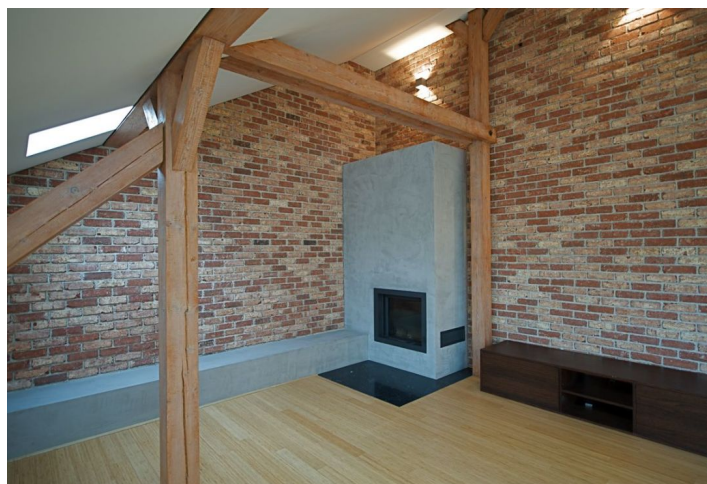




Apartment Four-bedroom (5+kk)

Rented

251 m², Praha 1, Staré Město, Platněřská





Apartment Four-bedroom (5+kk)

Rented

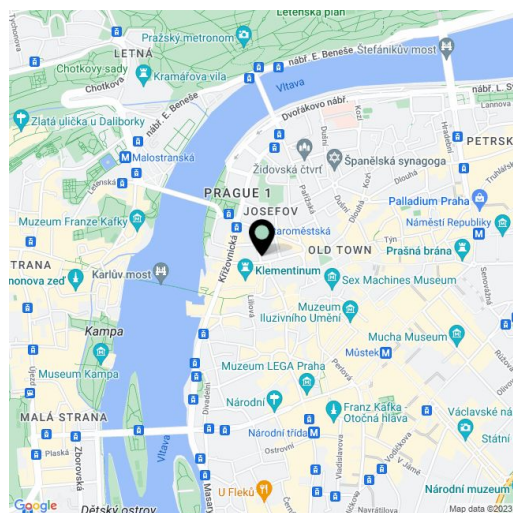
251 m², Praha 1, Staré Město, Platnéřská

Total area	289 m ²
Floor area*	251 m ²
Terrace	38 m ²
Parking	Parking in nearby garages at Rudolfinum or Intercontinental Hotel.
Cellar	-
PENB	G
Reference number	13435
Available from	Immediately

Top quality air-conditioned 4-bedroom 2-bathroom attic apartment with a 38 m² private roof terrace providing amazing 360 degree views of the city including the Prague Castle and Petřín Hill. Situated on the 5th floor of a renovated end of the 19th century building mere steps from the Old Town Square and Charles Bridge.

The flat has a fully fitted open plan kitchen, large living room with fireplace, three bedrooms, small fourth bedroom/study, and two bathrooms (one full, one with shower and WC). Up-to-date design and finishings, Siemens appliances and granite counter tops in kitchen, wooden beams and brick walls in living room, glass sliding doors throughout, bamboo flooring, and French windows in the bedrooms.

Other features include built-in wardrobes and storage, pantry, security door, video entry phone, and alarm system. Lift in the building. Condo fees and energy are paid separately by the tenant. Available August 1, 2016.



* Area of the unit according to the Civil Code. The area consists of the sum total area of the entire unit bounded by perimeter walls.